

Glatz Black Angus



Vic Cattleman's Bull Sale

- Monday 24th February 2025 at 11am •
"Coroona" Branhholme, Vic



BLACK ANGUS Dusty Martin R608

Black Angus Dusty Martin R608 was retained from our 2020 drop. His combination of Physical Type and Structure blended with his high EMA and IMF is rarely achieved. He is a proven option for heifer matings and mature cows alike.



Like us on Facebook
Glatz Black Angus



Glatz Black Angus

Vic Cattleman's Bull Sale

- Monday 24th February 2025 at 11am •
On Property, "Coroona"
299 Caroon Lane, Branxholme, Vic

CONTACTS

Ben and Samantha Glatz Mobile 0407 712 455
Email glatzblackangus@gmail.com
Website www.glatzsblackangus.com



| | |
|----------------|--------------|
| Sam Savin | 0407 939 910 |
| Rob Aldridge | 0438 656 528 |
| Peter Godbolt | 0457 591 929 |
| Nick Farley | 0427 529 335 |
| Trevor Wiseman | 0427 237 369 |
| Gordon Wood | 0408 813 215 |
| Richard Miller | 0428 849 327 |



AuctionsPlus

Bull Videos Available

LMB LIVESTOCK & LAND PTY LTD

| | |
|--------------|--------------|
| Bernie Grant | 0417 712 144 |
| Hugh Douglas | 0438 778 151 |
| Jack Behncke | 0438 573 668 |

DISCLAIMER

Whilst all due care and attention has been paid to accuracy in the compilation of this catalogue, neither the vendors nor the selling agents or the representative(s) thereof assume any responsibility whatsoever for the correctness, use or interpretation of the information in this sale catalogue.

Welcome

We invite you to attend our annual Victorian autumn bull sale.

Our family graciously acknowledge the support and success of our 2024 autumn and spring bull sales.

Here at Glatz Black Angus, we offer problem-free bulls, brand marketability, consistency, post-sale service and industry-grade acclaim. These are the sound reasons why cattle breeders look to Glatz Black Angus as their preferred genetic partner.

Glatz bulls are generationally bred to be more robust, muscular and profit driven in comparison to some Angus cattle of today. Ideal for self-replacing weaner producers whose calves are finished on grass or short-term grain.

Progeny from Glatz Black Angus bulls reach premium finished carcass weights of 300-350kg in rapid time, on grass or short-term grain. This is what sets Glatz Black Angus bulls apart.

Glatz genetics can advance your self-replacing female herd. Resulting in replacement females that perform and go the distance under heavy stocking rates. Medium framed, easy-keeping and productive. For generations, there's been no compromise made on fertility and production traits, such as scrotal size, milk, and docility. Strict selection for type and structural conformation are non-negotiable.

Our cattle are endorsed by generations of deliberate breeding objectives, driven by Profitability, Predictability and Purpose, resulting in Problem Free Angus bulls.

All Glatz bulls are backed by our own industry leading 3 YEAR Guarantee.

In the instance of bull breakdown or misadventure, we provide immediate service and backup.

The bulls catalogued for this 2025 Victorian Cattleman's Bull Sale represent all that we stand for in breeding profitable Angus cattle. Many of the bulls are from first calf heifers. The majority of bulls catalogued are suitable for heifer joining.

We invite your inspection at our on property Vic Beef Week Open Day, from 9am on Sale Day or at any other time that's convenient.

This sale will be interfaced with AuctionsPlus with live online bidding.

We look forward to seeing you at our sale, Ben and Samantha Glatz.





Sale Information

SALE TIME

The sale is scheduled to commence at 11:00am Vic daylight saving time on Monday 24th February, 2025. Inspections are welcome from 9:00am on Sale Day or at any other time by appointment.

ONLINE BIDDING

The sale will be interfaced with AuctionsPlus.

VIC BEEF WEEK

All bulls catalogued for this sale will be available for inspection at our Vic Beef Week Open Day, Wednesday 29th January, 9am-4pm. On property, "Coroona" 299 Caroona Lane, Branxholme, Vic.

SEMEN TESTING

All bulls catalogued for this sale have passed semen testing and semen morphology criteria, conducted by Nationwide Artificial Breeders. Contact Drew for further information – 0428 925 255.

BULL INSURANCE

Buyers are reminded that any purchases become their responsibility from the fall of the hammer. We strongly recommend that all bulls are comprehensively insured until conclusion of their first mating season.

GENETIC TESTING

All animals catalogued for sale with reasonable likelihood of possessing a copy of the recessive gene for Arthrogyposis Multiplex (AM), Neuropathic Hydrocephalus (NH), Contractural Arachnodactyly (CA) or Developmental Duplication (DD) have been DNA tested to determine their genetic status. The genetic status of every animal is clearly marked in this catalogue.

AMF, NHF, CAF, DDF = Tested Free.
AMFU, NHFU, CAFU, DDFU = Free based on pedigree, but untested.

AMC, NHC, CAC, DDC = Tested Carrier

If you have any questions in relation to genetic testing, please feel free to discuss them with us.

HERD HEALTH

All bulls have been vaccinated and boosted with 7in1 and Pestigard. Furthermore all sale bulls have been treated with Mineral Solutions, Swish and will be drenched prior to sale. All breeding age females are vaccinated with Pestigard and 7 in 1 annually.

BIOSECURITY

Glatz Black Angus hold current status of J-BAS 6.

THE GLATZ BLACK ANGUS GUARANTEE

All Glatz Black Angus bulls are backed by a 3 YEAR GUARANTEE. In the event of a bull proven to be infertile or incapable of natural service the vendor can either offer a suitable replacement if available or issue a credit for future sales. The credit is a pro-rata value of the bull minus the salvage value. The guarantee can only apply if the bulls incapacity is not caused by injury or disease since taking delivery. Any claim must be accompanied by a relevant veterinary certificate. The vendor retains the right to obtain independent veterinary confirmation of any claim. GBA guarantee immediate service and back up if required.

STOCK HANDLING

Glatz Black Angus cattle are always handled with utmost patience and due care. Mustering is generally undertaken with 4 wheel motorbikes. The bulls have been exposed to working dogs.

SEMEN MARKETING RIGHTS

The semen marketing rights for specific lots in this catalogue are to be retained by the vendor. Alterations to these conditions can be negotiated with the vendor prior to the sale.

DELIVERY

The vendor will personally deliver as many of the sale lots as possible, free of charge, to your property. These arrangements can be made after the sale.

REBATE

A 3% rebate is offered to outside agents introducing buyers to the selling agent prior to the sale and settling within 7 days. Outside agents must attend the sale to be eligible.

PHONE BIDDING

Phone bidding will be available for the sale. For further information contact Sam Savin 0407 939 910 or Bernie Grant 0417 712 144.

CATERING

Catering and refreshments will be available before and after the sale.

QR CODES

The QR codes in this catalogue can be scanned with your mobile device to play video material of the animal.

History of Glatz Black Angus

Our History: After marrying in early 1999, Ben and Samantha embarked on their agricultural journey by purchasing their first home: a cozy one-bedroom cottage in the Adelaide Hills. Ben managed a nearby Angus stud herd, while Samantha competed nationwide in various equestrian events, winning both state and national hack and rider class titles. When that stud dispersed, Ben leveraged his expertise to purchase the most elite females as a foundation for his own herd, establishing Glatz Black Angus (GBA), to be run on leased land. Additional cow families were selected from top dispersals like Mel Gibson's NSW Beartooth Angus, Vermont Angus and the Edwards family's Black stud in Victoria. The cow families acquired from these herds run deep in the make-up and function of the GBA herd today.

As the Glatz family grew with the birth of their sons, Dylan in 2001 and Jack in 2003, so did their vision for the GBA herd. In 2005, they purchased their first farming property, Avenue, in South East SA. Ben's extensive experience as an accredited ultrasound technician and Beefclass Structural Assessor provided invaluable insights and pivotal cash flow, enabling the expansion of the GBA herd. Ben continues to scan approximately 10,000 stud cattle of all breeds annually throughout SA, Vic, and WA, generating



2008 – The year of Glatz Black Angus Inaugural Bull Sale.



Be Angus Be Proud video.

knowledge that has been crucial for genetics, management, and networking.

Being first-generation purchaser-farmers is a source of immense pride for us. We have continued to grow our business



organically, driven by Ben's passion for cattle, work ethic and a focused breeding approach. Initially selling bulls privately, GBA held its first on-property bull sale in 2008 to meet growing demand, coinciding with the rising prominence of Angus cattle in the Australian beef industry. These successful sales have gone from strength to strength, with around 100 bulls being sold from Avenue annually.

Our Beliefs: Our loyal clients, from large-scale producers and fellow stud-breeders to young breeders just starting their agricultural journey, are our greatest assets. Many have attended and purchased bulls from every one of our 17 on-property bull sales in SA. Frequent inquiries from other stud breeders and subsequent sales are a valuable metric for assessing the GBA program's nationwide recognition and performance.

Unfortunately, 2021 began with the devastating Blackford Avenue Range bushfire, leveling our entire Avenue Range property and resulting in the loss of all fencing, sheds, fodder, water infrastructure and (saddest of all) 249 GBA stud cattle perished. With volunteer assistance, we rebuilt the farm, and stock numbers were slowly restored; staying true to the non-negotiable objectives that have built the GBA brand. Our cows are robust, fertile, structurally sound, docile, and thrive under high stocking rates. GBA bulls are also robust, structurally sound and docile whilst breeding progeny for our clients perform well under high stocking rates.

Our Future: Amidst the bushfire devastation we remain positive, resilient, optimistic, and prioritise family. Always

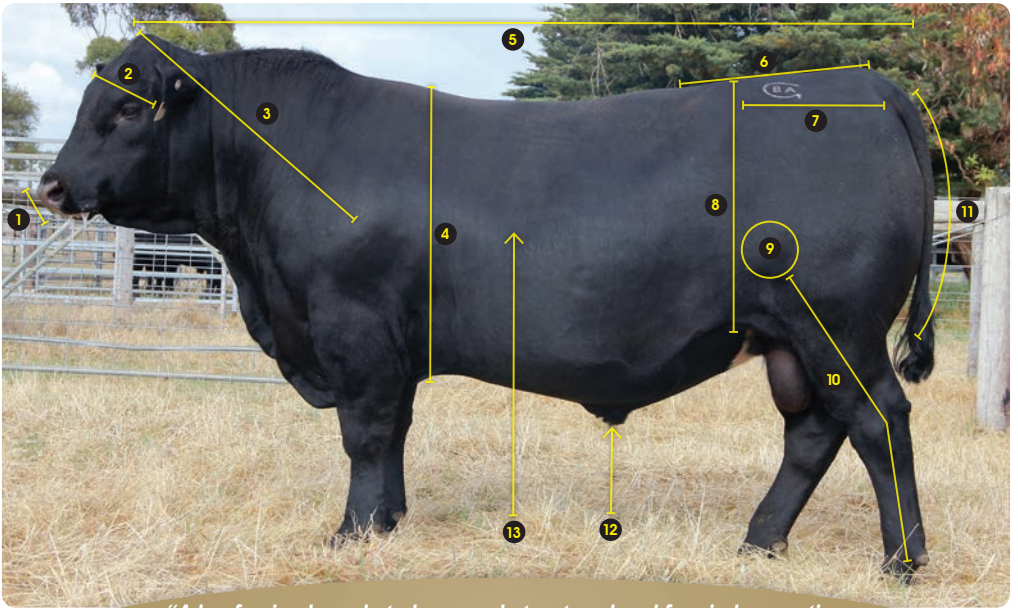
approaching GBA operations with focus, enthusiasm and professionalism. Although Dylan and Jack enjoyed the benefits of growing up in country SA, they both attended boarding school in Melbourne throughout the 2010s, perhaps initiating a gradual spread into Victoria. In 2022, we expanded with the purchase of Coroona in Victoria's Western Districts, bringing us closer to our Victorian client base and conducting our inaugural on-property Spring Bull sale in September 2023. Also bringing Dylan and Jack (who are both attending university in Melbourne) geographically closer for greater family involvement with the farm.

Today, both Avenue and Coroona run a mix of breeding females, replacement females, and sale bulls, with a current herd of 400 stud breeding females. We market approximately 150 bulls annually in February and September auctions, with private sales year-round. We are thoroughly enjoying our new family home at Coroona, appreciated for its picturesque landscape, shelter belts, nature corridors, and beautiful historic bluestone home.

Our journey has been one of growth, resilience, and commitment to excellence. We continue to uphold our dedication to breeding exceptional Angus cattle and supporting our valued clients across Australia. With focus and enthusiasm, we look forward to the future, confident in the strength of our cows, the richness of our history, and the unwavering character of our family and community.

We are truly grateful for the warm welcome we have received in the community, thank you.

“The Ideal Beef Bull”



“A beef animal needs to be sound structured and free in locomotion whilst displaying quality of type. Adhering to these criteria, with some support of performance data (EBV’s) when selecting bulls is best practice. Such practice will reward the profitability and sustainability of your beef breeding business.”

1. Muzzle/Jaw

A wide muzzle and prominent bottom jaw are desirable. These are essential for an animal to forage efficiently. The bottom jaw needs to be prominent from a front view.

2. Head

Width across the eyes can indicate the overall dimension of the animal. A long narrow head is generally attached to a tall and narrow animal. A particularly short and wide head is generally attached to a more moderate animal. Hooding over the eye for protection is favorable.

3. Head Carriage

Well-structured and free moving animals naturally carry their head in a somewhat elevated fashion. In a relaxed stance, these animals can comfortably maintain their ear level equal to or above the top of their shoulder.

4. Chest/Girth

The engine room. Most of the major organs are beneath. A full and deep chest/girth is a true indicator of an animal’s constitution and it’s ability to maintain good condition. The chest/girth should blend into the animal’s dimension, not as a division between the front and rear.

5. Body Length

Length of body increases weight on the scales. Heavy and well-balanced cattle have extra length across all thirds. Nose to shoulder. Shoulder to hip. Hip to pin.

6. Tail Set

A neat tail set is not just an aesthetic preference. A correct tail set should finish off the spine smoothly with minimal deviation, up or down. Higher and more prominent tail sets often coincide with high pin bones, resulting in harder calving females.

7. Hip to Pin

Cattle that are longer and angled correctly from hip to pin have more reproductive area. An angle that is close to level from hip to pin is ideal. A sloping angle from hip to pin is preferred over an increasing angle. It’s not easy for a cow to push a calf up hill.

8. Depth of Flank

The depth of an animal from the hip down to it’s flank is a true indicator of it’s fleshing ability, constitution and dimension. Animals that cut up high in the flank can be harder doing, leaner and not as maternal.

9. Stifle

Bulging of the stifle muscle is an indicator of how much true muscle is within an animal. Heavily muscled bulls when examined from behind exhibit their widest point at the stifle.

10. Rear Legs

Rear leg structure is one of the most critical aspects of working bulls and functional females. Post Legged/Straight Legged bulls have a far greater risk of stifle breakdown and arthritic side effects which often co-inside with steep pastern angle. The ideal skeletal angle from stifle-hock-pastern is around 140 degrees. As this angle becomes straighter with post legged animals, their freedom of movement, suspension in movement and length of stride are compromised.

11. Butt Shape

Roundness of butt is a good indicator of muscularity in bulls. Heavier muscled bulls have an even curve that starts at the pins and continues down deep into the thigh. Lighter muscled bulls will express a straighter curve that does not fill deep into the thigh, regardless of condition. From behind, heavier muscled bulls are widest at the stifle and full between the legs. Lighter muscled bulls are widest at the hips and become narrower down to the thigh.

12. Sheath

Broken penises are the most common breakdown in working bulls. Selecting bulls with tighter and less pendulous sheaths can provide some defense against this. Bulls with tighter and less pendulous sheaths generally have more control during service and are less prone to sheath damage and infections.

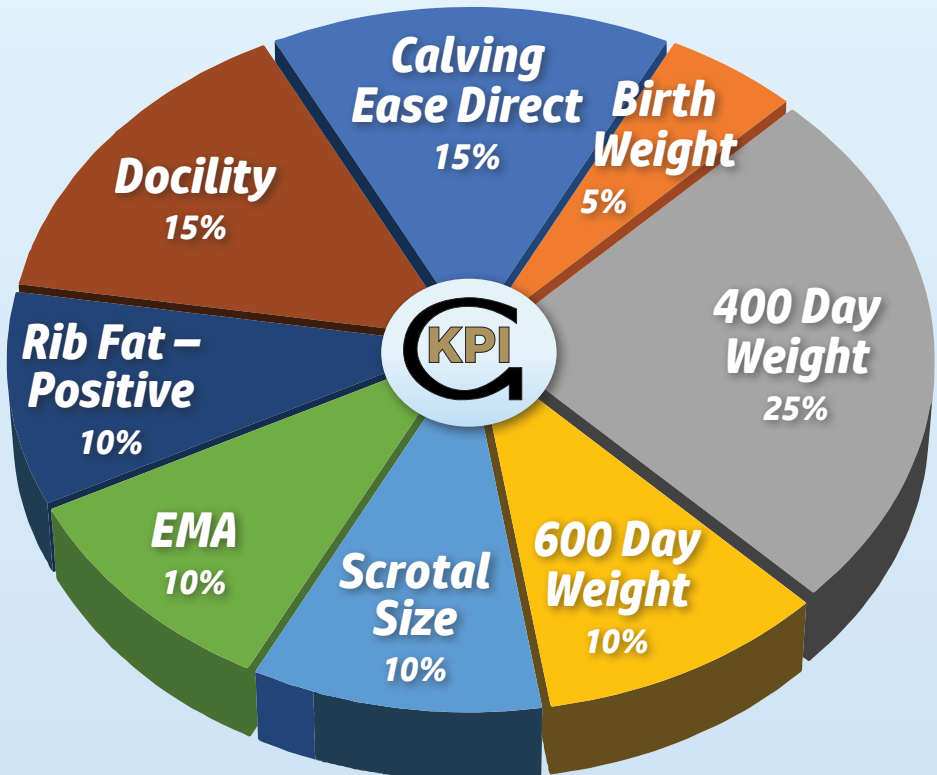
13. Hair Type

Slick, fine hair is more desirable than coarse and sometimes curly hair. Desirable hair type will often correlate to cattle that maintain good health and condition. Slick coated cattle will always present to their best at point of sale.

Glatz's

KPI

Key Performance Indicators



Glatz's "KPI" is an innovative 'EBV Only' analysis. The KPI formula has been developed in house at Glatz Black Angus and describes the sale bulls purely from an EBV standpoint. The key individual traits are combined with each individual trait's level of influence therefore establishing a total KPI value.

The KPI rates all bulls based on the EBV traits of most economic influence to Glatz's southern Australian based clientele. Self-replacing weaner producers whose calves are finished on grass or short-term grain.

Glatz's KPI specifically targets the profitability traits of its commercial cattle clients.

Note – Specific EBV's need to be considered when selecting bulls for heifer joining. We recommend Calving Ease Direct (CED) as the number one EBV of importance with some support from Birth Weight (BW) and Gestation Length (GL).

Reference Sires



*Black Angus
Dusty Martin R608*

- * Top 2% of the breed for Angus Breeding Index
- * Top 4% of the breed for 200 Growth
- * Top 9% of the breed for Short Gestation Length and EMA



*Black Angus
Beast Mode R70*

- * Breed elite Structural Scores
- * Top 6% of the breed for Docility
- * Top 8-14% of the breed for 200 Growth, Retail Beef Yield, Feed Efficiency and Foot Claw Shape



RS BLACK ANGUS DUSTY MARTIN R608^{PV} Ident: SJQR608
 Born: 18/8/2020 Genetic Status: AMF,CAF,DDF,NHF,DWF,MAF,MHF,OHF,OSF,RGF Mating Type: AI Registration Level: HBR

C R A BEXTOR 872 5205 608# MCC DAYBREAK#
 G A R PROPHET^{SV} G A R ANTICIPATION#
 G A R OBJECTIVE 1885# G A R 5050 NEW DESIGN 0530#
SIRE: QMUM13 CLUNES CROSSING DUSTY M13^{PV} DAM: YOAL81 YOTHAMURRA L81^{SV}
 TE MANIA BERKLEY B1^{PV} LAWSONS DINKY-DI Z191^{SV}
 CLUNES CROSSING GLORIOUS G1^{SV} LAWSONS DINKY DI E1121^{SV}
 TE MANIA LOWAN A1# LAWSONS SOLUTION C987#

| Mid December 2024 TransTasman Angus Cattle Evaluation | | | | | | | | |
|---|---------------------|------------------------|-------------------------|-------------------|---------------------|---------------------|---------------------|----------|
| TACE | Calving Ease Direct | Calving Ease Daughters | Gestation Length (days) | Birth Weight (kg) | 200 Day Weight (kg) | 400 Day Weight (kg) | 600 Day Weight (kg) | MCW (kg) |
| EBV | +1.3 | +5.8 | -7.9 | +4.0 | +66 | +104 | +120 | +93 |
| ACC | 69% | 63% | 87% | 90% | 89% | 87% | 89% | 85% |
| Milk (kg) | Scrotal Size (cm) | CWT (kg) | EMA (sq cm) | Rib Fat (mm) | Rump Fat (mm) | RBY % | IMF % | Docility |
| +6 | +2.1 | +64 | +11.2 | -2.6 | -3.6 | +0.8 | +3.0 | +13 |
| 78% | 87% | 79% | 78% | 78% | 79% | 72% | 80% | 83% |

Traits Observed: GL,200WT,400WT,SC,Scan(EMA,Rib,Rump,IMF),DOC,Genomics

Statistics: Number of Herds: 3, Prog Analysed: 28, Genomic Prog: 4

Black Angus Dusty Martin R608 was retained from our 2020 drop at Glatz Black Angus. His combination of Physical Type and Structure blended with High EMA and IMF is rarely achieved. He has proven to be a good option for heifer matings and mature cows alike. Top 2% of the Angus breed for Angus Breeding Index. Top 4% of the breed for 200 Growth. Top 9% of the breed for Short Gestation Length and EMA

RS BLACK ANGUS BEAST MODE R70^{SV} Ident: SJQR70
 Born: 18/4/2020 Genetic Status: AMFU,CAFU,DDFU,NHFU Mating Type: AI Registration Level: HBR

C R A BEXTOR 872 5205 608# VERMONT DRAMBUIE D057^{PV}
 G A R PROPHET^{SV} BLACK ANGUS BRAMBUIE F197^{SV}
 G A R OBJECTIVE 1885# VERMONT MARTINA D442#
SIRE: USA17960722 BALDRIDGE BEAST MODE B074^{PV} DAM: SJQJ257 BLACK ANGUS EMPRESS J257#
 STYLES UPGRADE J59# BLACK ANGUS NEWSLINE B37^{SV}
 BALDRIDGE ISABEL Y69# BLACK ANGUS EMPRESS F171#
 BALDRIDGE ISABEL T935# BLACK ANGUS EMPRESS C41#

| Mid December 2024 TransTasman Angus Cattle Evaluation | | | | | | | | |
|---|---------------------|------------------------|-------------------------|-------------------|---------------------|---------------------|---------------------|----------|
| TACE | Calving Ease Direct | Calving Ease Daughters | Gestation Length (days) | Birth Weight (kg) | 200 Day Weight (kg) | 400 Day Weight (kg) | 600 Day Weight (kg) | MCW (kg) |
| EBV | +1.2 | +1.7 | -1.5 | +4.4 | +60 | +97 | +118 | +107 |
| ACC | 73% | 64% | 83% | 87% | 86% | 85% | 86% | 83% |
| Milk (kg) | Scrotal Size (cm) | CWT (kg) | EMA (sq cm) | Rib Fat (mm) | Rump Fat (mm) | RBY % | IMF % | Docility |
| +11 | +3.5 | +63 | +7.1 | -1.5 | -3.4 | +1.1 | +1.1 | +37 |
| 77% | 85% | 76% | 75% | 76% | 76% | 70% | 77% | 81% |

Traits Observed: GL,BWT,200WT,400WT,600WT,SC,Scan(EMA,Rib,Rump,IMF),DOC,Genomics

Statistics: Number of Herds: 1, Prog Analysed: 14, Genomic Prog: 1

Black Angus Beast Mode R70 was retained for his Elite Foot Structure, Powerful Phenotype and Superb Docility. Top 6% of the Angus breed for Docility. Top 8-14% of the breed for 200 Growth, Retail Beef Yield, Feed Efficiency and Foot Claw Shape.

REFERENCES



Reference Sires



*Black Angus
Wattle Street Q127*

- * Top 1% of the breed for Docility and Carcass Weight.
- * Top 2% of the breed for Foot Scores
- * Top 3-5% of the breed for 200 Growth, 400 Growth and 600 Growth



*Black Angus
Geddes R605*

- * Top 1% of the breed for Milk
- * Top 6-9% of the breed for Calving Ease, Short Gestation Length and Low Birth Weight
- * Top 7-8% of the breed for 400 Growth, 600 Growth and Carcass Weight



RS BLACK ANGUS WATTLE STREET Q127^{SV} Ident: SJQQ127

Born: 15/5/2019 Genetic Status: AMF,CAF,DDF,NHF,DWF,MAF,MHF,OHF,OSF,RGF Mating Type: Natural Registration Level: HBR

BASIN FRANCHISE P142[#]
EF COMPLEMENT 8088^{PV}
EF EVERELDA ENTENSE 6117[#]

K C F BENNETT PERFORMER[#]
WITHERSWOOD PERFORMER E49^{PV}
WITHERSWOOD FLOWER C36^{SV}

SIRE: SJQL51 BLACK ANGUS COMPLEMENT L51^{SV}

DAM: SJQK53 BLACK ANGUS MST K53[#]

ARDROSSAN EQUATOR A241^{PV}
BLACK ANGUS EXPO J119[#]
BLACK ANGUS C804 EXPO A45[#]

ARDROSSAN ADMIRAL A2^{PV}
BLACK ANGUS CLEOPATRA D25[#]
BLACK ANGUS CLEOPATRA A1[#]

| Mid December 2024 TransTasman Angus Cattle Evaluation | | | | | | | | |
|---|---------------------|------------------------|-------------------------|-------------------|---------------------|---------------------|---------------------|-------------|
| TACE | Calving Ease Direct | Calving Ease Daughters | Gestation Length (days) | Birth Weight (kg) | 200 Day Weight (kg) | 400 Day Weight (kg) | 600 Day Weight (kg) | MCW (kg) |
| EBV | -14.3 | -1.9 | -0.9 | +7.7 | +67 | +115 | +155 | +143 |
| ACC | 72% | 60% | 84% | 91% | 91% | 90% | 92% | 86% |
| Milk (kg) | Scrotal Size (cm) | CWT (kg) | EMA (sq cm) | Rib Fat (mm) | Rump Fat (mm) | RBY % | IMF % | Docility |
| +19 | +3.1 | +103 | +10.2 | -1.5 | -1.1 | +1.1 | -0.4 | +50 |
| 80% | 88% | 79% | 79% | 79% | 80% | 73% | 80% | 88% |

Traits Observed: BWT,200WT,400WT,DOC,Genomics
Statistics: Number of Herds: 5, Prog Analysed: 126, Genomic Prog: 27

The first progeny of Black Angus Wattle Street Q127 sold to an equal top price of \$40,000 in Glatz's 2023 SA Bull Sale and averaged \$24,250. Wattle Street is a Proper Beef Bull. Super Sound, Super Docile, Super Thick and Heavy. Wattle Street ranks in the Top 1% of the Angus breed for Docility and Carcase Weight. Top 2% for Foot Scores. Top 3-5% for 200 Growth, 400 Growth and 600 Growth.

RS BLACK ANGUS GEDDES R605^{PV} Ident: SJQR605

Born: 16/8/2020 Genetic Status: AMF,CAF,DDF,NHF,DWF,MAF,MHF,OHF,OSF,RGF Mating Type: AI Registration Level: HBR

SUMMITCREST COMPLETE 1P55[#]
KM BROKEN BOW 002^{PV}
SUMMITCREST PRINCESS 0P12[#]

AYRVALE BARTEL E7^{PV}
LAWSONS INCREDIBLE H803^{PV}
LAWSONS DINKY DI E447^{PV}

SIRE: USA18886461 VARILEK GEDDES 7068^{PV}

DAM: VLYL882 LAWSONS INCREDIBLE L882^E

VARILEK CONFIDENCE 3004 0[#]
VARILEK GOLDIE 5051 506[#]
VARILEK GOLDIE 3228 314[#]

TUWHARETOA REGENT D145^{PV}
LAWSONS REGENT J1425^{SV}
LAWSONS ULTIMATE F672[#]

| Mid December 2024 TransTasman Angus Cattle Evaluation | | | | | | | | |
|---|---------------------|------------------------|-------------------------|-------------------|---------------------|---------------------|---------------------|-------------|
| TACE | Calving Ease Direct | Calving Ease Daughters | Gestation Length (days) | Birth Weight (kg) | 200 Day Weight (kg) | 400 Day Weight (kg) | 600 Day Weight (kg) | MCW (kg) |
| EBV | +8.9 | +5.7 | -7.9 | +1.5 | +58 | +111 | +146 | +122 |
| ACC | 73% | 60% | 90% | 91% | 89% | 86% | 87% | 83% |
| Milk (kg) | Scrotal Size (cm) | CWT (kg) | EMA (sq cm) | Rib Fat (mm) | Rump Fat (mm) | RBY % | IMF % | Docility |
| +32 | +1.9 | +88 | +4.8 | -3.5 | -1.9 | -0.2 | +3.3 | +9 |
| 76% | 84% | 77% | 74% | 75% | 75% | 67% | 77% | 80% |

Traits Observed: GL,200WT,400WT,SC,Scan(EMA,Rib,Rump,IMF),DOC,Genomics
Statistics: Number of Herds: 3, Prog Analysed: 54, Genomic Prog: 45

Black Angus Geddes R605 topped Glatz's 2022 SA sale @ \$36,000. The impressive performance of his progeny has now positioned him within the top percentiles of the Angus breed for Calving Ease, Low Birth Weight, Growth, Milk and IMF. His combination of curve bending performance in such good physical type is rare.

REFERENCES

Reference Sires



*Glenoch JK
Makahu M602*

- * Australia's go-to reliability sire
- * Top 3% of the breed for Scrotal Size
- * Top 8-23% of the breed for 200 Growth, 400 Growth, 600 Growth and Foot Scores



*Black Angus
Jonah Lamu P229*

- * Super Impressive Angus Sire
- * Positive Calving Ease, Moderate Birth Weight and High Growth
- * Within the Top 25% of the breed for 12 traits



| | | |
|---|---|---|
| RS | GLENOCH-JK MAKAHU M602^{SV} | Ident: QLLM602 |
| Born: 6/8/2016 | Genetic Status: AMFU,CAFU,DDFU,NHFU | Mating Type: AI Registration Level: HBR |
| SCHURR 77 1346 EXCEL [#] SCHURRTOP REALITY X723 [#] SCHURRTOP 8019 V141 [#] | | |
| TUWHARETOA REGENT D145 ^{SV} GLENOCH HINMAN H221 ^{SV} GLENOCH FLOWER D80 ^{SV} | | |
| SIRE: NZE14647008839 MATAURI REALITY 839 [#] | DAM: QLLK615 GLENOCH-JK ANN K615 ^{SV} | |
| TE MANIA ULONG U41 ^{SV} MATAURI 06663 [#] MATAURI 04456 AB [#] | | |
| TE MANIA INFINITY 04 379 AB [#] GLENOCH-JK ANN F606 ^{SV} GLENOCH ANN C102 ^{SV} | | |

| Mid December 2024 TransTasman Angus Cattle Evaluation | | | | | | | | |
|---|---------------------|------------------------|-------------------------|-------------------|---------------------|---------------------|---------------------|-------------|
| | Calving Ease Direct | Calving Ease Daughters | Gestation Length (days) | Birth Weight (kg) | 200 Day Weight (kg) | 400 Day Weight (kg) | 600 Day Weight (kg) | MCW (kg) |
| EBV | +1.8 | +1.0 | -6.4 | +5.4 | +57 | +100 | +133 | +138 |
| ACC | 91% | 81% | 99% | 98% | 98% | 98% | 98% | 96% |
| Milk (kg) | Scrotal Size (cm) | CWT (kg) | EMA (sq cm) | Rib Fat (mm) | Rump Fat (mm) | RBY % | IMF % | Docility |
| +22 | +4.6 | +73 | +8.0 | +0.0 | -3.5 | +0.6 | +1.6 | +22 |
| 95% | 98% | 91% | 89% | 90% | 90% | 86% | 89% | 98% |

Traits Observed: GL,CE,BWT,200WT,400WT(x2),SC,Scan(EMA,Rib,Rump,IMF),Genomics
 Statistics: Number of Herds: 87, Prog Analysed: 1255, Genomic Prog: 638

Makahu is owned by Glatz Black Angus and has been one of Australia's go-to AI bulls for reliability in recent years. All breeders that inspect Makahu himself or his progeny want a piece of him. He is particularly sound and super docile in a large and athletic frame. He ranks in the Top 3% of the Angus breed for Scrotal Size. Top 8-23% of the breed for 200 Growth, 400 Growth, 600 Growth and Foot Scores.

| | | |
|--|--|---|
| RS | BLACK ANGUS JONAH LOMU P229^{SV} | Ident: SJQP229 |
| Born: 29/4/2018 | Genetic Status: AMF,CAF,DDF,NHF,DWF,MAF,MHF,OHF,OSF,RGF | Mating Type: AI Registration Level: HBR |
| TE MANIA BERKLEY B1 ^{PV} TE MANIA EMPEROR E343 ^{SV} TE MANIA LOWAN Z74 ^{PV} | | |
| BASIN FRANCHISE P142 [#] EF COMPLEMENT 8088 ^{SV} EF EVERELDA ENTENSE 6117 [#] | | |
| SIRE: NZE19507013J7 STORTH OAKS JACK J7 ^{SV} | DAM: SJQL47 BLACK ANGUS DREAM L47 [#] | |
| LAWSONS DINKY-DI Z191 ^{SV} STORTH OAKS G183 [#] STORTH OAKS E210 [#] | | |
| ARDROSSAN EQUATOR A241 ^{PV} BLACK ANGUS DREAM J79 [#] VERMONT DREAM D441 [#] | | |

| Mid December 2024 TransTasman Angus Cattle Evaluation | | | | | | | | |
|---|---------------------|------------------------|-------------------------|-------------------|---------------------|---------------------|---------------------|-------------|
| | Calving Ease Direct | Calving Ease Daughters | Gestation Length (days) | Birth Weight (kg) | 200 Day Weight (kg) | 400 Day Weight (kg) | 600 Day Weight (kg) | MCW (kg) |
| EBV | +5.9 | +6.0 | -3.0 | +4.3 | +59 | +104 | +136 | +116 |
| ACC | 75% | 64% | 85% | 93% | 92% | 91% | 93% | 87% |
| Milk (kg) | Scrotal Size (cm) | CWT (kg) | EMA (sq cm) | Rib Fat (mm) | Rump Fat (mm) | RBY % | IMF % | Docility |
| +17 | +3.4 | +79 | +5.4 | -0.5 | -1.1 | +0.0 | +2.2 | +37 |
| 82% | 90% | 82% | 81% | 81% | 82% | 76% | 82% | 89% |

Traits Observed: GL,BWT,200WT,400WT,600WT,SC,Scan(EMA,Rib,Rump,IMF),DOC,Genomics
 Statistics: Number of Herds: 2, Prog Analysed: 67, Genomic Prog: 7

Black Angus Jonah Lomu P229 is one Super Impressive Angus Sire. He is highly proven for Positive Calving Ease, Moderate Birth Weight and High Growth. He ranks within the Top 25% of the Angus breed for 12 individual traits.

REFERENCES



RS RENNYLEA NATIONWIDE N432^{PV} Ident: NORN432

Born: 23/7/2017 Genetic Status: AMF,CAF,DDF,NHF,DWF,MAF,MHF,OSF,RGF Mating Type: ET Registration Level: HBR

G A R NEW DESIGN 5050[#]
G A R INGENUITY[#]
G A R OBJECTIVE 1067[#]

TE MANIA YORKSHIRE Y437^{PV}
TE MANIA BERKLEY B1^{PV}
TE MANIA LOWAN Z53[#]

SIRE: USA17366506 H P C A INTENSITY[#]

DAM: NORH367 RENNYLEA H367^{SV}

G A R PREDESTINED[#]
G A R PREDESTINED 287L[#]
G A R OBJECTIVE 1885[#]

TE MANIA INFINITY 04 379 AB[#]
RENNYLEA F228[#]
RENNYLEA D6[#]

Mid December 2024 TransTasman Angus Cattle Evaluation

| TACE | Calving Ease Direct | Calving Ease Daughters | Gestation Length (days) | Birth Weight (kg) | 200 Day Weight (kg) | 400 Day Weight (kg) | 600 Day Weight (kg) | MCW (kg) |
|-----------|---------------------|------------------------|-------------------------|-------------------|---------------------|---------------------|---------------------|----------|
| EBV | +2.6 | +7.2 | -7.7 | +4.9 | +71 | +125 | +159 | +166 |
| ACC | 81% | 72% | 98% | 98% | 98% | 97% | 97% | 91% |
| Milk (kg) | Scrotal Size (cm) | CWT (kg) | EMA (sq cm) | Rib Fat (mm) | Rump Fat (mm) | RBY % | IMF % | Docility |
| +19 | +0.7 | +102 | +5.4 | -1.4 | -2.9 | +0.3 | +1.8 | +21 |
| 91% | 96% | 86% | 86% | 86% | 86% | 81% | 86% | 94% |

Traits Observed: BWT,200WT,400WT,SC,Scan(EMA,Rib,Rump,IMF),DOC,Structure(Claw Set x 1, Foot Angle x 1),Genomics
Statistics: Number of Herds: 22, Prog Analysed: 844, Genomic Prog: 491

Nationwide was selected for AI use as a proven 6yo sire. He ranks in the Top 1-2% of the Angus breed for 200 Growth, 400 Growth, 600 Growth and Carcase Weight. Positive Calving Ease.

REFERENCES

RS DIAMOND ONE BEAST MODE Q48^{SV} Ident: WKGQ48

Born: 17/2/2019 Genetic Status: AMFU,CAFU,DDFU,NHFU,DWF Mating Type: AI Registration Level: HBR

C R A BEXTOR 872 5205 608[#]
G A R PROPHET^{SV}
G A R OBJECTIVE 1885[#]

TE MANIA BARTEL B219^{PV}
AYRVALE BARTEL E7^{PV}
EAGLEHAWK JEDDA B32^{SV}

SIRE: USA17960722 BALDRIDGE BEAST MODE B074^{PV}

DAM: WKGL60 DIAMOND TREE BARTEL L60[#]

STYLES UPGRADE J59[#]
BALDRIDGE ISABEL Y69[#]
BALDRIDGE ISABEL T935[#]

HOOVER DAM[#]
DIAMOND TREE HOOVER DAM J88[#]
DIAMOND TREE IDEAL G59[#]

Mid December 2024 TransTasman Angus Cattle Evaluation

| TACE | Calving Ease Direct | Calving Ease Daughters | Gestation Length (days) | Birth Weight (kg) | 200 Day Weight (kg) | 400 Day Weight (kg) | 600 Day Weight (kg) | MCW (kg) |
|-----------|---------------------|------------------------|-------------------------|-------------------|---------------------|---------------------|---------------------|----------|
| EBV | +0.2 | +6.9 | -3.1 | +2.8 | +59 | +92 | +110 | +92 |
| ACC | 75% | 66% | 84% | 92% | 90% | 90% | 91% | 86% |
| Milk (kg) | Scrotal Size (cm) | CWT (kg) | EMA (sq cm) | Rib Fat (mm) | Rump Fat (mm) | RBY % | IMF % | Docility |
| +21 | +1.8 | +60 | +4.1 | -1.5 | -3.4 | +0.4 | +4.8 | +19 |
| 78% | 89% | 79% | 79% | 79% | 79% | 74% | 80% | 86% |

Traits Observed: GL,BWT,200WT,400WT,Genomics
Statistics: Number of Herds: 1, Prog Analysed: 56, Genomic Prog: 2

Beast Mode Q48 has been a reliable option on heifers and mature cows for many years. He is much more robust and muscular than your typical higher IMF sire.



Glatz Black Angus

Vic Cattleman's Bull Sale 2025

SALE BULLS



Lot 1 **BLACK ANGUS ROCKSTAR U83#** **Ident: SJQ23U83**
Born: 28/4/2023 Genetic Status: AMFU,CAFU,DDFU,NHFU Mating Type: Natural Registration Level: APR

G A R PROPHET^{SV} STORTH OAKS JACK J7^{SV}
BALDRIDGE BEAST MODE B074^{PV} BLACK ANGUS JONAH LOMU P229^{SV}
BALDRIDGE ISABEL Y69[#] BLACK ANGUS DREAM L47[#]
SIRE: SJQR70 BLACK ANGUS BEAST MODE R70^{SV} **DAM: SJQ21S136 BLACK ANGUS JENNIFER S136[#]**
BLACK ANGUS BRAMBUIE F197^{SV} BOORAGUL WT458N K11^{SV}
BLACK ANGUS EMPRESS J257[#] BLACK ANGUS JENNIFER P283[#]
BLACK ANGUS EMPRESS F171[#] BLACK ANGUS JENNIFER K247[#]

| Mid December 2024 TransTasman Angus Cattle Evaluation | | | | | | | | |
|---|---------------------|------------------------|-------------------------|-------------------|---------------------|---------------------|---------------------|----------|
| TACE | Calving Ease Direct | Calving Ease Daughters | Gestation Length (days) | Birth Weight (kg) | 200 Day Weight (kg) | 400 Day Weight (kg) | 600 Day Weight (kg) | MCW (kg) |
| EBV | +1.9 | +2.4 | -2.6 | +4.0 | +53 | +90 | +112 | +96 |
| ACC | 54% | 46% | 63% | 70% | 67% | 68% | 66% | 63% |
| Milk (kg) | Scrotal Size (cm) | CWT (kg) | EMA (sq cm) | Rib Fat (mm) | Rump Fat (mm) | RBV % | IMF % | Docility |
| +13 | +3.8 | +60 | +6.9 | -1.4 | -2.7 | +0.8 | +1.5 | +36 |
| 57% | 72% | 56% | 55% | 58% | 58% | 52% | 60% | 59% |

Traits Observed: BWT,200WT,400WT,SC,Scan(EMA,Rib,Rump,IMF),DOC

Rockstar U83 is from a first calving 2yo heifer and is suitable for heifer joining. Top 7% of the Angus breed for Docility. Top 9% for Scrotal Size.



Scrotal Circumference: 42.5cm Age: 21 months

Purchaser..... \$.....

20% 50%

| | | |
|--|---|---|
| Lot 2 | BLACK ANGUS JONAH LOMU U88[#] | Ident: SJQ23U88 |
| Born: 7/5/2023 | Genetic Status: AMFU,CAFU,DDFU,NHFU | Mating Type: Natural |
| | Registration Level: HBR | |
| TE MANIA EMPEROR E343 ^{PV} STORTH OAKS JACK J7 ^{SV} STORTH OAKS G183 [#] | | EF COMMANDO 1366 ^{PV} BALDRIDGE 38 SPECIAL ^{PV} BALDRIDGE ISABEL Y69 [#] |
| SIRE: SJQP229 BLACK ANGUS JONAH LOMU P229^{SV} | DAM: SJQR57 BLACK ANGUS WHISTLING BIRD R57[#] | |
| EF COMPLEMENT 8088 ^{PV} BLACK ANGUS DREAM L47 [#] BLACK ANGUS DREAM J79 [#] | ARDROSSAN MATERNAL POWER A60 ^{PV} BLACK ANGUS WHISTLING BIRD G7 [#] BLACK ANGUS WHISTLING BIRD E27 [#] | |

| Mid December 2024 TransTasman Angus Cattle Evaluation | | | | | | | | |
|---|---------------------|------------------------|-------------------------|-------------------|---------------------|---------------------|---------------------|------------|
| TACE | Calving Ease Direct | Calving Ease Daughters | Gestation Length (days) | Birth Weight (kg) | 200 Day Weight (kg) | 400 Day Weight (kg) | 600 Day Weight (kg) | MCW (kg) |
| EBV | +6.8 | +6.4 | -4.4 | +3.1 | +51 | +90 | +118 | +91 |
| ACC | 58% | 49% | 68% | 72% | 69% | 70% | 69% | 66% |
| Milk (kg) | Scrotal Size (cm) | CWT (kg) | EMA (sq cm) | Rib Fat (mm) | Rump Fat (mm) | RBV % | IMF % | Docility |
| +15 | +2.9 | +63 | +6.8 | +0.7 | +0.1 | +0.2 | +1.8 | +28 |
| 61% | 74% | 60% | 60% | 61% | 61% | 56% | 64% | 63% |

Traits Observed: BWT,200WT,400WT,SC,Scan(EMA,Rib,Rump,IMF),DOC

Jonah Lomu U88 is an impressive heifer joining option. 4th highest KPI in the sale. He combines high ranking Calving Ease with strong Growth and Positive Fat. A brother of U88 sold to Barossa Blacks Angus Stud in 2024.

DOCILITY ST★R RATING



194

Scrotal Circumference: 43cm **Age:** 20.5 months

Purchaser..... \$.....

| | | |
|--|--|---|
| Lot 3 | BLACK ANGUS NEW GROUND U39^{PV} | Ident: SJQ23U39 |
| Born: 5/4/2023 | Genetic Status: AMFU,CAFU,DDFU,NHFU | Mating Type: ET |
| | Registration Level: HBR | |
| A A R TEN X 7008 S A ^{SV} V A R DISCOVERY 2240 ^{PV} DEER VALLEY RITA 0308 [#] | | SCHURRTOP REALITY X723 [#] MATAURI REALITY 839 [#] MATAURI 06663 [#] |
| SIRE: TFAN90 LANDFALL NEW GROUND N90^{PV} | DAM: SYAM173 STONEY POINT YANKEE QUEEN M173^{PV} | |
| MATAURI REALITY 839 [#] LANDFALL ELSA L88 ^{PV} LANDFALL ELSA J139 [#] | SITZ WISDOM 481 [#] STONEY POINT YANKEE QUEEN K197 ^{PV} STONEY POINT YANKEE QUEEN H193 ^{SV} | |

| Mid December 2024 TransTasman Angus Cattle Evaluation | | | | | | | | |
|---|---------------------|------------------------|-------------------------|-------------------|---------------------|---------------------|---------------------|-------------|
| TACE | Calving Ease Direct | Calving Ease Daughters | Gestation Length (days) | Birth Weight (kg) | 200 Day Weight (kg) | 400 Day Weight (kg) | 600 Day Weight (kg) | MCW (kg) |
| EBV | -7.1 | +3.5 | -5.5 | +7.0 | +64 | +122 | +155 | +162 |
| ACC | 73% | 67% | 84% | 84% | 85% | 83% | 84% | 82% |
| Milk (kg) | Scrotal Size (cm) | CWT (kg) | EMA (sq cm) | Rib Fat (mm) | Rump Fat (mm) | RBV % | IMF % | Docility |
| +13 | +5.3 | +78 | +5.9 | +3.4 | +4.3 | -1.1 | +3.2 | +48 |
| 79% | 82% | 75% | 74% | 74% | 75% | 68% | 77% | 81% |

Traits Observed: BWT,200WT,400WT,SC,Scan(EMA,Rib,Rump,IMF),DOC,Genomics

#1 ranked KPI bull in the sale! Black Angus New Ground U39 is an ET son of our \$46,000 record priced female - Stoney Point Yankee Queen M173. His sire is the \$75,000 Landfall New Ground. Black Angus New Ground U39 is an 'A' Grader with powerful data. He sits inside the Top 1% of the Angus breed for Docility. Top 1% for Scrotal Size. Top 2-4% for 400 Growth and 600 Growth. Top 3% for Positive Rib Fat and Positive Rump Fat. Semen marketing rights retained.

DOCILITY ST★R RATING



222

Scrotal Circumference: 41.5cm **Age:** 22 months

Purchaser..... \$.....

20% 50%

Lot 4 BLACK ANGUS MR SQUIGGLE U47^{PV} Ident: SJQ23U47
 Born: 7/4/2023 Genetic Status: AMFU,CAFU,DDFU,NHFU Mating Type: ET Registration Level: HBR

EF COMMANDO 1366^{PV}
 MILLAH MURRAH PARATROOPER P15^{PV}
 MILLAH MURRAH ELA M9^{PV}
SIRE: NMMR38 MILLAH MURRAH ROCKET MAN R38^{PV}
 LD CAPITALIST 316^{PV}
 MILLAH MURRAH ABIGAIL P57^{PV}
 MILLAH MURRAH ABIGAIL H232^{PV}

SCHURRTOP REALITY X723[#]
 MATAURI REALITY 839[#]
 MATAURI 06663[#]
DAM: SYAM173 STONEY POINT YANKEE QUEEN M173^{PV}
 SITZ WISDOM 481[#]
 STONEY POINT YANKEE QUEEN K197^{PV}
 STONEY POINT YANKEE QUEEN H193^{SV}

| Mid December 2024 TransTasman Angus Cattle Evaluation | | | | | | | | |
|---|---------------------|------------------------|-------------------------|-------------------|---------------------|---------------------|---------------------|----------|
| TACE | Calving Ease Direct | Calving Ease Daughters | Gestation Length (days) | Birth Weight (kg) | 200 Day Weight (kg) | 400 Day Weight (kg) | 600 Day Weight (kg) | MCW (kg) |
| EBV | +5.8 | +6.8 | -3.8 | +3.9 | +55 | +102 | +124 | +112 |
| ACC | 67% | 59% | 83% | 83% | 84% | 82% | 83% | 79% |
| Milk (kg) | Scrotal Size (cm) | CWT (kg) | EMA (sq cm) | Rib Fat (mm) | Rump Fat (mm) | RBV % | IMF % | Docility |
| +12 | +3.6 | +67 | +4.2 | +1.3 | +3.1 | -0.3 | +1.9 | +9 |
| 75% | 81% | 71% | 71% | 71% | 72% | 63% | 75% | 79% |

Traits Observed: BWT,200WT,600WT,SC,Scan(EMA,Rib,Rump,IMF),DOC,Genomics

Mr Squiggle U47 is another ET son of our \$46,000 record priced female - Stoney Point Yankee Queen M173. His sire is the \$280,000 Millah Murrah Rocket Man. Mr Squiggle U47 is another 'A' Grader with true breed type and particularly sound structure. 6th Highest KPI bull in the sale. He is ranked inside the Top 7% of the Angus breed for Positive Fat. Top 10% for Scrotal Size. Top 17-21% for Calving Ease Direct, Calving Ease Daughters and 400 Growth. Semen marketing rights retained.

DOCILITY ST★R RATING

★★★★★

KPI
184

Scrotal Circumference: 45cm Age: 21.5 months

Purchaser..... \$.....

Lot 5 BLACK ANGUS NATIONWIDE U205^{SV} Ident: SJQ23U205
 Born: 2/4/2023 Genetic Status: AMFU,CAFU,DDFU,NHFU Mating Type: AI Registration Level: HBR

G A R INGENUITY[#]
 H P C A INTENSITY[#]
 G A R PREDESTINED 287L[#]
SIRE: NORN432 RENNYLEA NATIONWIDE N432^{PV}
 TE MANIA BERKLEY B1^{PV}
 RENNYLEA H367^{SV}
 RENNYLEA F228[#]

MATAURI REALITY 839[#]
 CLUNIE RANGE LEGEND L348^{PV}
 ABERDEEN ESTATE LAURA J81^{PV}
DAM: THCP59 CLUDEN NEWRY P59[#]
 CARABAR DOCKLANDS D62^{PV}
 CLUDEN NEWRY ALISON K147[#]
 CLUDEN NEWRY ALISON B063[#]

| Mid December 2024 TransTasman Angus Cattle Evaluation | | | | | | | | |
|---|---------------------|------------------------|-------------------------|-------------------|---------------------|---------------------|---------------------|----------|
| TACE | Calving Ease Direct | Calving Ease Daughters | Gestation Length (days) | Birth Weight (kg) | 200 Day Weight (kg) | 400 Day Weight (kg) | 600 Day Weight (kg) | MCW (kg) |
| EBV | -0.8 | -0.9 | -5.0 | +6.0 | +60 | +102 | +129 | +136 |
| ACC | 66% | 58% | 83% | 82% | 83% | 81% | 82% | 78% |
| Milk (kg) | Scrotal Size (cm) | CWT (kg) | EMA (sq cm) | Rib Fat (mm) | Rump Fat (mm) | RBV % | IMF % | Docility |
| +9 | +2.1 | +80 | +5.8 | -0.7 | -4.3 | +1.0 | -0.3 | +1 |
| 75% | 79% | 70% | 70% | 70% | 71% | 63% | 74% | 77% |

Traits Observed: GL,BWT,200WT,600WT,SC,Scan(EMA,Rib,Rump,IMF),Genomics

Black Angus Nationwide U205 could be the most powerful bull in this sale. His brother topped our 2024 SA sale selling to Mark and Leah Jacob for \$35,000. U205's sire, Rennyalea Nationwide was selected for AI use at Glatz Black Angus as a proven and sound 6yo. U205 ranks in the Top 14-28% of the Angus breed for 200 Growth, 400 Growth, 600 Growth and Retail Beef Yield.

DOCILITY ST★R RATING

★★★★

KPI
131

Scrotal Circumference: 42cm Age: 22 months

Purchaser..... \$.....

20% 50%



GLATZ BLACK ANGUS



SOUTH AUSTRALIA

→ **SA BEEF WEEK**

TUESDAY 11TH FEB 2025

ON PROPERTY - AVENUE

→ **BULL SALE**

WEDNESDAY 19TH FEB 2025, 11AM

ON PROPERTY - AVENUE

2135 AVENUE RANGE RD,

AVENUE RANGE SA

VICTORIA

→ **VIC BEEF WEEK**

WEDNESDAY 29TH JAN 2025

ON PROPERTY - COROONA

→ **BULL SALE**

MONDAY 24TH FEB 2025, 11AM

ON PROPERTY - COROONA

299 CAROONA LANE,

BRANXHOLMEVIC

CONTACT BEN & SAMANTHA GLATZ

Mobile: 0407 712 455

Email: glatzblackangus@gmail.com

glatzblackangus.com



| | | |
|---|--|---|
| Lot 6 | BLACK ANGUS HARRY TAYLOR U52[#] | Ident: SJQ23U52 |
| Born: 8/4/2023 | Genetic Status: AMFU,CAFU,DDFU,NHFU | Mating Type: AI Registration Level: APR |
| KM BROKEN BOW 002 ^{PV} VARILEK GEDDES 7068 ^{PV} VARILEK GOLDIE 5051 506 [#] | | MILLAH MURRAH KLOONEY K42 ^{PV} MANDAYEN CLOONEY P555 ^{SV} FORRES ROYAL-LINE B28 ^{PV} |
| SIRE: SJQR605 BLACK ANGUS GEDDES R605^{PV} | DAM: SJQ21S160 BLACK ANGUS MIEGUNYAH S160[#] | |
| LAWSONS INCREDIBLE H803 ^{PV} LAWSONS INCREDIBLE L882 ^E LAWSONS REGENT J1425 ^{SV} | TEXAS HOLD 'EM H126 ^{PV} BLACK ANGUS MIEGUNYAH M103 [#] BLACK ANGUS MIEGUNYAH G67 [#] | |

| Mid December 2024 TransTasman Angus Cattle Evaluation | | | | | | | | |
|---|---------------------|------------------------|-------------------------|-------------------|---------------------|---------------------|---------------------|-------------|
| TACE | Calving Ease Direct | Calving Ease Daughters | Gestation Length (days) | Birth Weight (kg) | 200 Day Weight (kg) | 400 Day Weight (kg) | 600 Day Weight (kg) | MCW (kg) |
| EBV | +5.2 | +2.5 | -5.2 | +4.5 | +57 | +107 | +144 | +134 |
| ACC | 53% | 44% | 81% | 72% | 68% | 66% | 72% | 65% |
| Milk (kg) | Scrotal Size (cm) | CWT (kg) | EMA (sq cm) | Rib Fat (mm) | Rump Fat (mm) | RBV % | IMF % | Docility |
| +22 | +2.5 | +84 | +6.0 | -3.3 | -3.1 | +0.9 | +1.4 | +18 |
| 57% | 71% | 58% | 55% | 57% | 57% | 51% | 60% | 59% |

Traits Observed: GL,BWT,200WT,600WT,SC,Scan(EMA,Rib,Rump,IMF),DOC

Black Angus Harry Taylor U52 is from a first calving 2yo heifer and the first son to sell from our \$38,000 sale topper in 2022. Black Angus Geddes R605 progeny deliver Calving Ease and High Growth in above average frame size. Harry Taylor U52 ranks in the Top 9-14% of the Angus breed for 200 Growth and 400 Growth. Top 12% for Carcase Weight. Top 17% for Milk. Plus 5 Calving Ease Direct.

DOCILITY ST★R RATING

179

Scrotal Circumference: 41cm **Age:** 21.5 months

Purchaser..... \$.....

| | | |
|---|---|---|
| Lot 7 | BLACK ANGUS WATTLE STREET U303[#] | Ident: SJQ23U303 |
| Born: 28/4/2023 | Genetic Status: AMFU,CAFU,DDFU,NHFU | Mating Type: Natural Registration Level: HBR |
| EF COMPLEMENT 8088 ^{PV} BLACK ANGUS COMPLEMENT L51 ^{SV} BLACK ANGUS EXPO J119 [#] | | TC FRANKLIN 619 [#] WATTLETOP FRANKLIN G188 ^{SV} WATTLETOP BARUNAH E295 ^{SV} |
| SIRE: SJQQ127 BLACK ANGUS WATTLE STREET Q127^{SV} | DAM: THCP39 CLUDEN NEWRY P39[#] | |
| WITHERSWOOD PERFORMER E49 ^{PV} BLACK ANGUS MST K53 [#] BLACK ANGUS CLEOPATRA D25 [#] | BASIN PAYWEIGHT 1682 ^{PV} CLUDEN NEWRY M23 ^{PV} CLUDEN NEWRY CLYPTA K24 ^{SV} | |

| Mid December 2024 TransTasman Angus Cattle Evaluation | | | | | | | | |
|---|---------------------|------------------------|-------------------------|-------------------|---------------------|---------------------|---------------------|-------------|
| TACE | Calving Ease Direct | Calving Ease Daughters | Gestation Length (days) | Birth Weight (kg) | 200 Day Weight (kg) | 400 Day Weight (kg) | 600 Day Weight (kg) | MCW (kg) |
| EBV | -3.3 | +2.3 | -1.9 | +5.3 | +65 | +110 | +144 | +126 |
| ACC | 56% | 47% | 67% | 68% | 69% | 67% | 69% | 67% |
| Milk (kg) | Scrotal Size (cm) | CWT (kg) | EMA (sq cm) | Rib Fat (mm) | Rump Fat (mm) | RBV % | IMF % | Docility |
| +18 | +3.0 | +93 | +5.8 | -0.2 | -0.3 | +0.3 | +0.3 | +40 |
| 60% | 64% | 59% | 59% | 61% | 61% | 54% | 62% | 62% |

Traits Observed: BWT,200WT,600WT,SC,Scan(EMA,Rib,Rump,IMF),DOC

Twin. #2 ranked KPI bull in the sale. Black Angus Wattle Street U303 can boast Straight 5's on all Docility recordings! Equal highest Scrotal bull in the sale. His sire, Black Angus Wattle Street Q127's first sons averaged \$24,250 in our 2023 SA Sale. Proper cattle for proper cattle breeders. U303 ranks in the Top 5% of the Angus breed for 200 Growth, 400 Growth and 600 Growth. Top 4% for Docility and Carcase Weight. Top 11% for Feed Efficiency.

DOCILITY ST★R RATING

200

Scrotal Circumference: 46cm **Age:** 21 months

Purchaser..... \$.....

20% 50%

| | | |
|---|---|---|
| Lot 8 | BLACK ANGUS HARRY TAYLOR U58[#] | Ident: SJQ23U58 |
| Born: 9/4/2023 | Genetic Status: AMFU,CAFU,DDF,NHFU | Mating Type: AI Registration Level: HBR |
| KM BROKEN BOW 002 ^{PV} VARILEK GEDDES 7068 ^{PV} VARILEK GOLDIE 5051 506 [#] | | BLACK ANGUS COMPLEMENT L51 ^{SV} BLACK ANGUS WATTLE STREET Q127 ^{SV} BLACK ANGUS MST K53 [#] |
| SIRE: SJQR605 BLACK ANGUS GEDDES R605^{PV} | | DAM: SJQ21S92 BLACK ANGUS WHISTLING BIRD S92[#] |
| LAWSONS INCREDIBLE H803 ^{PV} LAWSONS INCREDIBLE L882 ^E LAWSONS REGENT J1425 ^{SV} | | WILLOW FIELDS HANS H37 ^{PV} BLACK ANGUS WHISTLING BIRD P81 [#] BLACK ANGUS WHISTLING BIRD M1 [#] |

| Mid December 2024 TransTasman Angus Cattle Evaluation | | | | | | | | |
|---|---------------------|------------------------|-------------------------|-------------------|---------------------|---------------------|---------------------|-------------|
| TACE | Calving Ease Direct | Calving Ease Daughters | Gestation Length (days) | Birth Weight (kg) | 200 Day Weight (kg) | 400 Day Weight (kg) | 600 Day Weight (kg) | MCW (kg) |
| EBV | +3.9 | +2.4 | -2.3 | +3.1 | +48 | +91 | +121 | +104 |
| ACC | 53% | 43% | 81% | 71% | 67% | 68% | 66% | 63% |
| Milk (kg) | Scrotal Size (cm) | CWT (kg) | EMA (sq cm) | Rib Fat (mm) | Rump Fat (mm) | RBV % | IMF % | Docility |
| +23 | +2.1 | +71 | +2.7 | -2.0 | -0.9 | +0.1 | +2.2 | +26 |
| 56% | 71% | 56% | 55% | 57% | 57% | 50% | 60% | 58% |

Traits Observed: GL,BWT,200WT,400WT,SC,Scan(EMA,Rib,Rump,IMF),DOC

From a first calving 2yo heifer. Harry Taylor U58 is exactly how his sire stamps them - plenty of Frame, Calving Ease and Growth. He ranks in the Top 11% of the Angus breed for Milk. Suitable for heifer joining.

DOCILITY ST★R RATING

★ ★ ★ ★

143

Scrotal Circumference: 40.5cm **Age:** 21.5 months

Purchaser..... \$.....

| | | |
|---|---|--|
| Lot 9 | BLACK ANGUS BLOCKBUSTER U2[#] | Ident: SJQ23U2 |
| Born: 30/3/2023 | Genetic Status: AMFU,CAFU,DDF,NHFU | Mating Type: AI Registration Level: HBR |
| MATAURI REALITY 839 [#] MILWILLAH REALITY K12 ^{PV} MILWILLAH BARUNAH H8 ^{SV} | | KM BROKEN BOW 002 ^{PV} VARILEK GEDDES 7068 ^{PV} VARILEK GOLDIE 5051 506 [#] |
| SIRE: NENM367 KAROO MAIN EVENT M367^{SV} | | DAM: SJQ21S8 BLACK ANGUS IRIS S8[#] |
| ARDROSSAN EQUATOR A241 ^{PV} KAROO DORIS G34 [#] KAROO DORIS Y137 ^{SV} | | LCC NEW STANDARD ^{SV} BLACK ANGUS NS IRIS K57 [#] BLACK ANGUS IRIS H159 [#] |

| Mid December 2024 TransTasman Angus Cattle Evaluation | | | | | | | | |
|---|---------------------|------------------------|-------------------------|-------------------|---------------------|---------------------|---------------------|------------|
| TACE | Calving Ease Direct | Calving Ease Daughters | Gestation Length (days) | Birth Weight (kg) | 200 Day Weight (kg) | 400 Day Weight (kg) | 600 Day Weight (kg) | MCW (kg) |
| EBV | +6.3 | +5.1 | -9.5 | +2.3 | +44 | +85 | +111 | +89 |
| ACC | 57% | 47% | 83% | 73% | 69% | 70% | 69% | 66% |
| Milk (kg) | Scrotal Size (cm) | CWT (kg) | EMA (sq cm) | Rib Fat (mm) | Rump Fat (mm) | RBV % | IMF % | Docility |
| +19 | +1.4 | +58 | +3.3 | +1.6 | +3.6 | -0.3 | +2.1 | +17 |
| 61% | 73% | 59% | 59% | 60% | 60% | 55% | 62% | 63% |

Traits Observed: GL,BWT,200WT,400WT,SC,Scan(EMA,Rib,Rump,IMF),DOC

The only Karoo Main Event son in this sale. Main Event is a proven breed elite sire for Foot Structure, Positive Fat and Calving Ease. Black Angus Blockbuster U2 is from a first calving 2yo heifer and is a sleep easy heifer joining option. He ranks in the Top 3% of the Angus breed for Short Gestation Length. Top 6% for Positive Fat. Top 20% for Calving Ease Direct.

DOCILITY ST★R RATING

★ ★ ★ ★

136

Scrotal Circumference: 40cm **Age:** 22 months

Purchaser..... \$.....

20% 50%

Lot 10 BLACK ANGUS LUMBERJACK U89# Ident: **SJQ23U89**
 Born: 7/5/2023 Genetic Status: AMFU,CAFU,DDFU,NHFU Mating Type: Natural Registration Level: HBR

G A R PROPHET^{SV} MATAURI REALITY 839#
 BALDRIDGE BEAST MODE B074^{PV} GLENOCH-JK MAKAHU M602^{SV}
 BALDRIDGE ISABEL Y69# GLENOCH-JK ANN K615^{SV}
SIRE: WKGQ48 DIAMOND ONE BEAST MODE Q48^{SV} **DAM: SJQR20 BLACK ANGUS JENNIFER R20#**
 AYRVALE BARTEL E7^{PV} BOORAGUL WT458N K11^{SV}
 DIAMOND TREE BARTEL L60# BLACK ANGUS JENNIFER P289#
 DIAMOND TREE HOOVER DAM J88# BLACK ANGUS JENNIFER L211#

| Mid December 2024 TransTasman Angus Cattle Evaluation | | | | | | | | |
|---|---------------------|------------------------|-------------------------|-------------------|---------------------|---------------------|---------------------|----------|
| TACE | Calving Ease Direct | Calving Ease Daughters | Gestation Length (days) | Birth Weight (kg) | 200 Day Weight (kg) | 400 Day Weight (kg) | 600 Day Weight (kg) | MCW (kg) |
| EBV | -0.3 | +3.0 | -3.5 | +4.6 | +55 | +91 | +121 | +111 |
| ACC | 57% | 48% | 67% | 72% | 69% | 67% | 73% | 66% |
| Milk (kg) | Scrotal Size (cm) | CWT (kg) | EMA (sq cm) | Rib Fat (mm) | Rump Fat (mm) | RBV % | IMF % | Docility |
| +21 | +2.2 | +67 | +5.7 | -1.8 | -3.9 | +0.8 | +3.0 | +12 |
| 58% | 72% | 59% | 58% | 59% | 59% | 54% | 61% | 61% |

Traits Observed: BWT,200WT,600WT,SC,Scan(EMA,Rib,Rump,IMF),DOC

The first son of our WA bred Beast Mode Q48 in this sale. Q48 expresses more muscle and robustness than a typical higher IMF sire. He has been rock solid over heifers and cows at Glatz Black Angus. Lumberjack U89 sits in the Top 22% of the Angus breed for Milk. Top 32% for IMF. 4.5 Star Docility Rating.

DOCILITY STAR RATING

★★★★☆

110

Scrotal Circumference: 39cm Age: 20.5 months

Purchaser..... \$.....

Lot 11 BLACK ANGUS LUMBERJACK U104# Ident: **SJQ23U104**
 Born: 1/6/2023 Genetic Status: AMFU,CAFU,DDFU,NHFU Mating Type: Natural Registration Level: HBR

G A R PROPHET^{SV} TE MANIA EMPEROR E343^{PV}
 BALDRIDGE BEAST MODE B074^{PV} STORTH OAKS JACK J7^{SV}
 BALDRIDGE ISABEL Y69# STORTH OAKS G183#
SIRE: WKGQ48 DIAMOND ONE BEAST MODE Q48^{SV} **DAM: SJQQ45 BLACK ANGUS ADELAIDE Q45#**
 AYRVALE BARTEL E7^{PV} LCC NEW STANDARD^{SV}
 DIAMOND TREE BARTEL L60# BLACK ANGUS ADELAIDE K109#
 DIAMOND TREE HOOVER DAM J88# BLACK ANGUS ADELAIDE D82#

| Mid December 2024 TransTasman Angus Cattle Evaluation | | | | | | | | |
|---|---------------------|------------------------|-------------------------|-------------------|---------------------|---------------------|---------------------|----------|
| TACE | Calving Ease Direct | Calving Ease Daughters | Gestation Length (days) | Birth Weight (kg) | 200 Day Weight (kg) | 400 Day Weight (kg) | 600 Day Weight (kg) | MCW (kg) |
| EBV | +3.9 | +7.4 | -3.6 | +2.7 | +53 | +92 | +114 | +99 |
| ACC | 56% | 48% | 67% | 72% | 69% | 68% | 73% | 66% |
| Milk (kg) | Scrotal Size (cm) | CWT (kg) | EMA (sq cm) | Rib Fat (mm) | Rump Fat (mm) | RBV % | IMF % | Docility |
| +20 | +2.1 | +62 | +5.2 | -2.1 | -4.1 | +0.5 | +3.6 | +14 |
| 59% | 72% | 59% | 58% | 60% | 60% | 54% | 62% | 61% |

Traits Observed: BWT,200WT,600WT,SC,Scan(EMA,Rib,Rump,IMF),DOC

Lumberjack U104 is suitable for heifer joining. His Grand dam is due on her 10th natural calf this year. His great grand dam produced 10 natural calves. U104 ranks in the Top 11% of the Angus breed for Calving Ease Daughters. Top 21% of the breed for IMF. Top 26% for Milk. 4.5 Docility Star Rating.

DOCILITY STAR RATING

★★★★☆

130


Scrotal Circumference: 39cm Age: 20 months

Purchaser..... \$.....

20% 50%

Lot 12 BLACK ANGUS JONAH LOMU U339# **Ident: SJQ23U339**
Born: 3/6/2023 **Genetic Status:** AMFU,CAFU,DDFU,NHFU **Mating Type:** Natural **Registration Level:** APR

TE MANIA EMPEROR E343^{PV} ARDROSSAN ADMIRAL A2^{PV}
 STORTH OAKS JACK J7^{SV} ARDROSSAN ADMIRAL C57^{SV}
 STORTH OAKS G183[#] ARDROSSAN PRINCESS W38^{PV}
SIRE: SJQP229 BLACK ANGUS JONAH LOMU P229^{SV} **DAM: SJQM191 BLACK ANGUS JENNIFER M191[#]**
 EF COMPLEMENT 8088^{PV} BLACK ANGUS NEWSLINE B37^{SV}
 BLACK ANGUS DREAM L47[#] BLACK ANGUS JENNIFER E141[#]
 BLACK ANGUS DREAM J79[#] BLACK ANGUS CHAMPAGNE V22[#]

| Mid December 2024 TransTasman Angus Cattle Evaluation | | | | | | | | |
|---|---------------------|------------------------|-------------------------|-------------------|---------------------|---------------------|---------------------|-------------|
| TACE  | Calving Ease Direct | Calving Ease Daughters | Gestation Length (days) | Birth Weight (kg) | 200 Day Weight (kg) | 400 Day Weight (kg) | 600 Day Weight (kg) | MCW (kg) |
| EBV | -0.1 | +0.5 | -2.2 | +5.2 | +54 | +96 | +124 | +105 |
| ACC | 55% | 46% | 63% | 73% | 69% | 66% | 70% | 64% |
| Milk (kg) | Scrotal Size (cm) | CWT (kg) | EMA (sq cm) | Rib Fat (mm) | Rump Fat (mm) | RBV % | IMF % | Docility |
| +16 | +3.6 | +72 | +6.1 | -1.3 | -2.0 | +0.7 | +1.6 | +30 |
| 60% | 67% | 59% | 58% | 60% | 60% | 54% | 61% | 62% |

Traits Observed: BWT,200WT,600WT,SC,Scan(EMA,Rib,Rump,IMF),DOC

June drop. Jonah Lomu U339's dam is due on her 7th natural calf this year. Her only other son was the heaviest bull in our 2021 sale team. U339 Ranks in the Top 10% of the Angus breed for Scrotal Size. Top 16% for Docility. Equal largest Scrotal in the sale. 4.5 Star Docility Rating.

DOCILITY ST★R RATING




167

Scrotal Circumference: 46cm **Age:** 20 months

Purchaser..... \$.....

Lot 13 BLACK ANGUS JONAH LOMU U313# **Ident: SJQ23U313**
Born: 5/5/2023 **Genetic Status:** AMFU,CAFU,DDFU,NHFU **Mating Type:** Natural **Registration Level:** APR

TE MANIA EMPEROR E343^{PV} STONEY POINT EQUATION X66[#]
 STORTH OAKS JACK J7^{SV} GALWAY EQUATION E16^{SV}
 STORTH OAKS G183[#] GALWAY SALLY A48[#]
SIRE: SJQP229 BLACK ANGUS JONAH LOMU P229^{SV} **DAM: SJQJ271 BLACK ANGUS SCOTCH J271[#]**
 EF COMPLEMENT 8088^{PV} BLACK ANGUS NEWSLINE B37^{SV}
 BLACK ANGUS DREAM L47[#] BLACK ANGUS SCOTCH F145[#]
 BLACK ANGUS DREAM J79[#] BLACK ANGUS SCOTCH B67[#]

| Mid December 2024 TransTasman Angus Cattle Evaluation | | | | | | | | |
|---|---------------------|------------------------|-------------------------|-------------------|---------------------|---------------------|---------------------|-------------|
| TACE  | Calving Ease Direct | Calving Ease Daughters | Gestation Length (days) | Birth Weight (kg) | 200 Day Weight (kg) | 400 Day Weight (kg) | 600 Day Weight (kg) | MCW (kg) |
| EBV | +1.5 | +0.3 | -3.3 | +5.1 | +55 | +93 | +125 | +108 |
| ACC | 55% | 47% | 65% | 73% | 69% | 68% | 68% | 66% |
| Milk (kg) | Scrotal Size (cm) | CWT (kg) | EMA (sq cm) | Rib Fat (mm) | Rump Fat (mm) | RBV % | IMF % | Docility |
| +16 | +3.6 | +72 | +5.4 | -0.9 | -0.8 | +0.4 | +1.2 | +17 |
| 62% | 65% | 60% | 59% | 61% | 61% | 56% | 62% | 63% |

Traits Observed: BWT,200WT,600WT,SC,Scan(EMA,Rib,Rump,IMF)

Jonah Lomu U313 is from a special dam at Black Angus. She is due on her 13th natural calf in 2025 - that's production. Her 6 sons to date have all made the sale. This fellow is nice on the eye and ranks in the Top 10% of the Angus breed for Scrotal Size.

DOCILITY ST★R RATING



146

Scrotal Circumference: 45cm **Age:** 21 months

Purchaser..... \$.....

20% 50%

Lot 14 BLACK ANGUS MAKAHU U299# **Ident: SJQ23U299**
Born: 23/4/2023 **Genetic Status:** AMFU,CAFU,DDFU,NHFU **Mating Type:** Natural **Registration Level:** HBR

SCHURRTOP REALITY X723#
 MATAURI REALITY 839#
 MATAURI 06663#
SIRE: QLLM602 GLENOCH-JK MAKAHU M602^{SV}
 GLENOCH HINMAN H221^{SV}
 GLENOCH-JK ANN K615^{SV}
 GLENOCH-JK ANN F606^{SV}

WATTLETOP SITZ 458N E111^{SV}
 BOORAGUL WT458N K11^{SV}
 BOORAGUL GLAZE G140#
DAM: SJQN157 BLACK ANGUS DREAM N157#
 EF COMPLEMENT 8088^{PV}
 BLACK ANGUS DREAM L47#
 BLACK ANGUS DREAM J79#

| Mid December 2024 TransTasman Angus Cattle Evaluation | | | | | | | | |
|---|---------------------|------------------------|-------------------------|-------------------|---------------------|---------------------|---------------------|----------|
| TACE | Calving Ease Direct | Calving Ease Daughters | Gestation Length (days) | Birth Weight (kg) | 200 Day Weight (kg) | 400 Day Weight (kg) | 600 Day Weight (kg) | MCW (kg) |
| EBV | +5.2 | +4.1 | -6.7 | +2.5 | +46 | +88 | +114 | +101 |
| ACC | 61% | 54% | 69% | 70% | 71% | 69% | 71% | 68% |
| Milk (kg) | Scrotal Size (cm) | CWT (kg) | EMA (sq cm) | Rib Fat (mm) | Rump Fat (mm) | RBV % | IMF % | Docility |
| +22 | +3.5 | +64 | +7.1 | +0.0 | -1.9 | +0.5 | +2.2 | +27 |
| 65% | 66% | 62% | 61% | 63% | 63% | 58% | 64% | 66% |

Traits Observed: BWT,200WT,600WT,Scan(EMA,Rib,Rump,IMF),DOC

Twin. #7 ranked KPI bull in the sale. Makahu U299 is from our outstanding Black Angus Dream cow family. His dam is due on her 7th natural calf. His grand dam produced our herd sire - Black Angus Jonah Lomu P229. His great grand dam holds legend status and is due on her 12th natural calf. U299 ranks in the Top 12-25% of the Angus breed for Calving Ease Direct, Short Gestation Length, Low Birth Weight, Milk and Scrotal Size. Balanced performance you can build a herd on. 4.5 Star Docility Rating.

DOCILITY ST★R RATING

★★★★★

180

Scrotal Circumference: 40.5cm **Age:** 21 months

Purchaser..... \$.....

Lot 15 BLACK ANGUS DUSTY MARTIN U77# **Ident: SJQ23U77**
Born: 24/4/2023 **Genetic Status:** AMFU,CAFU,DDFU,NHFU **Mating Type:** Natural **Registration Level:** APR

G A R PROPHET^{SV}
 CLUNES CROSSING DUSTY M13^{PV}
 CLUNES CROSSING GLORIOUS G1^{SV}
SIRE: SJQR608 BLACK ANGUS DUSTY MARTIN R608^{PV}
 G A R ANTICIPATION#
 YOOHAMURRA L81^{SV}
 LAWSONS DINKY DI E1121^{SV}

MATAURI REALITY 839#
 GLENOCH-JK MAKAHU M602^{SV}
 GLENOCH-JK ANN K615^{SV}
DAM: SJQ21S112 BLACK ANGUS ENTERPRISE S112#
 BLACK ANGUS EQUATOR A241 H11^{SV}
 BLACK ANGUS ENTERPRISE L59#
 BLACK ANGUS ENTERPRISE J203#

| Mid December 2024 TransTasman Angus Cattle Evaluation | | | | | | | | |
|---|---------------------|------------------------|-------------------------|-------------------|---------------------|---------------------|---------------------|----------|
| TACE | Calving Ease Direct | Calving Ease Daughters | Gestation Length (days) | Birth Weight (kg) | 200 Day Weight (kg) | 400 Day Weight (kg) | 600 Day Weight (kg) | MCW (kg) |
| EBV | +0.3 | +3.7 | -5.8 | +4.5 | +58 | +94 | +113 | +97 |
| ACC | 55% | 47% | 65% | 72% | 68% | 66% | 72% | 65% |
| Milk (kg) | Scrotal Size (cm) | CWT (kg) | EMA (sq cm) | Rib Fat (mm) | Rump Fat (mm) | RBV % | IMF % | Docility |
| +12 | +2.4 | +63 | +8.8 | -1.9 | -3.1 | +0.9 | +2.0 | +25 |
| 58% | 71% | 58% | 57% | 59% | 59% | 53% | 61% | 60% |

Traits Observed: BWT,200WT,600WT,SC,Scan(EMA,Rib,Rump,IMF),DOC

Dusty Martin U77 is from a first calving 2yo heifer. His grand dam is due on her 8th natural calf. His great grand dam produced 8 smashing progeny. Dusty Martin U77 ranks in the Top 19-31% of the Angus breed for Short Gestation Length, 200 Growth, Days to Calving, EMA, Retail Beef Yield, Feed Efficiency and Docility. 4.5 Star Docility Rating.

DOCILITY ST★R RATING

★★★★★

150

Scrotal Circumference: 39cm **Age:** 21 months

Purchaser..... \$.....

20% 50%

Lot 16 BLACK ANGUS MAKAHU U320# **Ident: SJQ23U320**
 Born: 12/5/2023 Genetic Status: AMFU,CAFU,DDFU,NHFU Mating Type: Natural Registration Level: HBR

SCHURRTOP REALITY X723# WATTLETOP SITZ 458N E1115V
 MATAURI REALITY 839# BOORAGUL WT458N K115V
 MATAURI 06663# BOORAGUL GLAZE G140#
SIRE: QLLM602 GLENOCH-JK MAKAHU M6025V **DAM: SJQP361 BLACK ANGUS EXPO P361#**
 GLENOCH HINMAN H2215V JAROBBE F1195V
 GLENOCH-JK ANN K6155V BLACK ANGUS EXPO L53#
 GLENOCH-JK ANN F6065V BLACK ANGUS C804 EXPO A45#

| Mid December 2024 TransTasman Angus Cattle Evaluation | | | | | | | | |
|---|---------------------|------------------------|-------------------------|-------------------|---------------------|---------------------|---------------------|-------------|
| TACE | Calving Ease Direct | Calving Ease Daughters | Gestation Length (days) | Birth Weight (kg) | 200 Day Weight (kg) | 400 Day Weight (kg) | 600 Day Weight (kg) | MCW (kg) |
| EBV | -0.6 | +0.3 | -5.9 | +5.6 | +53 | +94 | +128 | +128 |
| ACC | 61% | 53% | 68% | 73% | 70% | 69% | 72% | 68% |
| Milk (kg) | Scrotal Size (cm) | CWT (kg) | EMA (sq cm) | Rib Fat (mm) | Rump Fat (mm) | RBV % | IMF % | Dociity |
| +21 | +3.1 | +73 | +4.8 | -1.5 | -3.9 | +0.8 | +0.9 | +27 |
| 64% | 68% | 62% | 61% | 63% | 63% | 58% | 64% | 65% |

Traits Observed: BWT,200WT,600WT,SC,Scan(EMA,Rib,Rump,IMF)

Plenty of Growth and Balanced Performance in Makahu U320. His sire, Glenoch JK Makahu M602 is owned by Black Angus and has been one of the most reliable and highest satisfaction AI sires used throughout Australia in recent years. Makahu U320 ranks in the Top 21-31% of the breed for 600 Growth, Milk, Scrotal Size, Retail Beef Yield, Feed Efficiency and Docility. 4.5 Star Docility Rating.

DOCILITY ST★R RATING

★★★★☆

150

Scrotal Circumference: 40cm **Age: 20.5 months**

Purchaser..... \$.....

Lot 17 BLACK ANGUS MAKAHU U311# **Ident: SJQ23U311**
 Born: 3/5/2023 Genetic Status: AMFU,CAFU,DDFU,NHFU Mating Type: Natural Registration Level: APR

SCHURRTOP REALITY X723# NICHOLS EXTRA K205#
 MATAURI REALITY 839# K C F BENNETT SOUTHSIDE#V
 MATAURI 06663# K C F MISS 208 S11#
SIRE: QLLM602 GLENOCH-JK MAKAHU M6025V **DAM: SJQN67 BLACK ANGUS AMANDA N67#**
 GLENOCH HINMAN H2215V BT RIGHT TIME 24J#
 GLENOCH-JK ANN K6155V BLACK ANGUS AMANDA J85#
 GLENOCH-JK ANN F6065V BLACK ANGUS AMANDA F11#

| Mid December 2024 TransTasman Angus Cattle Evaluation | | | | | | | | |
|---|---------------------|------------------------|-------------------------|-------------------|---------------------|---------------------|---------------------|------------|
| TACE | Calving Ease Direct | Calving Ease Daughters | Gestation Length (days) | Birth Weight (kg) | 200 Day Weight (kg) | 400 Day Weight (kg) | 600 Day Weight (kg) | MCW (kg) |
| EBV | +1.2 | +4.2 | -5.2 | +2.8 | +41 | +77 | +93 | +91 |
| ACC | 62% | 54% | 71% | 75% | 71% | 70% | 73% | 69% |
| Milk (kg) | Scrotal Size (cm) | CWT (kg) | EMA (sq cm) | Rib Fat (mm) | Rump Fat (mm) | RBV % | IMF % | Dociity |
| +20 | +2.8 | +46 | +4.8 | -0.1 | -2.0 | +0.4 | +1.7 | +19 |
| 65% | 72% | 63% | 62% | 64% | 63% | 59% | 65% | 66% |

Traits Observed: BWT,200WT,600WT,SC,Scan(EMA,Rib,Rump,IMF),DOC

Makahu U311 is suitable for heifer joining. He ranks in the Top 19-36% of the Angus breed for Short Gestation Length, Low Birth Weight, Milk, Scrotal Size, Days to Calving and Feed Efficiency. 4.5 Star Docility Rating.

DOCILITY ST★R RATING

★★★★☆

107

Scrotal Circumference: 40cm **Age: 21 months**

Purchaser..... \$.....

20% 50%

Lot 18 BLACK ANGUS ROCKSTAR U126# **Ident: SJQ23U126**
 Born: 16/7/2023 Genetic Status: AMFU,CAFU,DDFU,NHFU Mating Type: Natural Registration Level: HBR

G A R PROPHET^{SV} TE MANIA EMPEROR E343^{PV}
 BALDRIDGE BEAST MODE B074^{PV} STORTH OAKS JACK J7^{SV}
 BALDRIDGE ISABEL Y69# STORTH OAKS G183#
SIRE: SJQR70 BLACK ANGUS BEAST MODE R70^{SV} **DAM: SJQQ32 BLACK ANGUS WAMALTA Q32#**
 BLACK ANGUS BRAMBUIE F197^{SV} BLACK ANGUS DIAMOND TREE G5^{SV}
 BLACK ANGUS EMPRESS J257# BLACK ANGUS WAMALTA J267#
 BLACK ANGUS EMPRESS F171# BLACK ANGUS WAMALTA E31#

| Mid December 2024 TransTasman Angus Cattle Evaluation | | | | | | | | |
|---|---------------------|------------------------|-------------------------|-------------------|---------------------|---------------------|---------------------|----------|
| TACE | Calving Ease Direct | Calving Ease Daughters | Gestation Length (days) | Birth Weight (kg) | 200 Day Weight (kg) | 400 Day Weight (kg) | 600 Day Weight (kg) | MCW (kg) |
| EBV | +2.2 | +3.6 | -3.1 | +5.4 | +63 | +107 | +145 | +136 |
| ACC | 55% | 47% | 66% | 66% | 67% | 65% | 71% | 64% |
| Milk (kg) | Scrotal Size (cm) | CWT (kg) | EMA (sq cm) | Rib Fat (mm) | Rump Fat (mm) | RBV % | IMF % | Dociity |
| +16 | +4.3 | +76 | +3.9 | -1.8 | -3.7 | +0.2 | +1.8 | +29 |
| 58% | 70% | 57% | 57% | 59% | 59% | 53% | 61% | 60% |

Traits Observed: BWT,200WT,600WT,SC,Scan(EMA,Rib,Rump,IMF),DOC

Rockstar U126 is the youngest sire in the catalogue - mid July drop. #3 ranked KPI bull in the sale. An impressive individual, backed up on paper. He ranks in the Top 8-12% of the Angus breed for 200 Growth, 400 Growth and 600 Growth. Top 4% for Scrotal Size. Top 10-20% for Feed Efficiency and Dociity.

DOCILITY ST★R RATING

★★★★

KPI
194

Scrotal Circumference: 41.4cm Age: 18.5 months

Purchaser..... \$.....

Lot 19 BLACK ANGUS MAKAHU U358# **Ident: SJQ23U358**
 Born: 5/7/2023 Genetic Status: AMFU,CAFU,DDF,NHFU Mating Type: Natural Registration Level: APR

SCHURRTOP REALITY X723# TE MANIA EMPEROR E343^{PV}
 MATAURI REALITY 839# STORTH OAKS JACK J7^{SV}
 MATAURI 06663# STORTH OAKS G183#
SIRE: QLLM602 GLENOCH-JK MAKAHU M602^{SV} **DAM: SJQP15 BLACK ANGUS WILCOOLA P15#**
 GLENOCH HINMAN H221^{SV} WILLOW FIELDS HANS H37^{PV}
 GLENOCH-JK ANN K615^{SV} BLACK ANGUS WILCOOLA M227#
 GLENOCH-JK ANN F606^{SV} BLACK ANGUS WILCOOLA K119#

| Mid December 2024 TransTasman Angus Cattle Evaluation | | | | | | | | |
|---|---------------------|------------------------|-------------------------|-------------------|---------------------|---------------------|---------------------|----------|
| TACE | Calving Ease Direct | Calving Ease Daughters | Gestation Length (days) | Birth Weight (kg) | 200 Day Weight (kg) | 400 Day Weight (kg) | 600 Day Weight (kg) | MCW (kg) |
| EBV | +3.7 | +2.8 | -5.7 | +4.7 | +56 | +97 | +126 | +119 |
| ACC | 62% | 54% | 70% | 73% | 70% | 69% | 71% | 68% |
| Milk (kg) | Scrotal Size (cm) | CWT (kg) | EMA (sq cm) | Rib Fat (mm) | Rump Fat (mm) | RBV % | IMF % | Dociity |
| +18 | +2.9 | +70 | +9.2 | -0.1 | -2.7 | +0.6 | +2.1 | +22 |
| 64% | 69% | 62% | 62% | 63% | 63% | 58% | 65% | 65% |

Traits Observed: BWT,200WT,600WT,SC,Scan(EMA,Rib,Rump,IMF)

3rd youngest bull in the sale. A July drop Makahu son suitable for heifer joining. #5 ranked KPI bull in the sale. He ranks in the Top 20-35% of the Angus breed for 200 Growth, 400 Growth, 600 Growth, Scrotal Size, EMA and Feed Efficiency. 4.5 Star Dociity Rating.

DOCILITY ST★R RATING

★★★★★

KPI
189

Scrotal Circumference: 42cm Age: 19 months

Purchaser..... \$.....

20% 50%

Lot 20 BLACK ANGUS DUSTY MARTIN U76# Ident: **SJQ23U76**
 Born: 24/4/2023 Genetic Status: AMFU,CAFU,DDFU,NHFU Mating Type: Natural Registration Level: HBR

G A R PROPHET^{SV} CLUNES CROSSING DUSTY M13^{PV} CLUNES CROSSING GLORIOUS G1^{SV}
 G A R PROPHET^{SV} BALDRIDGE BEAST MODE B074^{PV} BALDRIDGE ISABEL Y69#
SIRE: SJQR608 BLACK ANGUS DUSTY MARTIN R608^{PV} **DAM: SJQ21S13 BLACK ANGUS MELISSA S13#**
 G A R ANTICIPATION# CONNEALY MENTOR 7374^{SV}
 YOOHAMURRA L81^{SV} BLACK ANGUS MELISSA K17#
 LAWSONS DINKY DI E1121^{SV} GRALUNGA MELLISA C68#


Mid December 2024 TransTasman Angus Cattle Evaluation

| TACE | Calving Ease Direct | Calving Ease Daughters | Gestation Length (days) | Birth Weight (kg) | 200 Day Weight (kg) | 400 Day Weight (kg) | 600 Day Weight (kg) | MCW (kg) |
|------------|---------------------|------------------------|-------------------------|-------------------|---------------------|---------------------|---------------------|------------|
| EBV | +3.8 | +5.1 | -6.3 | +3.6 | +62 | +101 | +119 | +93 |
| ACC | 57% | 50% | 66% | 72% | 69% | 67% | 73% | 66% |
| Milk (kg) | Scrotal Size (cm) | CWT (kg) | EMA (sq cm) | Rib Fat (mm) | Rump Fat (mm) | RBV % | IMF % | Docility |
| +10 | +1.9 | +67 | +9.7 | -1.6 | -2.4 | +0.7 | +2.4 | +10 |
| 60% | 73% | 60% | 59% | 60% | 60% | 54% | 63% | 61% |

Traits Observed: BWT,200WT,600WT,SC,Scan(EMA,Rib,Rump,IMF),DOC

Dusty Martin U76 is from a first calving 2yo heifer and is suitable for heifer joining. His grand dam is due on her 9th natural calf and stands within the top echelon of females at Glatz Black Angus. U76 ranks in the Top 17-24% of the Angus breed for Short Gestation Length, 200 Growth, 400 Growth and EMA.

DOCILITY ST★R RATING
 ★ ★ ★ ★
Scrotal Circumference: 39cm **Age: 21 months**



Purchaser..... \$.....

Lot 21 BLACK ANGUS MAKAHU U360# Ident: **SJQ23U360**
 Born: 8/7/2023 Genetic Status: AMFU,CAFU,DDFU,NHFU Mating Type: Natural Registration Level: APR

SCHURRTOP REALITY X723# CONNEALY CAPITALIST 028#
 MATAURI REALITY 839# LD CAPITALIST 316^{PV}
 MATAURI 06663# LD DIXIE ERICA 2053#
SIRE: QLLM602 GLENOCH-JK MAKAHU M602^{SV} **DAM: SJQP21 BLACK ANGUS RACEY P21#**
 GLENOCH HINMAN H221^{SV} GALWAY EQUATION E16^{SV}
 GLENOCH-JK ANN K615^{SV} BLACK ANGUS RACEY J179#
 GLENOCH-JK ANN F606^{SV} BLACK ANGUS RACEY G55#

Mid December 2024 TransTasman Angus Cattle Evaluation

| TACE | Calving Ease Direct | Calving Ease Daughters | Gestation Length (days) | Birth Weight (kg) | 200 Day Weight (kg) | 400 Day Weight (kg) | 600 Day Weight (kg) | MCW (kg) |
|------------|---------------------|------------------------|-------------------------|-------------------|---------------------|---------------------|---------------------|-------------|
| EBV | +0.4 | +2.4 | -3.2 | +5.5 | +55 | +99 | +125 | +119 |
| ACC | 63% | 55% | 68% | 73% | 71% | 69% | 71% | 68% |
| Milk (kg) | Scrotal Size (cm) | CWT (kg) | EMA (sq cm) | Rib Fat (mm) | Rump Fat (mm) | RBV % | IMF % | Docility |
| +19 | +3.5 | +77 | +7.3 | -0.6 | -2.0 | +0.6 | +1.0 | +13 |
| 65% | 69% | 62% | 62% | 63% | 63% | 58% | 64% | 66% |

Traits Observed: BWT,200WT,600WT,SC,Scan(EMA,Rib,Rump,IMF)

2nd youngest bull in the sale - mid July drop. Makahu U360 ranks in the Top 30-35% of the Angus breed for 200 Growth, 400 Growth and 600 Growth. Top 12-37% for EMA, Carcase Weight, Milk and Scrotal Size. 5 Star Docility Rating.

DOCILITY ST★R RATING
 ★ ★ ★ ★ ★
Scrotal Circumference: 41.5cm **Age: 18.5 months**



Purchaser..... \$.....

Lot 22 BLACK ANGUS MAVERICK U307# **Ident: SJQ23U307**
 Born: 1/5/2023 Genetic Status: AMFU,CAFU,DDFU,NHFU Mating Type: Natural Registration Level: HBR

BOOROOMOOKA UNDERTAKEN Y145^{PV} TE MANIA EMPEROR E343^{PV}
 RENNYLEA EDMUND E11^{PV} STORTH OAKS JACK J7^{SV}
 LAWSONS HENRY VIII Y5^{SV} STORTH OAKS G183[#]
SIRE: SYAM07 STONEY POINT MOMENTUM M07^{PV} **DAM: SJQP163 BLACK ANGUS PANDORA P163[#]**
 WMR TIMELESS 458[#] ARDROSSAN ADMIRAL C57^{SV}
 STONEY POINT YANKEE QUEEN K32^{PV} BLACK ANGUS PANDORA L135[#]
 STONEY POINT YANKEE QUEEN F153^{PV} BLACK ANGUS PANDORA F87[#]

| Mid December 2024 TransTasman Angus Cattle Evaluation | | | | | | | | |
|---|---------------------|------------------------|-------------------------|-------------------|---------------------|---------------------|---------------------|----------|
| TACE | Calving Ease Direct | Calving Ease Daughters | Gestation Length (days) | Birth Weight (kg) | 200 Day Weight (kg) | 400 Day Weight (kg) | 600 Day Weight (kg) | MCW (kg) |
| EBV | +1.4 | -0.8 | -5.1 | +4.5 | +50 | +86 | +109 | +83 |
| ACC | 57% | 50% | 69% | 73% | 70% | 68% | 72% | 66% |
| Milk (kg) | Scrotal Size (cm) | CWT (kg) | EMA (sq cm) | Rib Fat (mm) | Rump Fat (mm) | RBV % | IMF % | Docility |
| +18 | +3.3 | +63 | +7.5 | +1.6 | +0.9 | +0.5 | +1.4 | +18 |
| 61% | 69% | 60% | 60% | 62% | 61% | 56% | 63% | 63% |

Traits Observed: BWT,200WT,600WT,SC,Scan(EMA,Rib,Rump,IMF),DOC

Positive Rib Fat. Positive Rump Fat. Maverick U307 also ranks highly within the Angus breed for EMA, Retail Beef Yield, Feed Efficiency and Scrotal Size. His sire, Stoney Point Momentum M07 was recruited to Glatz Black Angus as a proven mature sire for his blend of Calving Ease, High EMA, Positive Fat and Super Sound Foot Structure.

DOCILITY ST*AR RATING



145

Scrotal Circumference: 43cm Age: 21 months

Purchaser..... \$.....

Lot 23 BLACK ANGUS LUMBERJACK U100# **Ident: SJQ23U100**
 Born: 29/5/2023 Genetic Status: AMFU,CAFU,DDFU,NHFU Mating Type: Natural Registration Level: HBR

G A R PROPHET^{SV} STORTH OAKS JACK J7^{SV}
 BALDRIDGE BEAST MODE B074^{PV} BLACK ANGUS JONAH LOMU P229^{SV}
 BALDRIDGE ISABEL Y69[#] BLACK ANGUS DREAM L47[#]
SIRE: WKGQ48 DIAMOND ONE BEAST MODE Q48^{SV} **DAM: SJQ21S114 BLACK ANGUS WAMALTA S114[#]**
 AYRVALE BARTEL E7^{PV} GALWAY EQUATION E16^{SV}
 DIAMOND TREE BARTEL L60[#] BLACK ANGUS WAMALTA J223[#]
 DIAMOND TREE HOOVER DAM J88[#] BLACK ANGUS WAMALTA E57[#]

| Mid December 2024 TransTasman Angus Cattle Evaluation | | | | | | | | |
|---|---------------------|------------------------|-------------------------|-------------------|---------------------|---------------------|---------------------|----------|
| TACE | Calving Ease Direct | Calving Ease Daughters | Gestation Length (days) | Birth Weight (kg) | 200 Day Weight (kg) | 400 Day Weight (kg) | 600 Day Weight (kg) | MCW (kg) |
| EBV | +4.1 | +6.0 | -3.6 | +1.6 | +50 | +84 | +102 | +78 |
| ACC | 55% | 46% | 63% | 72% | 68% | 67% | 73% | 65% |
| Milk (kg) | Scrotal Size (cm) | CWT (kg) | EMA (sq cm) | Rib Fat (mm) | Rump Fat (mm) | RBV % | IMF % | Docility |
| +20 | +2.3 | +57 | +4.3 | +0.3 | +0.0 | +0.1 | +3.1 | +16 |
| 57% | 72% | 58% | 57% | 59% | 59% | 53% | 61% | 61% |

Traits Observed: BWT,200WT,600WT,SC,Scan(EMA,Rib,Rump,IMF),DOC

Lumberjack U100 is from a first calving 2yo heifer and is ideal for heifer joining. He ranks within the Top 9% of the Angus breed for Low Birth Weight. Positive Fat.

DOCILITY ST*AR RATING



124

Scrotal Circumference: 39cm Age: 20 months

Purchaser..... \$.....

20% 50%

Lot 24 BLACK ANGUS ROCKSTAR U106# Ident: **SJQ23U106**
 Born: 5/6/2023 Genetic Status: AMFU,CAFU,DDFU,NHFU Mating Type: Natural Registration Level: APR

G A R PROPHET^{SV} LANDFALL KEYSTONE K132^{PV}
 BALDRIDGE BEAST MODE B074^{PV} LANDFALL KEYSTONE N680^{SV}
 BALDRIDGE ISABEL Y69# LANDFALL PRINCESS K748^{PV}
SIRE: SJQR70 BLACK ANGUS BEAST MODE R70^{SV} **DAM: SJQ21S171 BLACK ANGUS SPRY'S GIFT S171#**
 BLACK ANGUS BRAMBUIE F197^{SV} SPRYS-W GENERAL N521^{PV}
 BLACK ANGUS EMPRESS J257# SPRYS-W GENERALS COOLANA Q536#
 BLACK ANGUS EMPRESS F171# COOLANA L652#

| Mid December 2024 TransTasman Angus Cattle Evaluation | | | | | | | | |
|---|---------------------|------------------------|-------------------------|-------------------|---------------------|---------------------|---------------------|----------|
| TACE | Calving Ease Direct | Calving Ease Daughters | Gestation Length (days) | Birth Weight (kg) | 200 Day Weight (kg) | 400 Day Weight (kg) | 600 Day Weight (kg) | MCW (kg) |
| EBV | +2.9 | +4.2 | -3.6 | +3.6 | +53 | +93 | +118 | +106 |
| ACC | 54% | 46% | 63% | 70% | 67% | 64% | 70% | 63% |
| Milk (kg) | Scrotal Size (cm) | CWT (kg) | EMA (sq cm) | Rib Fat (mm) | Rump Fat (mm) | RBV % | IMF % | Docility |
| +13 | +2.4 | +68 | +6.8 | -0.9 | -2.1 | +1.1 | +1.6 | +31 |
| 56% | 70% | 56% | 55% | 57% | 57% | 50% | 59% | 58% |

Traits Observed: BWT,200WT,600WT,SC,Scan(EMA,Rib,Rump,IMF),DOC

Rockstar U106 is from a first calving 2yo heifer and is ideal for heifer joining. He would make an ideal stablemate for the previous lot. Positive Calving Ease. Low Birth Weight. Sensible Growth. High Docility.

DOCILITY STAR RATING
 ★ ★ ★ ★

KPI
 170

Scrotal Circumference: 38.5cm Age: 20 months

Purchaser..... \$.....

Lot 25 BLACK ANGUS MAVERICK U103# Ident: **SJQ23U103**
 Born: 31/5/2023 Genetic Status: AMFU,CAFU,DDFU,NHFU Mating Type: Natural Registration Level: HBR

BOOROOMOOKA UNDERTAKEN Y145^{PV} BALDRIDGE BEAST MODE B074^{PV}
 RENNYLEA EDMUND E11^{PV} DIAMOND ONE BEAST MODE Q48^{SV}
 LAWSONS HENRY VIII Y5^{SV} DIAMOND TREE BARTEL L60#
SIRE: SYAM07 STONEY POINT MOMENTUM M07^{PV} **DAM: SJQ21S120 BLACK ANGUS WAMALTA S120#**
 WMR TIMELESS 458# BLACK ANGUS COMPLEMENT L51^{SV}
 STONEY POINT YANKEE QUEEN K32^{PV} BLACK ANGUS WAMALTA Q139#
 STONEY POINT YANKEE QUEEN F153^{PV} BLACK ANGUS WAMALTA F107#

| Mid December 2024 TransTasman Angus Cattle Evaluation | | | | | | | | |
|---|---------------------|------------------------|-------------------------|-------------------|---------------------|---------------------|---------------------|----------|
| TACE | Calving Ease Direct | Calving Ease Daughters | Gestation Length (days) | Birth Weight (kg) | 200 Day Weight (kg) | 400 Day Weight (kg) | 600 Day Weight (kg) | MCW (kg) |
| EBV | +3.1 | +2.1 | -4.9 | +2.8 | +48 | +83 | +107 | +74 |
| ACC | 56% | 48% | 65% | 72% | 69% | 67% | 73% | 66% |
| Milk (kg) | Scrotal Size (cm) | CWT (kg) | EMA (sq cm) | Rib Fat (mm) | Rump Fat (mm) | RBV % | IMF % | Docility |
| +21 | +2.0 | +64 | +5.9 | +3.1 | +3.3 | +0.2 | +2.3 | +16 |
| 59% | 72% | 59% | 58% | 59% | 59% | 54% | 61% | 62% |

Traits Observed: BWT,200WT,600WT,SC,Scan(EMA,Rib,Rump,IMF),DOC

Maverick U103 is from a first calving 2yo heifer and is ideal for heifer joining. He would form an ideal trio with the 2 previous lots to join your heifers. Positive Calving Ease. Low Birth Weight. Top 5% of the Angus breed for Positive Fat.

DOCILITY STAR RATING
 ★ ★ ★ ★

KPI
 132

Scrotal Circumference: 37.5cm Age: 20 months

Purchaser..... \$.....

"We sincerely thank our loyal clients,
agents and friends for their continued
support of Glatz Black Angus."

Ben & Samantha Glatz



Ben, Samantha and Jack Glatz, Gordon Wood with Mark and Leah Jacob.

**Black Angus 38 Special T20 – top price of \$35,000 in 2024,
selling to Mark and Leah Jacob.*



Understanding Estimated Breeding Values (EBVs)

Estimated Breeding Values (EBVs) are predictions of an animal's genetic merit, based on available performance data on the individual and its relatives. EBVs are expressed in the units of measurement for each particular trait. They are shown as +ive or -ive differences from the breed base. As the breed base is set to a historical benchmark, the average EBVs of animals in each year drop has changed over time as a result of genetic change within the breed. The current breed averages are shown below. These averages provide a useful benchmark for comparing EBVs for animals.

AUGUST ANGUS BREEDPLAN

| Brd Avg | Calving Ease | | Birth | | Growth | | | Fertility | | | | Carcase | | | | | |
|---------|--------------|--------|-------|------|--------|-----|------|-----------|------|------|-----|---------|------|------|------|------|-----|
| | CEDir | CEDtrs | GL | BW | 200 | 400 | 600 | MCW | Milk | SS | CWT | EMA | RIB | P8 | RBY | IMF | DOC |
| | +2.0 | +3.0 | -4.4 | +4.0 | +51 | +92 | +119 | +102 | +17 | +2.2 | +68 | +6.4 | +0.0 | -0.3 | +0.4 | +2.4 | +21 |

*Breed average represents the average EBV of all 2022 drop Angus and Angus influenced animals analysed in the Mid-December 2024 Trans Tasman Angus BREEDPLAN genetic evaluation.

CALVING EASE TRAITS

Calving Ease (DIR): estimate of genetic differences among animals in the ability of their calves from 2 year old heifers to be born unassisted. Higher, more +ive, Calving Ease (DIR) EBVs are more favourable.

Calving Ease (DTRS): estimates of genetic differences among animals in the ability of their 2 year old daughters to calve without assistance. Higher, more +ive, Calving Ease (DTRS) EBVs are more favourable.

Gestation Length: estimate of genetic differences among animals in the number of days from the date of conception until the calf birth date. Lower, or more -ive, Gestation Length EBVs are generally more favourable.

Birth Wt: estimate of genetic differences between animals in kg of calf birth weight. Calf birth weight is the biggest contributing factor causing calving difficulty in heifers. While low Birth Wt EBVs are favoured for calving ease they are also often associated with lower growth potential. Small, or moderate, Birth Wt EBVs are more favourable.

FERTILITY TRAITS

Days to Calving (DC): estimate of genetic differences among in female fertility, expressed as the number of days from the start of the joining period until subsequent calving. Females with shorter DC EBVs tend to commence cycling earlier after calving and conceive earlier in the joining period. They also tend to attain puberty at a younger age as heifers. Lower, or more -ive, Days to Calving EBVs are more favourable.

Scrotal Size: estimate of the genetic differences among animals in scrotal circumference at 400 days of age. Increased scrotal size is associated with increased semen production in bulls, and earlier age at puberty of bull and heifer progeny. Larger, or more +ive, Scrotal Size EBVs are more favourable.

GROWTH TRAITS

200-Day Wt: estimate of the genetic differences among animals in weight at 200 days of age. This is a measure of an animal's early growth to weaning. It is an important trait for breeders turning off animals as weaners or weaners.

400-Day Wt: estimate of the genetic differences among animals in weight at 400 days of age. This is an important trait for breeders turning off animals as yearlings.

600-Day Wt: estimate of the genetic differences among animals in live-weight at 600 days of age. This is an important trait for breeders targeting the production of animals suited for heavy weight grass finished or grain fed market

MATERNAL TRAITS

Milk: estimate of the genetic differences among animals in milk production potential, expressed through variation in calf growth performance. Larger, more +ive, or moderate, Milk EBVs can be more favourable, depending on the environment.

Mature Cow Wt: estimate of the genetic differences among animals in cow weight at 5 years of age.

CARCASE TRAITS

Carcase Wt: estimate of the genetic differences among animals in hot standard carcase weight at 750 days of age. Larger, more +ive, Carcase Weight EBVs are more favourable.

EMA: estimate of the genetic differences among animals in eye muscle area (cm²) at the 12/13th rib site on a 400kg carcase. Larger, more +ive, EMA EBVs are generally more favourable.

Rib Fat: estimate of the genetic differences among animals in fat depth (mm) at the 12/13th rib site, measures on a 400kg carcase. More positive (+ive), or more negative (-ive), Rib Fat EBVs may be more favourable, depending on your breeding goals.

Rump Fat: estimate of genetic differences among animals in fat depth at the P8 rump site on a standard 400kg carcase. More positive (+ive), or more negative (-ive), Rib Fat EBVs may be more favourable, depending on your breeding goals.

IMF%: estimate of genetic differences among animals in percentage intra-muscular fat (marbling) in a 400kg carcase.

TEMPERAMENT TRAITS

Docility: estimate of genetic differences between animals in temperament. Docility EBVs are expressed as differences in the percentage of progeny that will be scored with acceptable temperament (ie. either "docile" or "restless"). Higher Docility EBVs are more favourable.

TRAITS OBSERVED

Indicates the traits that have been recorded for a particular animal and are contributing to the EBVs that have been calculated. These will appear directly below the table displaying the animals EBVs.

Glantz Black Angus "Vic Cattleman's Bull Sale" EBV Quick Reference Table

| Animal | Calving Ease | | | Birth | | | Growth | | | Maternal | | | Fertility | | | Carcase | | | Temp | |
|--------|--------------|-------|------|-------|------|------|--------|-------|-------|----------|------|------|-----------|------|------|---------|------|------|------|--|
| | CEdR | CEdRs | GL | BWT | 200 | 400 | 600 | MCW | Milk | SS | CWT | EMA | RIB | P8 | RBV | IMF | Doc | | | |
| 1 | SJ023U83 | +1.9 | +2.4 | -2.6 | +4.0 | +5.3 | +9.0 | +11.2 | +9.6 | +1.3 | +3.8 | +6.0 | +9.9 | -1.4 | -2.7 | +0.8 | +1.5 | +3.6 | 163 | |
| 2 | SJ023U88 | +6.8 | +6.4 | -4.4 | +3.1 | +5.1 | +9.0 | +11.8 | +9.1 | +1.5 | +2.9 | +6.3 | +6.8 | +0.7 | +0.1 | +0.2 | +1.8 | +2.8 | 194 | |
| 3 | SJ023U39 | -7.1 | +3.5 | -5.5 | +7.0 | +6.4 | +12.2 | +15.5 | +16.2 | +1.3 | +5.3 | +7.8 | +5.9 | +3.4 | +4.3 | -1.1 | +3.2 | +4.8 | 222 | |
| 4 | SJ023U47 | +5.8 | +6.8 | -3.8 | +3.9 | +5.5 | +10.2 | +12.4 | +11.2 | +1.2 | +3.6 | +6.7 | +4.2 | +1.3 | +3.1 | -0.3 | +1.9 | +9 | 184 | |
| 5 | SJ023U05 | -0.8 | -0.9 | -5.0 | +6.0 | +6.0 | +10.2 | +12.9 | +13.6 | +9 | +2.1 | +8.0 | +5.8 | -0.7 | -4.3 | +1.0 | -0.3 | +1 | 131 | |
| 6 | SJ023U52 | +5.2 | +2.5 | -5.2 | +4.5 | +5.7 | +10.7 | +14.4 | +13.4 | +2.2 | +2.5 | +8.4 | +6.0 | -3.3 | -3.1 | +0.9 | +1.4 | +18 | 179 | |
| 7 | SJ023U03 | -3.3 | +2.3 | -1.9 | +5.3 | +6.5 | +11.0 | +14.4 | +12.6 | +1.8 | +3.0 | +9.3 | +5.8 | -0.2 | -0.3 | +0.3 | +0.3 | +40 | 200 | |
| 8 | SJ023U58 | +3.9 | +2.4 | -2.3 | +3.1 | +4.8 | +9.1 | +12.1 | +10.4 | +2.3 | +2.1 | +7.1 | +2.7 | -2.0 | -0.9 | +0.1 | +2.2 | +26 | 143 | |
| 9 | SJ023U2 | +6.3 | +5.1 | -9.5 | +2.3 | +4.4 | +8.5 | +11.1 | +8.9 | +1.9 | +1.4 | +5.8 | +3.3 | +1.6 | +3.6 | -0.3 | +2.1 | +17 | 136 | |
| 10 | SJ023U89 | -0.3 | +3.0 | -3.5 | +4.6 | +5.5 | +9.1 | +12.1 | +11.1 | +2.1 | +2.2 | +6.7 | +5.7 | -1.8 | -3.9 | +0.8 | +3.0 | +12 | 110 | |
| 11 | SJ023U04 | +3.9 | +7.4 | -3.6 | +2.7 | +5.3 | +8.2 | +11.4 | +9.9 | +2.0 | +2.1 | +6.2 | +5.2 | -2.1 | -4.1 | +0.5 | +3.6 | +14 | 130 | |
| 12 | SJ023U399 | -0.1 | +0.5 | -2.2 | +5.2 | +5.4 | +9.6 | +12.4 | +10.5 | +1.6 | +3.6 | +7.2 | +6.1 | -1.3 | -2.0 | +0.7 | +1.6 | +30 | 167 | |
| 13 | SJ023U313 | +1.5 | +0.3 | -3.3 | +5.1 | +5.5 | +9.3 | +12.5 | +10.8 | +1.6 | +3.6 | +7.2 | +5.4 | -0.9 | -0.8 | +0.4 | +1.2 | +17 | 146 | |
| 14 | SJ023U299 | +5.2 | +4.1 | -6.7 | +2.5 | +4.6 | +8.8 | +11.4 | +10.1 | +2.2 | +3.5 | +6.4 | +7.1 | +0.0 | -1.9 | +0.5 | +2.2 | +27 | 180 | |
| 15 | SJ023U77 | +0.3 | +3.7 | -5.8 | +4.5 | +5.8 | +9.4 | +11.3 | +9.7 | +1.2 | +2.4 | +6.3 | +8.8 | -1.9 | -3.1 | +0.9 | +2.0 | +25 | 150 | |
| 16 | SJ023U320 | -0.6 | +0.3 | -5.9 | +5.6 | +5.3 | +9.4 | +12.8 | +12.8 | +2.1 | +3.1 | +7.3 | +4.8 | -1.5 | -3.9 | +0.8 | +0.9 | +27 | 150 | |
| 17 | SJ023U311 | +1.2 | +4.2 | -5.2 | +2.8 | +4.1 | +7.7 | +9.3 | +9.1 | +2.0 | +2.8 | +4.6 | +4.8 | -0.1 | -2.0 | +0.4 | +1.7 | +19 | 107 | |
| 18 | SJ023U126 | +2.2 | +3.6 | -3.1 | +5.4 | +6.3 | +10.7 | +14.5 | +13.6 | +1.6 | +4.3 | +7.6 | +3.9 | -1.8 | -3.7 | +0.2 | +1.8 | +29 | 194 | |
| 19 | SJ023U358 | +3.7 | +2.8 | -5.7 | +4.7 | +5.6 | +9.7 | +12.6 | +11.9 | +1.8 | +2.9 | +7.0 | +9.2 | -0.1 | -2.7 | +0.6 | +2.1 | +22 | 189 | |
| 20 | SJ023U076 | +3.8 | +5.1 | -6.3 | +3.6 | +6.2 | +10.1 | +11.9 | +9.3 | +1.0 | +1.9 | +6.7 | +9.7 | -1.6 | -2.4 | +0.7 | +2.4 | +10 | 155 | |
| 21 | SJ023U360 | +0.4 | +2.4 | -3.2 | +5.5 | +5.5 | +9.9 | +12.5 | +11.9 | +1.9 | +3.5 | +7.7 | +7.3 | -0.6 | -2.0 | +0.6 | +1.0 | +13 | 154 | |
| 22 | SJ023U307 | +1.4 | -0.8 | -5.1 | +4.5 | +5.0 | +8.6 | +10.9 | +8.3 | +1.8 | +3.3 | +6.3 | +7.5 | +1.6 | +0.9 | +0.5 | +1.4 | +18 | 145 | |
| 23 | SJ023U100 | +4.1 | +6.0 | -3.6 | +1.6 | +5.0 | +8.4 | +10.2 | +7.8 | +2.0 | +2.3 | +5.7 | +4.3 | +0.3 | +0.0 | +0.1 | +3.1 | +16 | 124 | |
| 24 | SJ023U106 | +2.9 | +4.2 | -3.6 | +3.6 | +5.3 | +9.3 | +11.8 | +10.6 | +1.3 | +2.4 | +6.8 | +8.8 | -0.9 | -2.1 | +1.1 | +1.6 | +31 | 170 | |
| 25 | SJ023U103 | +3.1 | +2.1 | -4.9 | +2.8 | +4.8 | +8.3 | +10.7 | +7.4 | +2.1 | +2.0 | +6.4 | +5.9 | +3.1 | +3.3 | +0.2 | +2.3 | +16 | 132 | |





BLACK ANGUS Geddes R605

The impressive performance of Black Angus Geddes R605 progeny has now positioned him within the top percentiles of the Angus breed for Calving Ease, Low Birth Weight, Growth, Milk and IMF. His combination of curve bending performance in such good physical type is rare.

DOCILITY ST★R RATING

“Farm safety is no laughing matter. For your own protection and that of your employees, docility data needs to be a factor in your selection”
Ben Glatz

Glatz Black Angus continues to be an industry leader regarding the assessment of docility. All bulls catalogued for this Spring Cattleman’s Bull Sale are offered with a 1-5 ST★R Rating for docility along with Breedplan Docility EBV’s.

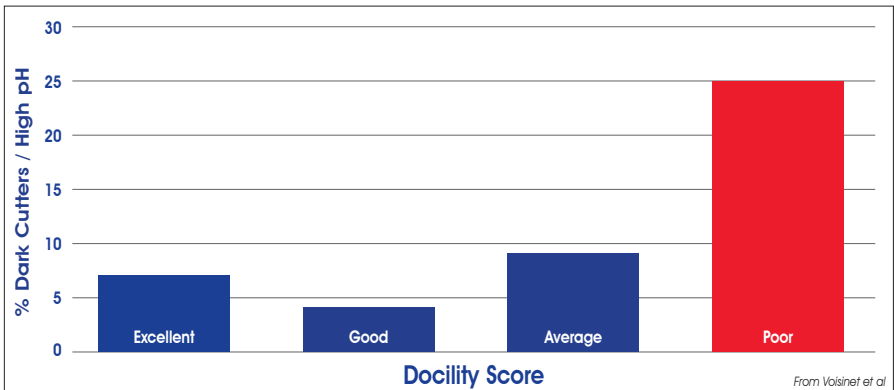
Docility in beef cattle is an extremely heritable trait that is regularly overlooked when making breeding decisions. Cattle that possess unacceptable temperament qualities are not only a danger to handle, but are regularly at the lower end of performance in any environment and are considerably more unreliable in regard to carcass quality.

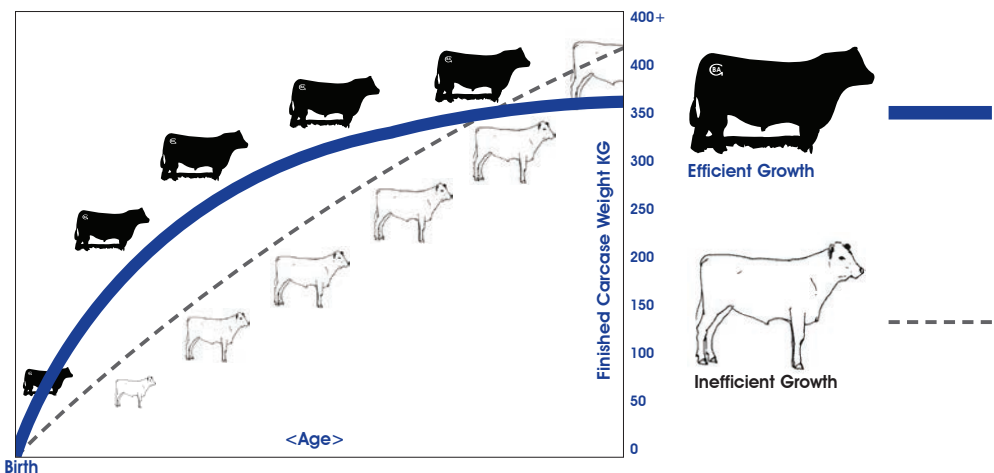
Black Angus remains to be extremely diligent in its genetic selection for bloodlines that do not threaten the general docility of our herd. Unfortunately, there is still a perception in the wider market place that Angus seedstock producers need to pay a little more attention to docility. If this is the case, we as bull providers to the commercial industry must address the situation.

The DOCILITY ST★R RATING for every bull is the result of stringent recording of its behaviour when placed in various pressure situations. The scoring has been conducted a number of times by independent and in herd personnel. All scores for each bull have then been tabulated to determine an average DOCILITY ST★R RATING ranging from 1 – 5 STARS.

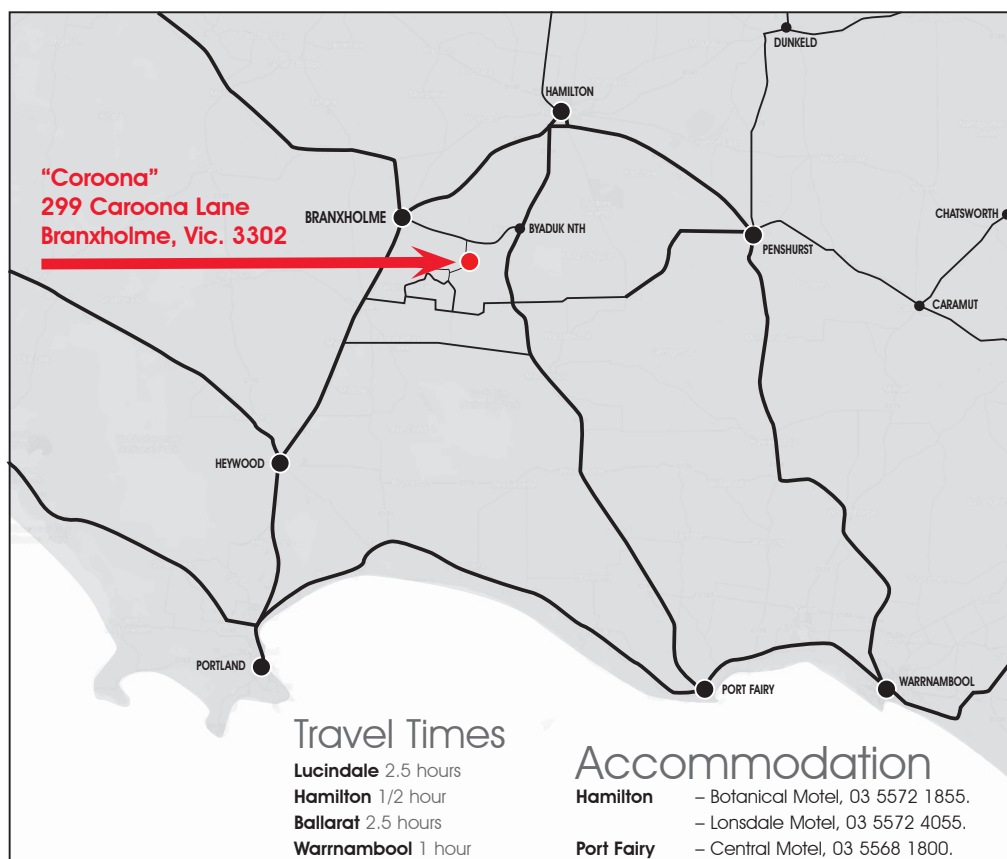
“Please remember that Glatz Black Angus refuses to offer any bull for sale that is considered to display unacceptable temperament characteristics”

- DOCILITY ST★R RATING** *Extremely docile. No movement or stress is expressed when confined.*
 ★ ★ ★ ★ ★
- DOCILITY ST★R RATING** *Shows minimal stress when confined. Minimal intermittent movement.*
 ★ ★ ★ ★
- DOCILITY ST★R RATING** *More regular movement whilst confined. Some tail twitching.*
 ★ ★ ★
- DOCILITY ST★R RATING** *Constant movement whilst confined. Tail twitching. Some jumping in crush.*
 ★ ★
- DOCILITY ST★R RATING** *Snorting, jumping, extremely tense. Rapid exit from crush.*
 ★





The most efficient form of growth — Dimension + Maturity Pattern + Function





Buyers Instruction Slip

PURCHASER DETAILS

Name:.....T/A.....

Mailing Address:.....Postcode:.....

Email:.....UHF:.....

Telephone:.....Mobile:.....

PIC:.....Angus Herd ID:.....Signature:.....

DELIVERY INSTRUCTIONS

Lots Purchased:.....

Insurance: Y N Type of Cover:.....

Property Directions / Roadside Address.....

.....

.....

Map No.:.....Map Reference:.....

Special Instructions:.....

.....

.....

ACCOUNT SETTLEMENT

The name and signature of your agent is required.

Agent:.....

Agent Telephone:.....Signature:.....



Black Angus Beast Mode R70

"Black Angus Beast Mode R70 "Rockstar" was retained for his elite foot structure, powerful phenotype and superb docility."

All in the one brand...

* Problem Free Bulls * Proven Performance * Proven Carcase Quality

