

Glatz Black Angus



Vic Cattleman's Bull Sale

• Wednesday 18th February 2026 at 1pm •
Branxholme, Vic



Ellingson Rangeland

"Ellingson Rangeland represents one of the highest credentialled Angus herds in the US. Ellingson's Angus are renowned for breeding structurally sound bulls ideal for self-replacing cow herds. Rangeland sons excel for Calving Ease, Growth, Structural Soundness and Maternal Traits."



Like us on Facebook
Glatz Black Angus



AuctionsPlus

Bull Videos Available

Glatz Black Angus

Vic Cattleman's Bull Sale

- Wednesday 18th February 2026 at 1pm •
- On Property, Branxholme, Vic

CONTACTS

Ben and Samantha Glatz Mobile 0407 712 455
Email glatzblackangus@gmail.com
Website www.glatzsblackangus.com



SA

Trevor Wiseman	0427 237 369
Gordon Wood	0408 813 215
Richard Miller	0428 849 327
Andrew Wilson	0439 354 228
Mark Scown	0438 878 718
Mitch McAnaney	0455 591 672

Victoria

Sam Savin	0407 939 910
Rob Aldridge	0438 656 528
Peter Godbolt	0457 591 929
Nick Farley	0427 529 335

LMB LIVESTOCK & LAND Pty Ltd 

Bernie Grant	0417 712 144
Hugh Douglas	0438 778 151
Jack Behncke	0438 573 668
Jack Murray	0417 977 993

DISCLAIMER

Whilst all due care and attention has been paid to accuracy in the compilation of this catalogue, neither the vendors nor the selling agents or the representative(s) thereof assume any responsibility whatsoever for the correctness, use or interpretation of the information in this sale catalogue.



Welcome

We invite you to attend our annual Vic Cattleman's Bull Sale for 2026.

Our family graciously acknowledge the support and success of our 2025 autumn and spring bull sales.

Here at Glatz Black Angus, we offer problem-free bulls, brand marketability, consistency, post-sale service and industry-grade acclaim. These are the sound reasons why cattle breeders look to Glatz Black Angus as their preferred genetic partner.

Glatz bulls are generationally bred to be more robust, muscular and profit driven in comparison to some Angus cattle of today. Ideal for self-replacing weaner producers whose calves are finished on grass or short-term grain.

Progeny from Glatz Black Angus bulls reach premium finished carcass weights of 300-350kg in rapid time, on grass or short-term grain. This is what sets Glatz Black Angus bulls apart.

Glatz genetics can advance your self-replacing female herd. Resulting in replacement females that perform and go the distance under heavy stocking rates. Medium framed, easy-keeping and productive. For generations, there's been no compromise made on fertility and production traits, such as scrotal size, milk, and docility. Strict selection for type and structural conformation are non-negotiable.

Our cattle are endorsed by generations of deliberate breeding objectives, driven by Profitability, Predictability and Purpose, resulting in Problem Free Angus bulls.

All Glatz bulls are backed by our own industry leading 3 YEAR Guarantee.

In the instance of bull breakdown or misadventure, we provide immediate service and backup.

Be Angus Be Proud video.



The bulls catalogued for this 2026 Vic Cattleman's Bull Sale represent all that we stand for in breeding profitable Angus cattle. A large proportion of the bulls catalogued are suitable for heifer joining.

We invite your inspection at our on property Vic Beef Week Open Day, from 11am on Sale Day or at any other time that's convenient.

This sale will be interfaced with AuctionsPlus with videos and live online bidding.

We look forward to seeing you at our sale,
Ben and Samantha Glatz.





Sale Information

SALE TIME

The sale is scheduled to commence at 1pm Vic daylight savings time on Wednesday 18th February, 2026. Inspections are welcome from 11am on Sale Day or at any other time that's convenient.

ONLINE BIDDING

The sale will be interfaced with AuctionsPlus. Videos available.

VIC BEEF WEEK

All bulls catalogued for this sale will be available for inspection at Vic Beef Week. Wednesday 4th February 2026, 9am-4pm. On property, 299 Caroon Lane, Branhholme, Vic.

SEMEN TESTING

All bulls in this sale have passed semen motility and third-party semen morphology. For further information contact Dr Brodhi Carracher (Accredited Cattle Vets Australia) (Grampians Vet, Hamilton, Vic.) 0429 015 463.

BULL INSURANCE

Buyers are reminded that any purchases become their responsibility from the fall of the hammer. We strongly recommend that all bulls are comprehensively insured until conclusion of their first mating season.

GENETIC TESTING

All animals catalogued for sale with reasonable likelihood of possessing a copy of the recessive gene for Arthrogryposis Multiplex (AM), Neuropathic Hydrocephalus (NH), Contractural Arachnodactyly (CA) or Developmental Duplication (DD) have been DNA tested to determine their genetic status. The genetic status of every animal is clearly marked in this catalogue.

AMF, NHF, CAF, DDF	= Tested Free.
AMFU, NHFU, CAFU, DDFU	= Free based on pedigree, but untested.

AMC, NHC, CAC, DDC	= Tested Carrier
--------------------	------------------

If you have any questions in relation to genetic testing, please feel free to discuss them with us.

HERD HEALTH

All bulls have been vaccinated and boosted with 7in1 and Pestigard. Furthermore all sale bulls have been treated with Mineral Solutions and will be drenched prior to sale. All breeding age females are vaccinated with Pestigard and 7 in 1 annually.

BIOSECURITY

Glatz Black Angus hold current status of J-BAS 6. Eligible for all states of Australia.

THE GLATZ BLACK ANGUS GUARANTEE

All Glatz Black Angus bulls are backed by our own industry leading 3 YEAR GUARANTEE. In the event of a bull proven to be infertile or incapable of natural service the vendor can either offer a suitable replacement if available or issue a credit for future sales. The credit is a pro-rata value of the bull minus the salvage value. The guarantee can only apply if the bulls incapacity is not caused by injury or disease since taking delivery. Any claim must be accompanied by a relevant veterinary certificate. The vendor retains the right to obtain independent veterinary confirmation of any claim. GBA guarantee immediate service and back up if required.

STOCK HANDLING

Glatz Black Angus cattle are always handled with utmost patience and due care. Mustering is generally undertaken with 4 wheel motorbikes. The bulls have been exposed to working dogs.

SEMEN MARKETING RIGHTS

The semen marketing rights for specific lots in this catalogue are to be retained by the vendor. Alterations to these conditions can be negotiated with the vendor prior to the sale.

DELIVERY

The vendor will personally deliver as many of the sale lots as possible, free of charge, to your property. These arrangements can be made after the sale.

REBATE

A 3% rebate is offered to outside agents introducing buyers to the selling agent prior to the sale and settling within 7 days. Outside agents must attend the sale to be eligible.

PHONE BIDDING

Phone bidding will be available for the sale. For further information contact Trevor Wiseman 0427 237 369 or Bernie Grant 0417 712 144.

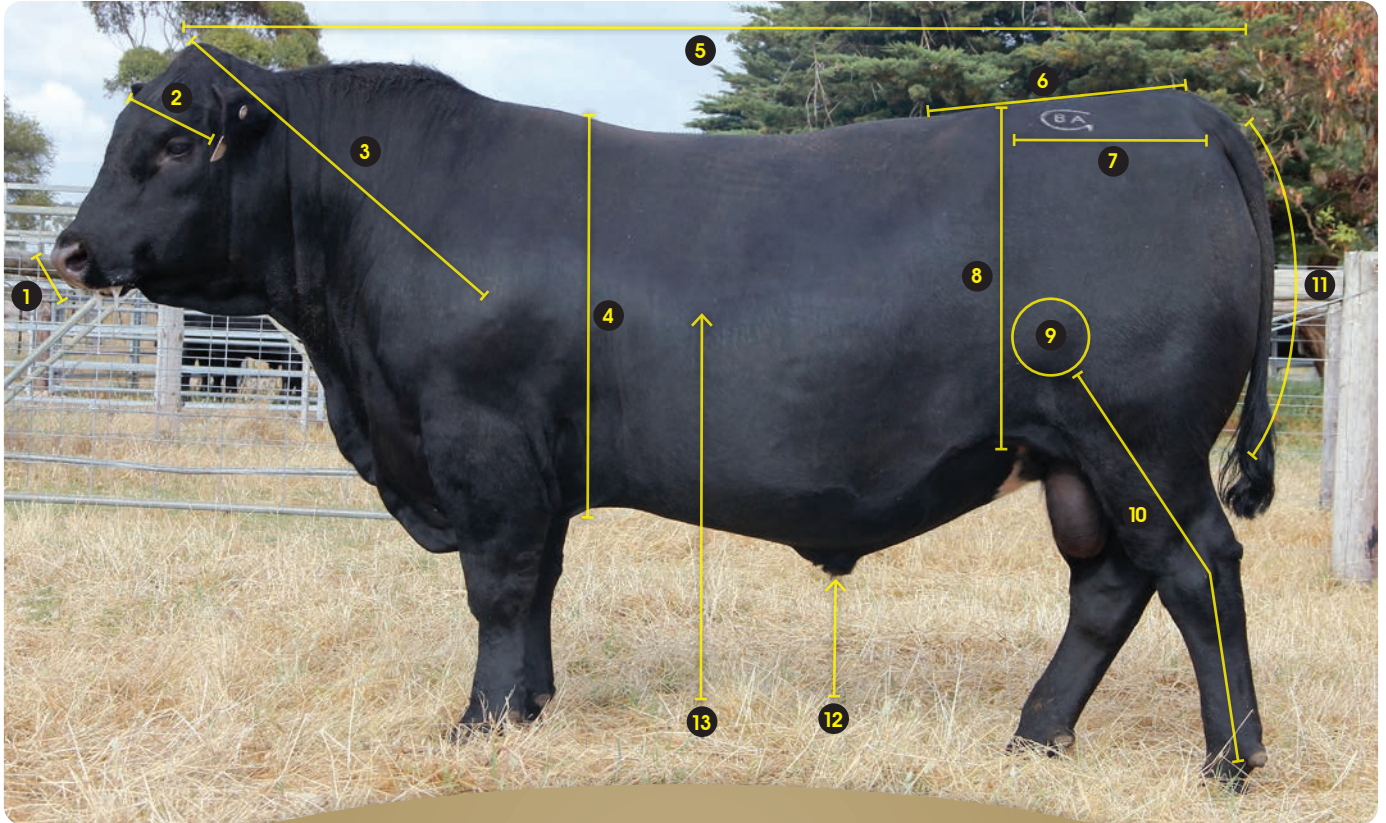
CATERING

Catering and refreshments will be available before and after the sale.

QR CODES

The QR codes in this catalogue can be scanned with your mobile device to play video material of the animal.

“The Ideal Beef Bull”



“A beef animal needs to be sound structured and free in locomotion whilst displaying quality of type. Adhering to these criteria, with some support of performance data (EBV's) when selecting bulls is best practice. Such practice will reward the profitability and sustainability of your beef breeding business.”

1. Muzzle/Jaw

A wide muzzle and prominent bottom jaw are desirable. These are essential for an animal to forage efficiently. The bottom jaw needs to be prominent from a front view.

2. Head

Width across the eyes can indicate the overall dimension of the animal. A long narrow head is generally attached to a tall and narrow animal. A particularly short and wide head is generally attached to a more moderate animal. Hooding over the eye for protection is favorable.

3. Head Carriage

Well-structured and free moving animals naturally carry their head in a somewhat elevated fashion. In a relaxed stance, these animals can comfortably maintain their ear level equal to or above the top of their shoulder.

4. Chest/Girth

The engine room. Most of the major organs are beneath. A full and deep chest/girth is a true indicator of an animal's constitution and it's ability to maintain good condition. The chest/girth should blend into the animal's dimension, not as a division between the front and rear.

5. Body Length

Length of body increases weight on the scales. Heavy and well-balanced cattle have extra length across all thirds. Nose to shoulder. Shoulder to hip. Hip to pin.

6. Tail Set

A neat tail set is not just an aesthetic preference. A correct tail set should finish off the spine smoothly with minimal deviation, up or down. Higher and more prominent tail sets often coincide with high pin bones, resulting in harder calving females.

7. Hip to Pin

Cattle that are longer and angled correctly from hip to pin have more reproductive area. An angle that is close to level from hip to pin is ideal. A sloping angle from hip to pin is preferred over an increasing angle. It's not easy for a cow to push a calf up hill.

8. Depth of Flank

The depth of an animal from the hip down to it's flank is a true indicator of it's fleshing ability, constitution and dimension. Animals that cut up high in the flank can be harder doing, leaner and not as maternal.

9. Stifle

Bulging of the stifle muscle is an indicator of how much true muscle is within an animal. Heavily muscled bulls when examined from behind exhibit their widest point at the stifle.

10. Rear Legs

Rear leg structure is one of the most critical aspects of working bulls and functional females. Post Legged/Straight Legged bulls have a far greater risk of stifle breakdown and arthritic side effects which often co-inside with steep pastern angle. The ideal skeletal angle from stifle-hock-pastern is around 140 degrees. As this angle becomes straighter with post legged animals, their freedom of movement, suspension in movement and length of stride are compromised.

11. Butt Shape

Roundness of butt is a good indicator of muscularity in bulls. Heavier muscled bulls have an even curve that starts at the pins and continues down deep into the thigh. Lighter muscled bulls will express a straighter curve that does not fill deep into the thigh, regardless of condition. From behind, heavier muscled bulls are widest at the stifle and full between the legs. Lighter muscled bulls are widest at the hips and become narrower down to the thigh.

12. Sheath

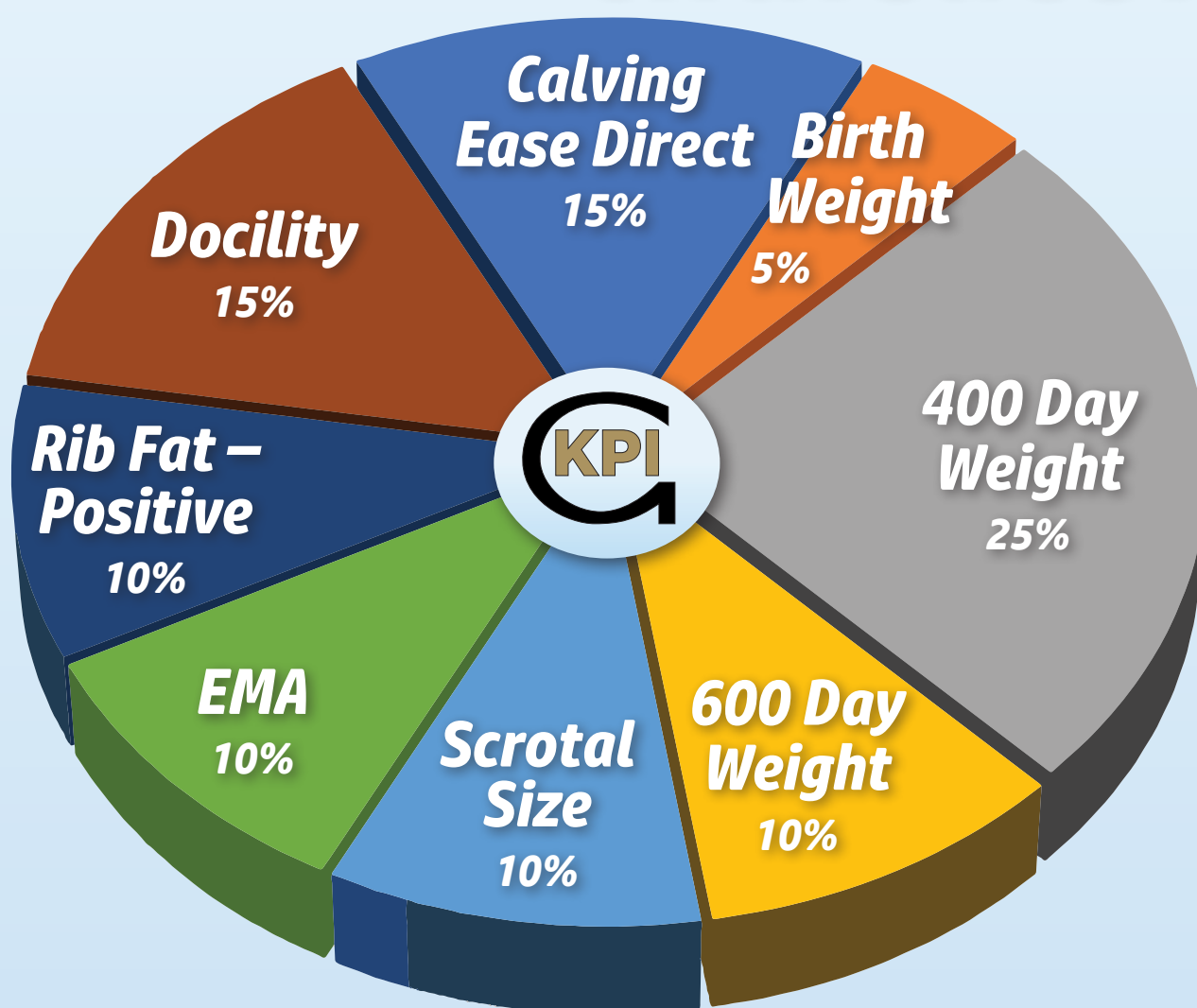
Broken penises are the most common breakdown in working bulls. Selecting bulls with tighter and less pendulous sheaths can provide some defense against this. Bulls with tighter and less pendulous sheaths generally have more control during service and are less prone to sheath damage and infections.

13. Hair Type

Slick, fine hair is more desirable than coarse and sometimes curly hair. Desirable hair type will often correlate to cattle that maintain good health and condition. Slick coated cattle will always present to their best at point of sale.

Glatz's

KPI Key Performance Indicators



Glatz's "KPI" is an innovative 'EBV Only' analysis. The KPI formula has been developed in house at Glatz Black Angus and describes the sale bulls purely from an EBV standpoint. The key individual traits are combined with each individual trait's level of influence therefore establishing a total KPI value.

The KPI rates all bulls based on the EBV traits of most economic influence to Glatz's southern Australian based clientele. Self-replacing weaner producers whose calves are finished on grass or short-term grain.

Glatz's KPI specifically targets the profitability traits of its commercial cattle clients.

Note – Specific EBV's need to be considered when selecting bulls for heifer joining. We recommend Calving Ease Direct (CED) as the number one EBV of importance with some support from Birth Weight (BW) and Gestation Length (GL).

Reference Sires



Ellingson Rangeland (USA)

- * Top 2% of the breed for Foot Angle
- * Top 3% of the breed for Retail Beef Yield
- * Proven Calving Ease



Rennylea Nationwide

- * Top 1-3% of the breed for 200 Growth, 400 Growth, 600 Growth and Carcase Weight
- * Top 10-19% of the breed for Calving Ease Daughters, Gestation Length and Feed Efficiency
- * Proven mature sire



Karoo Main Event (AUS)

- * Top 2% of the breed for Positive Fat
- * Top 2% of the breed for Claw Shape
- * Breed elite Foot Scores, Positive Fat and Calving Ease



Reference Sire ELLINGSON RANGELAND^{PV} Ident: USA19590500

Born: 24/02/2019 **Genetic Status:** AMF,CAF,DDF,NHF,DWF,MAF,MHF,OHF,OSF,RGF **Mating Type:** Natural **Registration Level:** HBR
BASIN RAINMAKER P175[#] CONNEALY THUNDER[#]
BASIN RAINMAKER 2704[#] CTS REMEDY 1T01[#]
BASIN ERICA 7520 BV[#] CTS 7V03 BELLEMER MAID 9T02[#]
SIRE: USA17913751 BASIN RAINMAKER 4404^{PV} **DAM: USA19588454 EA EMBLYNETTE 7009[#]**
BASIN PAYWEIGHT 107S[#] KOUPAL ADVANCE 28[#]
BASIN JOY 1036[#] EA EMBLYNETTE 5241[#]
BASIN JOY 566T[#] EA EMBLYNETTE 3249[#]

TACE	Mid December 2025 TransTasman Angus Cattle Evaluation																		
	CEDir	CEDtrs	GL	BW	200	400	600	MCW	MBC	MCH	Milk	SS	CWT	EMA	Rib	P8	RBY	IMF	DOC
EBV	+6.0	+6.0	-5.0	+4.2	+60	+101	+125	+107	+0.12	+4.6	+20	+1.8	+79	+8.3	-0.4	-3.8	+1.7	+0.2	+25
Acc	80%	62%	98%	97%	96%	96%	96%	92%	62%	73%	87%	94%	86%	86%	85%	83%	78%	86%	94%
Perc	21	22	41	56	15	29	41	42	89	96	28	63	22	29	58	94	3	93	33

Traits Observed: Genomics

Statistics: Number of Herds: 42, Prog Analysed: 519, Genomic Prog: 201

Ellingson's Angus is one of the highest credentialled Angus herds in the US. They are renowned for breeding structurally sound bulls ideal for self replacing cow herds. Ellingson Rangeland topped the sire averages at GBA sales in 2025.

Reference Sire RENNYLEA NATIONWIDE N432^{PV} Ident: NORN432

Born: 23/07/2017 **Genetic Status:** AMF,CAF,DDF,NHF,DWF,MAF,MHF,OSF,RGF **Mating Type:** ET **Registration Level:** HBR
G A R NEW DESIGN 5050[#] TE MANIA YORKSHIRE Y437^{PV}
G A R INGENUITY[#] TE MANIA BERKLEY B1^{PV}
G A R OBJECTIVE 1067[#] TE MANIA LOWAN Z53[#]
SIRE: USA17366506 H P C A INTENSITY[#] **DAM: NORH367 RENNYLEA H367^{SV}**
G A R PREDESTINED[#] TE MANIA INFINITY 04 379 AB[#]
G A R PREDESTINED 287L[#] RENNYLEA F228[#]
G A R OBJECTIVE 1885[#] RENNYLEA D6[#]

TACE	Mid December 2025 TransTasman Angus Cattle Evaluation																		
	CEDir	CEDtrs	GL	BW	200	400	600	MCW	MBC	MCH	Milk	SS	CWT	EMA	Rib	P8	RBY	IMF	DOC
EBV	+4.0	+7.5	-7.4	+4.9	+71	+124	+158	+163	+0.48	+8.3	+18	+0.5	+103	+4.8	-1.4	-3.2	+0.3	+1.8	+19
Acc	86%	75%	98%	98%	98%	98%	97%	93%	81%	87%	94%	97%	89%	88%	88%	88%	83%	87%	95%
Perc	39	10	12	71	2	2	3	2	8	47	44	94	1	70	79	90	53	64	55

Traits Observed: BWT,200WT,400WT,SC,Scan(EMA,Rib,Rump,IMF),DOC,Structure(Claw Set x 1, Foot Angle x 1),Genomics

Statistics: Number of Herds: 23, Prog Analysed: 900, Genomic Prog: 557

Rennylea Nationwide was selected for AI use at GBA as a proven 6yo sire. He ranks in the Top 1% of the Angus breed for Carcase Weight. Top 2% for 200 Growth and 400 Growth. Top 3% for 600 Growth. Top 10-12% for Calving Ease Daughters, Gestation Length and Feed Efficiency. Positive Calving Ease Direct.

Reference Sire KAROO MAIN EVENT M367^{SV} Ident: NENM367

Born: 20/09/2016 **Genetic Status:** AMF,CAF,DDF,NHF,RGF **Mating Type:** Natural **Registration Level:** HBR
SCHURRTOP REALITY X723[#] PAPA EQUATOR 2928[#]
MATAURI REALITY 839[#] ARDROSSAN EQUATOR A241^{PV}
MATAURI 06663[#] ARDROSSAN PRINCESS W38^{PV}
SIRE: NJWK12 MILWILLAH REALITY K12^{PV} **DAM: NENG34 KAROO DORIS G34[#]**
COONAMBLE ELEVATOR E11^{PV} THREE TREES ROCK ON 0059[#]
MILWILLAH BARUNAH H8^{SV} KAROO DORIS Y137^{SV}
MILWILLAH BARUNAH A44[#] KAROO FLATS DORIS V96[#]

TACE	Mid December 2025 TransTasman Angus Cattle Evaluation																		
	CEDir	CEDtrs	GL	BW	200	400	600	MCW	MBC	MCH	Milk	SS	CWT	EMA	Rib	P8	RBY	IMF	DOC
EBV	+3.2	+5.2	-6.3	+3.0	+45	+94	+123	+104	+0.37	+9.3	+18	+2.5	+59	+1.8	+2.4	+5.2	-0.9	+3.9	+24
Acc	83%	69%	97%	97%	96%	96%	96%	90%	69%	78%	92%	96%	87%	84%	84%	84%	79%	84%	94%
Perc	46	30	23	29	78	48	44	48	25	29	39	37	75	93	9	2	96	18	35

Traits Observed: CE,BWT,200WT,400WT,600WT,SC,Scan(EMA,Rib,Rump,IMF),Genomics

Statistics: Number of Herds: 4, Prog Analysed: 361, Genomic Prog: 170

Karoo Main Event is a proven sire who is breed elite for Foot Structure, Positive Fat and Calving Ease. He ranks in the Top 2% of the Angus breed for Rump Fat. Top 2% for Claw Shape. Top 9% for Rib Fat.



Reference Sires



"Rockstar"
Black Angus Beast Mode R70

- * Top 2% of the breed for Foot Angle
- * Top 5% of the breed for Docility
- * Elite Foot Structure, Superb Docility and Powerful Phenotype



Black Angus Dusty Martin
R608

- * Top 5% of the breed for Angus Breeding Index
- * Top 8-13% of the breed for Gestation Length, 200 Growth and EMA
- * High IMF and EMA



Black Angus Wattle Street
Q127

- * Top 1% of the breed for Docility
- * Top 2-3% of the breed for Foot Scores
- * Top 2-6% of the breed for 200 Growth, 400 Growth, 600 Growth and Carcase Weight

**Reference Sire BLACK ANGUS BEAST MODE R70^{SV}****Ident: SJQR70****Born:** 18/04/2020 **Genetic Status:** AMFU,CAFU,DDFU,NHFU**Mating Type:** AI **Registration Level:** HBRC R A BEXTOR 872 5205 608[#]VERMONT DRAMBUIE D057^{PV}G A R PROPHET^{SV}BLACK ANGUS BRAMBUIE F197^{SV}G A R OBJECTIVE 1885[#]VERMONT MARTINA D442[#]**SIRE: USA17960722 BALDRIDGE BEAST MODE B074^{PV}****DAM: SJQJ257 BLACK ANGUS EMPRESS J257[#]**STYLES UPGRADE J59[#]BLACK ANGUS NEWSLINE B37^{SV}BALDRIDGE ISABEL Y69[#]BLACK ANGUS EMPRESS F171[#]BALDRIDGE ISABEL T935[#]BLACK ANGUS EMPRESS C41[#]

TACE	Mid December 2025 TransTasman Angus Cattle Evaluation																		
	CEDir	CEDtrs	GL	BW	200	400	600	MCW	MBC	MCH	Milk	SS	CWT	EMA	Rib	P8	RBY	IMF	DOC
EBV	+1.2	-0.5	-2.0	+4.2	+61	+100	+121	+103	+0.25	+6.0	+11	+3.4	+66	+7.0	-1.6	-3.2	+1.0	+0.8	+38
Acc	75%	66%	83%	90%	89%	88%	88%	84%	72%	81%	78%	87%	79%	77%	77%	78%	71%	79%	85%
Perc	64	83	85	56	15	32	48	48	59	86	89	14	57	43	82	90	16	86	5

Traits Observed: GL,BWT,200WT,400WT,600WT,SC,Scan(EMA,Rib,Rump,IMF),DOC,Genomics

Statistics: Number of Herds: 1, Prog Analysed: 45, Genomic Prog: 6

Black Angus Beast Mode R70 "Rockstar" was retained for his Elite Foot Structure, Powerful Phenotype and Superb Docility. He ranks in the Top 2% of the Angus breed for Foot Angle. Top 5% for Docility. Top 6% for Feed Efficiency. Top 14% for Claw Shape.

Reference Sire BLACK ANGUS DUSTY MARTIN R608^{PV}**Ident: SJQR608****Born:** 18/08/2020 **Genetic Status:** AMF,CAF,DDF,NHF,DWF,MAF,MHF,OHF,OSF,RGF**Mating Type:** AI **Registration Level:** HBRC R A BEXTOR 872 5205 608[#]MCC DAYBREAK[#]G A R PROPHET^{SV}G A R ANTICIPATION[#]G A R OBJECTIVE 1885[#]G A R 5050 NEW DESIGN 0530[#]**SIRE: QMUM13 CLUNES CROSSING DUSTY M13^{PV}****DAM: YOAL81 YOOTHAMURRA L81^{SV}**TE MANIA BERKLEY B1^{PV}LAWSON'S DINKY-DI Z191^{SV}CLUNES CROSSING GLORIOUS G1^{SV}LAWSON'S DINKY DI E121^{SV}TE MANIA LOWAN A1[#]LAWSON'S SOLUTION C987[#]

TACE	Mid December 2025 TransTasman Angus Cattle Evaluation																		
	CEDir	CEDtrs	GL	BW	200	400	600	MCW	MBC	MCH	Milk	SS	CWT	EMA	Rib	P8	RBY	IMF	DOC
EBV	+1.8	+4.8	-8.1	+4.0	+63	+103	+117	+87	+0.17	+6.8	+7	+1.8	+60	+10.4	-2.3	-3.1	+0.6	+2.9	+11
Acc	70%	64%	91%	94%	91%	90%	91%	86%	76%	84%	79%	89%	81%	79%	79%	80%	73%	81%	86%
Perc	59	35	8	51	10	24	57	74	80	75	98	63	73	13	91	89	35	37	84

Traits Observed: GL,200WT,400WT,SC,Scan(EMA,Rib,Rump,IMF),DOC,Genomics

Statistics: Number of Herds: 3, Prog Analysed: 96, Genomic Prog: 8

Black Angus Dusty Martin R608 was retained for his physical type and structure. He is a High EMA and IMF proven sire. He has been used to join heifers and mature cows. He ranks in the Top 5% of the Angus breed for Angus Breeding Index. Top 8% for Gestation Length. Top 10% for 200 Growth. Top 13% for EMA.

Reference Sire BLACK ANGUS WATTLE STREET Q127^{SV}**Ident: SJQQ127****Born:** 15/05/2019 **Genetic Status:** AMF,CAF,DDF,NHF,DWF,MAF,MHF,OHF,OSF,RGF**Mating Type:** Natural **Registration Level:** HBRBASIN FRANCHISE P142[#]K C F BENNETT PERFORMER[#]EF COMPLEMENT 8088^{PV}WITHERSWOOD PERFORMER E49^{PV}EF EVERELDA ENTENSE 6117[#]WITHERSWOOD FLOWER C36^{SV}**SIRE: SJQL51 BLACK ANGUS COMPLEMENT L51^{SV}****DAM: SJQK53 BLACK ANGUS MST K53[#]**ARDROSSAN EQUATOR A241^{PV}ARDROSSAN ADMIRAL A2^{PV}BLACK ANGUS EXPO J119[#]BLACK ANGUS CLEOPATRA D25[#]BLACK ANGUS C804 EXPO A45[#]BLACK ANGUS CLEOPATRA A1[#]

TACE	Mid December 2025 TransTasman Angus Cattle Evaluation																		
	CEDir	CEDtrs	GL	BW	200	400	600	MCW	MBC	MCH	Milk	SS	CWT	EMA	Rib	P8	RBY	IMF	DOC
EBV	-17.0	-3.8	-0.4	+8.6	+67	+115	+156	+140	+0.24	+8.9	+15	+3.0	+101	+10.1	-1.0	-0.3	+1.0	-0.1	+48
Acc	76%	63%	94%	94%	93%	92%	93%	89%	77%	77%	84%	89%	81%	80%	81%	81%	74%	81%	91%
Perc	99	94	95	99	4	6	3	8	62	36	67	22	2	14	71	50	16	96	1

Traits Observed: BWT,200WT,400WT,DOC,Genomics

Statistics: Number of Herds: 6, Prog Analysed: 152, Genomic Prog: 47

Black Angus Wattle Street Q127 is a Proper Beef Bull. Super Sound, Super Docile, Super Thick and Heavy. His first progeny averaged \$24,250 in the 2023 GBA Sale. He sits at the Top 1% of the Angus breed for Docility. Top 2% for Claw Shape. Top 3% for Foot Angle. Top 3-6% for 200 Growth, 400 Growth and 600 Growth. Top 14% for EMA.

20%

50%

**Reference Sire GANDY ACCELERATE S28^{SV}****Ident: WKG21S28****Born:** 15/02/2021 **Genetic Status:** AMFU,CAFU,DDFU,NHFU**Mating Type:** AI **Registration Level:** HBRKOU PAL JUNE AU 797[#]CONNEALY IMPRESSION[#]KOU PAL ADVANCE 28[#]MAR INNOVATION 251^{PV}KOU PAL EBONETTE 734[#]MAR FINAL KAHUNA 856[#]**SIRE: USA18268046 ELLINGSON ACCELERATE 5264^{PV}****DAM: WKG34 DIAMOND ONE INNOVATION P34[#]**ELLINGSON PLATEAU 1155[#]V A R RESERVE 1111^{PV}EA EMBLYNETTE 3361[#]DIAMOND TREE RESERVE L147[#]EA EMBLYNETTE 0068[#]DIAMOND TREE CC & 7 H59[#]

TACE	Mid December 2025 TransTasman Angus Cattle Evaluation																		
	CEDir	CEDtrs	GL	BW	200	400	600	MCW	MBC	MCH	Milk	SS	CWT	EMA	Rib	P8	RBY	IMF	DOC
EBV	+6.4	+8.3	-6.7	+4.1	+58	+105	+138	+134	+0.10	+7.1	+19	+2.7	+81	+1.5	-0.9	-1.5	+0.6	+0.0	+22
Acc	69%	54%	84%	89%	87%	85%	86%	82%	61%	72%	74%	84%	75%	72%	72%	73%	64%	75%	80%
Perc	18	6	18	54	23	20	17	11	91	70	32	30	17	94	69	70	35	95	44

Traits Observed: GL,CE,BWT,200WT,400WT,600WT,Genomics

Statistics: Number of Herds: 1, Prog Analysed: 26, Genomic Prog: 2

Gandy Accelerate progeny stand out for their overall type and extra body length in addition to curve bending birth to growth. He ranks in the Top 6% of the Angus breed for Calving Ease Daughters. Top 6% for Foot Angle. Top 17-23% for 200 Growth, 400 Growth and 600 Growth. Calving Ease Direct @ Plus 6.4.

Reference Sire BLACK ANGUS TOM STEWART T407^{PV}**Ident: SJQ22T407****Born:** 11/06/2022 **Genetic Status:** AMF,CAF,DDF,NHF,DWF,MAF,MHF,OHF,OSF,RGF**Mating Type:** AI **Registration Level:** HBRA A R TEN X 7008 S A^{SV}MURDEDUKE KICKING K428^{PV}V A R DISCOVERY 2240^{PV}STONE POINT POWER P114^{SV}DEER VALLEY RITA 0308[#]STONE POINT DREAM M825^{SV}**SIRE: TFAN90 LANDFALL NEW GROUND N90^{PV}****DAM: SYAR546 STONEY POINT YANKEE QUEEN R546^{PV}**MATAURI REALITY 839[#]S A V RESOURCE 1441^{PV}LANDFALL ELSA L88^{PV}STONE POINT YANKEE QUEEN P263^{SV}LANDFALL ELSA J139[#]STONE POINT YANKEE QUEEN K129[#]

TACE	Mid December 2025 TransTasman Angus Cattle Evaluation																		
	CEDir	CEDtrs	GL	BW	200	400	600	MCW	MBC	MCH	Milk	SS	CWT	EMA	Rib	P8	RBY	IMF	DOC
EBV	-3.6	-1.6	-6.8	+5.3	+58	+104	+125	+99	+0.50	+8.3	+13	+2.7	+68	+15.9	-0.8	-1.4	+2.1	+0.1	+40
Acc	70%	64%	83%	90%	87%	86%	86%	83%	74%	82%	78%	82%	76%	73%	73%	74%	66%	76%	83%
Perc	89	88	17	78	24	21	40	55	6	48	77	30	52	1	67	69	1	94	4

Traits Observed: GL,BWT,200WT,400WT,SC,Scan(EMA,Rib,Rump,IMF),DOC,Genomics

Statistics: Number of Herds: 1, Prog Analysed: 43, Genomic Prog: 5

Black Angus Tom Stewart T407 progeny express tremendous muscle whilst being particularly sound and docile. T407 has been used to join heifers and mature cows. He ranks in the Top 1% of the Angus breed for EMA. Top 1% for Retail Beef Yield. Top 4% for Docility. Top 6% for Mature Body Condition.

Reference Sire KNOWLA MONTY M186^{PV}**Ident: BLAM186****Born:** 14/09/2016 **Genetic Status:** AMFU,CAFU,DDFU,NHFU**Mating Type:** AI **Registration Level:** HBRTE MANIA AMBASSADOR A134^{SV}SITZ NEW DESIGN 458N[#]TUWHARETOA REGENT D145^{PV}WATTLETOP SITZ 458N E111^{SV}LAWSON'S HENRY VIII Y5^{SV}WATTLETOP DANDLOO C36^{SV}**SIRE: BHRH744 DUNOON HIGHPOINT H744^{SV}****DAM: BLAH119 KNOWLA PANDA H119^{SV}**TE MANIA ADA A149^{PV}P A R B DESIGN PLUS 97[#]DUNOON ANGUISH D202[#]KNOWLA PANDA A49[#]DUNOON ANGUISH S067[#]KNOWLA PANDA R1+96[#]

TACE	Mid December 2025 TransTasman Angus Cattle Evaluation																		
	CEDir	CEDtrs	GL	BW	200	400	600	MCW	MBC	MCH	Milk	SS	CWT	EMA	Rib	P8	RBY	IMF	DOC
EBV	-6.4	+1.1	-3.0	+5.7	+62	+107	+148	+125	+0.27	+10.0	+22	+4.2	+95	+3.9	-2.0	-0.7	+0.4	+3.9	+24
Acc	70%	66%	97%	98%	96%	96%	96%	92%	79%	90%	92%	94%	87%	85%	86%	86%	80%	86%	93%
Perc	95	72	73	84	11	16	8	18	53	18	19	5	3	79	87	57	47	18	35

Traits Observed: GL,CE,BWT,200WT,400WT(x2),600WT,SC,Scan(EMA,Rib,Rump,IMF),DOC,Genomics

Statistics: Number of Herds: 29, Prog Analysed: 441, Genomic Prog: 257

Knowla Monty was introduced by AI to GBA for his Growth, Power, Sound Structure and Docility. He ranks in the Top 3% of the Angus breed for Carcase Weight. Top 5% for Scrotal Size. Top 6% for Feed Efficiency. Top 8-16% for 200 Growth, 400 Growth and 600 Growth.

20%

50%



Vic Cattleman's Bull Sale 2026

GLATZ BLACK ANGUS SALE BULLS

**3 Year
GUARANTEE**

Lot 1 BLACK ANGUS MAVERICK V386[#]

Ident: SJQ24V386

Born: 20/05/2024 Genetic Status: AMFU,CAFU,DDFU,NHFU
BOOROOMOOKA UNDERTAKEN Y145^{PV}
RENNYLEA EDMUND E11^{PV}
LAWSON'S HENRY VIII Y5^{SV}

Mating Type: Natural Registration Level: HBR
MUSGRAVE BIG SKY^{PV}
CLUDEN NEWRY BIG SKY M59^{SV}
CLUDEN NEWRY CLYPTA E68[#]

SIRE: SYAM07 STONEY POINT MOMENTUM M07^{PV}

DAM: THCP263 CLUDEN NEWRY P263^{PV}

WMR TIMELESS 458[#]
STONEY POINT YANKEE QUEEN K32^{PV}
STONEY POINT YANKEE QUEEN F153^{PV}

CARABAR DOCKLANDS D62^{PV}
CLUDEN NEWRY LASSIE K131^{SV}
CLUDEN NEWRY LASSIE C141[#]

<div>TACE</div> <div>Trans Tasman Angus Cattle Evaluation</div>	Mid December 2025 TransTasman Angus Cattle Evaluation																		
	CEDir	CEDtrs	GL	BW	200	400	600	MCW	MBC	MCH	Milk	SS	CWT	EMA	Rib	P8	RBY	IMF	DOC
EBV	+1.4	+0.0	-4.8	+5.4	+58	+98	+133	+101	+0.37	+8.0	+22	+2.9	+87	+9.2	+0.3	-0.1	+1.1	+0.8	+19
Acc	62%	55%	73%	75%	75%	72%	75%	72%	51%	56%	67%	75%	65%	64%	65%	65%	58%	68%	69%
Perc	62	80	44	80	24	36	24	52	25	53	17	24	9	21	41	47	13	86	57

Traits Observed: BWT,200WT,600WT(x2),SC,Scan(EMA,Rib,Rump,IMF),DOC

Maverick V386 pays tribute to his great sire. Stoney Point Momentum M07 was recruited to GBA as a mature 7yo sire for his proven record of producing Positive Fat progeny in a medium mature size with very good feet. V386 ranks in the Top 9% of the Angus breed for Carcase Weight. Top 13% for Retail Beef Yield. Overall, he ranks inside the Top 50% of the Angus breed for 16 individual traits. Positive Fat.

DOCILITY ST★R RATING



Scrotal Circumference: 40.5cm

KPI
174

Age: 21 months

Purchaser..... \$.....

Lot 2 BLACK ANGUS NATIONWIDE V325[#]

Ident: SJQ24V325

Born: 20/04/2024 Genetic Status: AMFU,CAFU,DDFU,NHFU
G A R INGENUITY[#]
H P C A INTENSITY[#]
G A R PREDESTINED 287L[#]


Mating Type: AI Registration Level: APR
BANGADANG WESTERN EXPRESS E10^{SV}
TEXAS HOLD 'EM H126^{PV}
TEXAS UNDINE Z183^{PV}

SIRE: NORN432 RENNYLEA NATIONWIDE N432^{PV}

DAM: SJQM89 BLACK ANGUS ENTERPRISE M89[#]

TE MANIA BERKLEY B1^{PV}
RENNYLEA H367^{SV}
RENNYLEA F228[#]

BLACK ANGUS NEWSLINE B37^{SV}
BLACK ANGUS ENTERPRISE E139[#]
FUTURE ANGUS ENTERPRISE Z12[#]

TACE 	Mid December 2025 TransTasman Angus Cattle Evaluation																		
	CEDir	CEDtrs	GL	BW	200	400	600	MCW	MBC	MCH	Milk	SS	CWT	EMA	Rib	P8	RBY	IMF	DOC
EBV	+2.6	+1.9	-5.4	+6.0	+65	+115	+155	+156	+0.41	+8.3	+15	+2.1	+90	+9.7	-2.0	-3.0	+1.5	-0.1	+19
Acc	59%	52%	83%	75%	71%	70%	75%	68%	45%	47%	65%	74%	62%	61%	62%	62%	57%	63%	64%
Perc	52	65	35	88	7	6	4	3	17	48	66	51	6	17	87	88	5	96	56

Traits Observed: GL,BWT,200WT,600WT(x2),SC,Scan(Rib,Rump,IMF),DOC

Nationwide V325 is from a long line of Enterprise females whose progeny head up GBA Bull Sales year in year out. V325's dam is due on her 8th natural calf in 2026. His dam, grand dam and great grand dam have produced 28 natural calves to date. He ranks in the Top 4-7% of the Angus breed for 200 Growth, 400 Growth, 600 Growth, Carcase Weight and Retail Beef Yield. Positive Calving Ease Direct at plus 2.6

DOCILITY ST★R RATING



Scrotal Circumference: 42cm

KPI
186

Age: 22 months

Purchaser..... \$.....

20% 50%



Lot 3 BLACK ANGUS BLOCKBUSTER V305[#]

Ident: SJQ24V305

Born: 16/04/2024

Genetic Status: AMFU,CAFU,DDFU,NHFU

Mating Type: AI

Registration Level: APR

MATAURI REALITY 839[#]

ARDROSSAN EQUATOR A241^{PV}

MILWILLAH REALITY K12^{PV}

BLACK ANGUS EQUATOR A241 H11^{SV}

MILWILLAH BARUNAH H8^{SV}

BLACK ANGUS X56 WILCOOLA D101^{SV}

SIRE: NENM367 KAROO MAIN EVENT M367^{SV}

DAM: SJQN43 BLACK ANGUS MIEGUNYAH N43[#]

ARDROSSAN EQUATOR A241^{PV}

VERMONT NEUTRON X306^{PV}

KAROO DORIS G34[#]

BLACK ANGUS MIEGUNYAH G9[#]

KAROO DORIS Y137^{SV}

MIEGUNYAH S050[#]

TACE	Mid December 2025 TransTasman Angus Cattle Evaluation																		
	CEDir	CEDtrs	GL	BW	200	400	600	MCW	MBC	MCH	Milk	SS	CWT	EMA	Rib	P8	RBY	IMF	DOC
EBV	+0.5	+2.2	-5.8	+5.0	+53	+101	+136	+126	+0.33	+9.4	+16	+2.9	+77	+2.0	-0.9	+0.7	+0.1	+1.6	+24
Acc	58%	49%	83%	75%	72%	71%	75%	69%	41%	44%	65%	75%	63%	60%	62%	62%	56%	63%	65%
Perc	69	62	29	73	44	28	20	17	35	27	62	24	27	92	69	33	65	69	36

Traits Observed: GL,BWT,200WT,600WT(x2),SC,Scan(EMA,Rib,Rump,IMF),DOC

Blockbuster V305 is endorsed by a super lineage of outstanding cows and cow-maker sires. Legendary sires in Reality and A241 blended with outstanding females such as S50 and G9. V305 ranks in the Top 21-28% of the Angus breed for 400 Growth, 600 Growth, Scrotal Size and Carcase Weight. Positive Fat. 43cm Scrotal.

DOCILITY ST★R RATING



Scrotal Circumference: 43cm

KPI
159

Age: 22 months

Purchaser..... \$.....

Lot 4 BLACK ANGUS WATTLE STREET V295^{SV}

Ident: SJQ24V295

Born: 13/04/2024

Genetic Status: AMFU,CAFU,DDFU,NHFU

Mating Type: AI

Registration Level: HBR

EF COMPLEMENT 8088^{PV}

RENNYLEA EDMUND E11^{PV}

BLACK ANGUS COMPLEMENT L51^{SV}

WILLOW FIELDS HANS H37^{PV}

BLACK ANGUS EXPO J119[#]

WILLOW FIELDS BARA F13^{PV}

SIRE: SJQQ127 BLACK ANGUS WATTLE STREET Q127^{SV}

DAM: SJQP123 BLACK ANGUS ROSEBUD P123[#]

WITHERSWOOD PERFORMER E49^{PV}

COONAMBLE ELEVATOR E11^{PV}

BLACK ANGUS MST K53[#]

BLACK ANGUS ROSEBUD M75[#]

BLACK ANGUS CLEOPATRA D25[#]

BLACK ANGUS ROSEBUD G19[#]

TACE	Mid December 2025 TransTasman Angus Cattle Evaluation																		
	CEDir	CEDtrs	GL	BW	200	400	600	MCW	MBC	MCH	Milk	SS	CWT	EMA	Rib	P8	RBY	IMF	DOC
EBV	-8.5	-7.3	-1.6	+7.3	+53	+92	+119	+112	+0.25	+7.6	+12	+2.3	+74	+6.5	-1.0	+0.0	+1.6	-0.4	+32
Acc	65%	55%	83%	81%	83%	81%	81%	78%	68%	76%	74%	79%	70%	70%	69%	70%	61%	74%	76%
Perc	98	99	88	97	46	56	52	35	59	60	86	44	34	49	71	45	4	98	13

Traits Observed: GL,BWT,200WT,600WT(x2),SC,Scan(EMA,Rib,Rump,IMF),DOC,Genomics

Welcome back in 2026 - sons of the great Black Angus Wattle Street Q127. His entire drop of sons averaged \$24,250 in the 2023 GBA February sale. Wattle Street sons have also topped stud sales and sire group averages in NSW and WA. Wattle Street produces progeny that are Super Sound, Super Docile, Super Thick and Heavy. This fellow, Wattle Street V295 ranks in the top 4% of the Angus breed for Retail Beef Yield. Top 13% for Docility. 4.5 Star Docility Rating.

DOCILITY ST★R RATING



Scrotal Circumference: 42.5cm

KPI
129

Age: 22 months

Purchaser..... \$.....

Lot 5 BLACK ANGUS ROCKSTAR V70[#]

Ident: SJQ24V70

Born: 23/05/2024

Genetic Status: AMFU,CAFU,DDFU,NHFU

Mating Type: Natural

Registration Level: APR

G A R PROPHET^{SV}

STORTH OAKS JACK J7^{SV}

BALDRIDGE BEAST MODE B074^{PV}

BLACK ANGUS JONAH LOMU P229^{SV}

BALDRIDGE ISABEL Y69[#]

BLACK ANGUS DREAM L47[#]

SIRE: SJQR70 BLACK ANGUS BEAST MODE R70^{SV}

DAM: SJQ21S111 BLACK ANGUS WILCOOLA S111[#]

BLACK ANGUS BRAMBUIE F197^{SV}

VISION UNANIMOUS 1418^{PV}

BLACK ANGUS EMPRESS J257[#]

BLACK ANGUS WILCOOLA Q25[#]

BLACK ANGUS EMPRESS F171[#]

BLACK ANGUS WILCOOLA K229[#]

TACE	Mid December 2025 TransTasman Angus Cattle Evaluation																		
	CEDir	CEDtrs	GL	BW	200	400	600	MCW	MBC	MCH	Milk	SS	CWT	EMA	Rib	P8	RBY	IMF	DOC
EBV	+2.8	+1.7	-3.8	+4.6	+59	+105	+130	+101	+0.24	+7.4	+14	+3.1	+76	+5.8	-1.5	-2.8	+0.6	+1.5	+38
Acc	55%	47%	64%	72%	68%	69%	72%	66%	46%	45%	58%	72%	59%	57%	59%	59%	52%	61%	60%
Perc	50	67	61	65	19	19	31	52	62	64	71	20	30	58	80	87	35	71	5

Traits Observed: BWT,200WT,400WT,600WT,SC,Scan(EMA,Rib,Rump,IMF),DOC

#5 ranked KPI bull in the sale. Rockstar V70 is a late May drop heifer joining option from a 2nd calving Jonah Lomu daughter. Jonah Lomu P229 is 8yo and still joining stud cows in the Coonawarra Wine Region. Rockstar V70 ranks in the Top 5% of the Angus breed for Docility. Top 19-35% for 200 Growth, 400 Growth, 600 Growth, Scrotal and Carcase Weight. 5 Star Docility Rating.

DOCILITY ST★R RATING



Scrotal Circumference: 40.5cm

KPI
195

Age: 21 months

Purchaser..... \$.....

20% 50%



Lot 6 BLACK ANGUS RANGELAND V28^{SV} Ident: SJQ24V28

Born: 15/04/2024 **Genetic Status:** AMFU,CAFU,DDFU,NHFU **Mating Type:** AI **Registration Level:** HBR
BASIN RAINMAKER 2704[#] TE MANIA EMPEROR E343^{PV}
BASIN RAINMAKER 4404^{PV} STORTH OAKS JACK J7^{SV}
BASIN JOY 1036[#] STORTH OAKS G183[#]
SIRE: USA19590500 ELLINGSON RANGELAND^{PV} **DAM: SJQQ66 BLACK ANGUS EMPRESS Q66[#]**
CTS REMEDY 1T01[#] WILLOW FIELDS HANS H37^{PV}
EA EMBLYNETTE 7009[#] BLACK ANGUS EMPRESS L127[#]
EA EMBLYNETTE 5241[#] BLACK ANGUS W71 EMPRESS F193[#]

TACE	Mid December 2025 TransTasman Angus Cattle Evaluation																		
	CEDir	CEDtrs	GL	BW	200	400	600	MCW	MBC	MCH	Milk	SS	CWT	EMA	Rib	P8	RBY	IMF	DOC
EBV	+4.3	+0.2	-5.1	+5.6	+51	+89	+115	+113	+0.33	+6.4	+18	+1.0	+63	+6.7	-1.4	-4.5	+1.9	-1.5	+9
Acc	66%	54%	83%	82%	83%	81%	82%	79%	65%	74%	74%	79%	70%	70%	70%	70%	62%	74%	77%
Perc	36	79	40	83	53	62	63	33	35	81	40	86	65	46	79	96	2	99	88

Traits Observed: GL,BWT,200WT,400WT,600WT,SC,Scan(EMA,Rib,Rump,IMF),DOC,Genomics

An elite Rangeland son suitable for heifer joining. His full brother sold to a repeat NSW client for \$11,000 in our Spring 2024 Yearling Sale. Rangeland V28 ranks in the Top 2-4% of the Angus breed for Retail Beef Yield, Feed Efficiency and Foot Scores.

DOCILITY ST★R RATING



Scrotal Circumference: 40cm

KPI
103

Age: 22 months

Purchaser..... \$.....

Lot 7 BLACK ANGUS RANGELAND V23[#] Ident: SJQ24V23

Born: 12/04/2024 **Genetic Status:** AMFU,CAFU,DDFU,NHFU **Mating Type:** AI **Registration Level:** APR
BASIN RAINMAKER 2704[#] MATAURI REALITY 839[#]
BASIN RAINMAKER 4404^{PV} KAROO KNOCKOUT K176^{SV}
BASIN JOY 1036[#] KAROO JEDDA H213[#]
SIRE: USA19590500 ELLINGSON RANGELAND^{PV} **DAM: SJQQ80 BLACK ANGUS SCOTCH Q80[#]**
CTS REMEDY 1T01[#] GALWAY EQUATION E16^{SV}
EA EMBLYNETTE 7009[#] BLACK ANGUS SCOTCH J271[#]
EA EMBLYNETTE 5241[#] BLACK ANGUS SCOTCH F145[#]

TACE	Mid December 2025 TransTasman Angus Cattle Evaluation																		
	CEDir	CEDtrs	GL	BW	200	400	600	MCW	MBC	MCH	Milk	SS	CWT	EMA	Rib	P8	RBY	IMF	DOC
EBV	+3.5	+5.5	-4.8	+4.4	+53	+93	+120	+117	+0.33	+7.2	+16	+3.2	+65	+4.7	+0.4	-0.7	+0.9	+0.9	+22
Acc	59%	48%	83%	75%	71%	72%	75%	69%	44%	45%	63%	74%	62%	61%	62%	61%	56%	63%	65%
Perc	43	27	44	61	42	50	52	28	35	68	61	17	60	71	39	57	20	84	45

Traits Observed: GL,BWT,200WT,400WT,600WT,SC,Scan(EMA,Rib,Rump,IMF),DOC

Rangeland progeny topped the sire average and highest price in our Feb 2025 sale. Rangeland V23 is an elite heifer joining option that will impress for overall type, structure and performance. 43cm Scrotal. 4.5 Star Docility Rating. His dam and grand dam have recorded 20 x natural calves to date.

DOCILITY ST★R RATING



Scrotal Circumference: 43cm

KPI
160

Age: 22 months

Purchaser..... \$.....

Lot 8 BLACK ANGUS ROCKSTAR V38[#] Ident: SJQ24V38

Born: 29/04/2024 **Genetic Status:** AMFU,CAFU,DDFU,NHFU **Mating Type:** Natural **Registration Level:** HBR
G A R PROPHET^{SV} TE MANIA EMPEROR E343^{PV}
BALDRIDGE BEAST MODE B074^{PV} STORTH OAKS JACK J7^{SV}
BALDRIDGE ISABEL Y69[#] STORTH OAKS G183[#]
SIRE: SJQR70 BLACK ANGUS BEAST MODE R70^{SV} **DAM: SJQQ17 BLACK ANGUS EXPO Q17[#]**
BLACK ANGUS BRAMBUIE F197^{SV} BOORAGUL WT458N K11^{SV}
BLACK ANGUS EMPRESS J257[#] BLACK ANGUS EXPO N279[#]
BLACK ANGUS EMPRESS F171[#] BLACK ANGUS EXPO J119[#]

TACE	Mid December 2025 TransTasman Angus Cattle Evaluation																		
	CEDir	CEDtrs	GL	BW	200	400	600	MCW	MBC	MCH	Milk	SS	CWT	EMA	Rib	P8	RBY	IMF	DOC
EBV	+3.3	+1.6	-3.9	+4.2	+62	+106	+138	+118	+0.29	+8.9	+16	+3.9	+79	+5.6	-1.3	-2.4	+0.6	+0.4	+39
Acc	57%	49%	66%	73%	70%	70%	73%	67%	49%	51%	60%	73%	60%	59%	61%	61%	54%	63%	62%
Perc	45	68	59	56	12	17	17	26	47	36	60	7	22	60	77	82	35	91	4

Traits Observed: BWT,200WT,400WT,600WT,SC,Scan(EMA,Rib,Rump,IMF),DOC

#1 ranked KPI bull in the sale. If Rockstar V38 was a Thoroughbred his pedigree would be full of Black Type! His dam's first son sold for \$24,000 in 2023. Her second son sold for \$17,000 in 2024. Her third son has been retained at GBA. This fellow, Rockstar V38 is her fourth son. His sire Beast Mode R70 is breed elite for Foot Scores and Docility. V38 ranks in the Top 4% for Docility. Top 7% for Scrotal. Top 12-18% for 200 Growth, 400 Growth, 600 Growth and Feed Efficiency. 5 Star Docility Rating. Semen marketing rights retained.

DOCILITY ST★R RATING



Scrotal Circumference: 43cm

KPI
209

Age: 21.5 months

Purchaser..... \$.....

20% 50%



Lot 9**BLACK ANGUS NATIONWIDE V263[#]****Ident: SJQ24V263**

Born: 07/04/2024**Genetic Status:** AMFU,CAFU,DD50%,NHFU**Mating Type:** AI**Registration Level:** HBR

G A R INGENUITY[#]**BON VIEW NEW DESIGN 1407^{SV}**

H P C A INTENSITY[#]**LCC NEW STANDARD^{SV}**


G A R PREDESTINED 287L[#]**LCC SUNSET K3118[#]**

SIRE: NORN432 RENNYLEA NATIONWIDE N432^{PV}**DAM: SJQK57 BLACK ANGUS NS IRIS K57[#]**

TE MANIA BERKLEY B1^{PV}**BLACK ANGUS BODYBUILDER E45^{SV}**

RENNYLEA H367^{SV}**BLACK ANGUS IRIS H159[#]**

RENNYLEA F228[#]**ST PAULS IRIS B108[#]**

 TACE TransTasman Angus Cattle Evaluation	Mid December 2025 TransTasman Angus Cattle Evaluation																		
	CEDir	CEDtrs	GL	BW	200	400	600	MCW	MBC	MCH	Milk	SS	CWT	EMA	Rib	P8	RBY	IMF	DOC
EBV	+1.6	+4.2	-5.2	+4.5	+63	+111	+139	+118	+0.34	+8.3	+19	+1.0	+86	+9.1	+0.4	+0.3	+0.4	+1.9	+10
Acc	59%	51%	83%	75%	72%	70%	75%	68%	45%	47%	66%	74%	62%	61%	63%	63%	57%	64%	64%
Perc	61	41	38	63	9	10	16	27	33	48	34	86	10	21	39	40	47	61	88

Traits Observed: GL,BWT,200WT,600WT(x2),SC,Scan(EMA,Rib,Rump,IMF),DOC

Nationwide V263 ticks the boxes over a long list of performance indicators. His LCC New Standard sired dam has been a ripper. She is due on her 10th natural calf in 2026. V263 ranks in the Top 9-21% of the Angus breed for 200 Growth, 400 Growth, 600 Growth, Carcase Weight, EMA and Angus Breeding Index.

DOCILITY ST★R RATING



Scrotal Circumference: 39.5cm



Age: 22.5 months

Purchaser..... \$.....

Lot 10**BLACK ANGUS RANGELAND V284^{PV}****Ident: SJQ24V284**

Born: 10/04/2024**Genetic Status:** AMFU,CAFU,DDFU,NHFU**Mating Type:** AI**Registration Level:** HBR

BASIN RAINMAKER 2704[#]**SITZ UPWARD 307R^{SV}**

BASIN RAINMAKER 4404^{PV}**KOUPALS B&B IDENTITY^{SV}**


BASIN JOY 1036[#]**B&B ERICA 605[#]**

SIRE: USA19590500 ELLINGSON RANGELAND^{PV}**DAM: SYAP213 STONEY POINT LANA P213^{SV}**

CTS REMEDY 1T01[#]**TUWHARETOA REGENT D145^{PV}**

EA EMBLYNETTE 7009[#]**STONEY POINT LANA K486^{SV}**

EA EMBLYNETTE 5241[#]**COORONG F33[#]**

 TACE TransTasman Angus Cattle Evaluation	Mid December 2025 TransTasman Angus Cattle Evaluation																		
	CEDir	CEDtrs	GL	BW	200	400	600	MCW	MBC	MCH	Milk	SS	CWT	EMA	Rib	P8	RBY	IMF	DOC
EBV	-2.6	+6.1	-4.4	+8.3	+67	+112	+145	+117	+0.08	+7.2	+22	+1.7	+90	+10.6	-1.8	-3.6	+1.6	-0.3	+7
Acc	68%	57%	84%	83%	84%	82%	82%	80%	65%	76%	76%	80%	72%	71%	71%	72%	62%	75%	78%
Perc	86	22	51	99	5	8	10	28	93	68	18	66	7	12	85	93	4	97	93

Traits Observed: GL,BWT,200WT,600WT,SC,Scan(EMA,Rib,Rump,IMF),DOC,Genomics

Rangeland V284 could be the highest performance sire in this sale - Top 1-22% of the entire Angus breed for Calving Ease Daughters, 200 Growth, 400 Growth, 600 Growth, Milk, Carcase Weight, EMA, Retail Beef Yield, Feed Efficiency, Foot Scores and Angus Breeding Index! His actual birth weight was 41.5kg, being slightly above the average for his contemporary group. 4.5 Star Docility Rating.

DOCILITY ST★R RATING



Scrotal Circumference: 40cm



Age: 22.5 months

Purchaser..... \$.....

Lot 11**BLACK ANGUS WATTLE STREET V278[#]****Ident: SJQ24V278**

Born: 10/04/2024**Genetic Status:** AMFU,CAFU,DDFU,NHFU**Mating Type:** AI**Registration Level:** APR

EF COMPLEMENT 8088^{PV}**EF COMPLEMENT 8088^{PV}**

BLACK ANGUS COMPLEMENT L51^{SV}**BLACK ANGUS COMPLEMENT L51^{SV}**

BLACK ANGUS EXPO J119[#]**BLACK ANGUS EXPO J119[#]**

SIRE: SJQQ127 BLACK ANGUS WATTLE STREET Q127^{SV}**DAM: SJQP301 BLACK ANGUS CHAMPAGNE P301[#]**

WITHERSWOOD PERFORMER E49^{PV}**BLACK ANGUS EQUATOR A241 H11^{SV}**

BLACK ANGUS MST K53[#]**BLACK ANGUS CHAMPAGNE L27[#]**

BLACK ANGUS CLEOPATRA D25[#]**BLACK ANGUS CHAMPAGNE J247^{SV}**

<div><div>TACE</div><div>Trans Tasman Angus Cattle Evaluation</div></div>	Mid December 2025 TransTasman Angus Cattle Evaluation																		
	CEDir	CEDtrs	GL	BW	200	400	600	MCW	MBC	MCH	Milk	SS	CWT	EMA	Rib	P8	RBY	IMF	DOC
EBV	-5.1	-0.1	-2.7	+5.3	+61	+104	+137	+119	+0.31	+9.1	+18	+3.7	+88	+5.9	+0.6	+1.7	+0.1	+1.0	+37
Acc	58%	49%	84%	75%	71%	69%	71%	68%	47%	44%	63%	72%	61%	61%	63%	63%	56%	65%	65%
Perc	93	80	77	78	15	22	18	25	41	33	44	9	8	56	35	19	65	82	6

Traits Observed: GL,BWT,200WT,SC,Scan(EMA,Rib,IMF),DOC

Wattle Street V278 is double bred to the great Black Angus Complement L51 "Selwood". His dam produced an \$11,000 son selling to Mt Beevor in 2025. V278 ranks in the Top 6-9% of the Angus breed for the essential traits of Docility, Scrotal Size and Carcase Weight. Top 15-22% for 200 Growth, 400 Growth, 600 Growth, Days to Calving and Positive Fat. 44.5cm Scrotal. 4.5 Star Docility Rating.

DOCILITY ST★R RATING



Scrotal Circumference: 44.5cm



Age: 22.5 months

Purchaser..... \$.....

20% 50%

**Lot 12 BLACK ANGUS WATTLE STREET V300^{PV}****Ident: SJQ24V300****Born:** 14/04/2024**Genetic Status:** AMFU,CAFU,DDFU,NHFU**Mating Type:** AI**Registration Level:** HBREF COMPLEMENT 8088^{PV}BLACK ANGUS COMPLEMENT L51^{SV}BLACK ANGUS EXPO J119[#]TUWHARETOA REGENT D145^{PV}PRIME JUGGERNAUT J15^{SV}PRIME LOWAN F20^{SV}**SIRE: SJQQ127 BLACK ANGUS WATTLE STREET Q127^{SV}****DAM: SYAN52 STONEY POINT PRIMROSE N52^{SV}**WITHERSWOOD PERFORMER E49^{PV}BLACK ANGUS MST K53[#]BLACK ANGUS CLEOPATRA D25[#]SITZ WISDOM 481T[#]STONEY POINT PRIMROSE K253^{SV}STONEY POINT PRIMROSE H182[#]

TACE	Mid December 2025 TransTasman Angus Cattle Evaluation																		
	CEDir	CEDtrs	GL	BW	200	400	600	MCW	MBC	MCH	Milk	SS	CWT	EMA	Rib	P8	RBY	IMF	DOC
EBV	-9.9	+3.5	-1.3	+6.9	+64	+109	+146	+109	+0.29	+8.3	+21	+1.8	+104	+6.8	+1.8	+3.3	-0.2	+1.4	+33
Acc	65%	56%	83%	82%	83%	81%	82%	79%	68%	78%	75%	79%	71%	70%	70%	71%	61%	74%	77%
Perc	99	49	91	95	7	12	9	39	47	47	20	63	1	45	15	7	79	73	11

Traits Observed: GL,BWT,200WT,600WT(x2),SC,Scan(EMA,Rib,Rump,IMF),DOC,Genomics

Wattle Street V300 will catch your eye. A magnificent type backed by a great suite of data. Top 1% of the Angus breed for Foot Scores. Top 1% for Carcase Weight. Top 7-15% for 200 Growth, 400 Growth, 600 Growth, Days to Calving, Docility, Positive Rib Fat, Positive Rump Fat and Angus Breeding Index. Actual Birth Weight - 40kg.

DOCILITY ST★R RATING**Scrotal Circumference:** 38.5cm**KPI**
188**Age:** 22 months**Purchaser:** \$.....**Lot 13 BLACK ANGUS MONTY V277[#]****Ident: SJQ24V277****Born:** 10/04/2024**Genetic Status:** AMFU,CAFU,DDFU,NHFU**Mating Type:** AI**Registration Level:** HBRTUWHARETOA REGENT D145^{PV}DUNOON HIGHPOINT H744^{SV}DUNOON ANGUISH D202[#]PATHFINDER GENESIS G357^{PV}PATHFINDER COMPLETE K22^{SV}PATHFINDER EQUATOR H756[#]**SIRE: BLAM186 KNOWLA MONTY M186^{PV}****DAM: THCP124 CLUDEN NEWRY P124[#]**WATTLETOP SITZ 458N E111^{SV}KNOWLA PANDA H119^{SV}KNOWLA PANDA A49[#]SYDGEN BLACK PEARL 2006^{PV}CLUDEN NEWRY ALISON L147[#]CLUDEN NEWRY ALISON H117[#]

TACE	Mid December 2025 TransTasman Angus Cattle Evaluation																		
	CEDir	CEDtrs	GL	BW	200	400	600	MCW	MBC	MCH	Milk	SS	CWT	EMA	Rib	P8	RBY	IMF	DOC
EBV	+3.1	+4.2	-4.6	+3.2	+46	+83	+110	+83	+0.22	+9.0	+22	+2.7	+67	+4.9	+0.0	+1.3	+0.2	+3.4	+20
Acc	55%	49%	83%	74%	70%	69%	74%	69%	51%	58%	63%	73%	62%	61%	63%	63%	57%	64%	64%
Perc	47	41	48	33	75	78	73	78	68	34	18	30	55	68	49	24	59	27	51

Traits Observed: GL,BWT,200WT,600WT(x2),SC,Scan(EMA,Rib,Rump,IMF),DOC

Monty V277 is an elite heifer joining option. His sire, Knowla Monty was introduced by AI to GBA for his Growth, Power, Sound Structure and Docility. Monty V277 is a Positive Fat sire with IMF @ Plus 3.4 Docility Star Rating at 4.5

DOCILITY ST★R RATING**Scrotal Circumference:** 40.5cm**KPI**
126**Age:** 22.5 months**Purchaser:** \$.....**Lot 14 BLACK ANGUS RANGELAND V344[#]****Ident: SJQ24V344****Born:** 24/04/2024**Genetic Status:** AMFU,CAFU,DDFU,NHFU**Mating Type:** AI**Registration Level:** HBRBASIN RAINMAKER 2704[#]BASIN RAINMAKER 4404^{PV}BASIN JOY 1036[#]MILWILLAH ELEVATOR H76^{PV}PINORA LEVI L73[#]PINORA LILA G68[#]**SIRE: USA19590500 ELLINGSON RANGELAND^{PV}****DAM: SJQP315 BLACK ANGUS ENTERPRISE P315[#]**CTS REMEDY 1T01[#]EA EMBLYNETTE 7009[#]EA EMBLYNETTE 5241[#]BLACK ANGUS BRAMBUIE F197^{SV}BLACK ANGUS ENTERPRISE J279[#]BLACK ANGUS U21 ENTERPRISE F17[#]

TACE	Mid December 2025 TransTasman Angus Cattle Evaluation																		
	CEDir	CEDtrs	GL	BW	200	400	600	MCW	MBC	MCH	Milk	SS	CWT	EMA	Rib	P8	RBY	IMF	DOC
EBV	-3.2	+0.9	-2.3	+7.5	+64	+107	+143	+139	+0.25	+7.9	+14	+2.2	+83	+7.4	-1.5	-3.1	+1.6	-0.1	+22
Acc	56%	44%	83%	75%	71%	70%	75%	68%	38%	41%	60%	74%	62%	58%	60%	59%	55%	60%	64%
Perc	88	74	82	98	8	15	12	8	59	54	70	48	14	38	80	89	4	96	42

Traits Observed: GL,BWT,200WT,600WT(x2),SC,Scan(EMA,Rib,Rump,IMF),DOC

*****5 Star Docility. Another powerful son of Ellingson Rangeland (USA). Rangeland V344's dam is due on her 8th natural calf and produced an \$11,000 son selling to Hamish and Lachie Robertson in 2025. Rangeland V344 ranks in the Top 4% of the Angus breed for Retail Beef Yield. Top 8-15% for 200 Growth, 400 Growth, 600 Growth and Carcase Weight. Actual Birth Weight - 41.5kg

DOCILITY ST★R RATING**Scrotal Circumference:** 40.5cm**KPI**
162**Age:** 22 months**Purchaser:** \$.....

20% 50%

**Lot 15 BLACK ANGUS RANGELAND V273^{SV} Ident: SJQ24V273**

Born: 09/04/2024 **Genetic Status:** AMFU,CAFU,DDFU,NHFU **Mating Type:** AI **Registration Level:** HBR
BASIN RAINMAKER 2704[#] PAPA EQUATOR 2928[#]
BASIN RAINMAKER 4404^{PV} ARDROSSAN EQUATOR A241^{PV}
BASIN JOY 1036[#] ARDROSSAN PRINCESS W38^{PV}
SIRE: USA19590500 ELLINGSON RANGELAND^{PV} **DAM:** SJQJ79 BLACK ANGUS DREAM J79[#]
CTS REMEDY 1T01[#] ARDROSSAN ADMIRAL A2^{PV}
EA EMBLYNETTE 7009[#] VERMONT DREAM D441[#]
EA EMBLYNETTE 5241[#] VERMONT DREAM X215[#]

TACE	Mid December 2025 TransTasman Angus Cattle Evaluation																		
	CEDir	CEDtrs	GL	BW	200	400	600	MCW	MBC	MCH	Milk	SS	CWT	EMA	Rib	P8	RBY	IMF	DOC
EBV	-1.0	-0.1	-2.4	+5.2	+52	+94	+124	+130	+0.38	+9.9	+10	+1.6	+76	+4.9	-2.8	-4.6	+1.4	+2.9	+30
Acc	66%	56%	83%	82%	83%	81%	81%	78%	64%	74%	75%	79%	70%	70%	70%	70%	62%	74%	76%
Perc	78	80	80	77	48	49	42	14	23	19	94	70	30	68	94	97	6	37	18

Traits Observed: GL,BWT,200WT,600WT(x2),SC,Scan(EMA,Rib,Rump,IMF),DOC,Genomics

Black Angus Dream J79 is the 13 year old dam which has produced Rangeland V273. Dream J79's grand daughter, Black Angus Dream P13 produced an Australian Record Priced yearling son selling for \$110,000 in 2023. Dream J79 is going strong and will deliver her 12th natural calf in 2026.

DOCILITY ST★R RATING



Scrotal Circumference: 39.5cm

KPI
126

Age: 22.5 months

Purchaser..... \$.....

Lot 16 BLACK ANGUS MONTY V313[#] Ident: SJQ24V313

Born: 18/04/2024 **Genetic Status:** AMFU,CAFU,DDFU,NHFU **Mating Type:** AI **Registration Level:** HBR
TUWHARETOA REGENT D145^{PV} EF COMPLEMENT 8088^{PV}
DUNOON HIGHPOINT H744^{SV} BLACK ANGUS COMPLEMENT L51^{SV}
DUNOON ANGUISH D202[#] BLACK ANGUS EXPO J119[#]
SIRE: BLAM186 KNOWLA MONTY M186^{PV} **DAM:** SJQQ131 BLACK ANGUS KAYE Q131[#]
WATTLETOP SITZ 458N E111^{SV} KENNY'S CREEK EQUATOR J222^{SV}
KNOWLA PANDA H119^{SV} BLACK ANGUS KAYE N247[#]
KNOWLA PANDA A49[#] BLACK ANGUS KAYE E25[#]

TACE	Mid December 2025 TransTasman Angus Cattle Evaluation																		
	CEDir	CEDtrs	GL	BW	200	400	600	MCW	MBC	MCH	Milk	SS	CWT	EMA	Rib	P8	RBY	IMF	DOC
EBV	-0.1	+5.0	-4.2	+3.9	+53	+94	+128	+111	+0.31	+9.4	+22	+3.2	+80	+2.3	+0.2	+1.1	+0.1	+2.4	+29
Acc	55%	48%	82%	75%	71%	69%	75%	68%	46%	49%	63%	74%	61%	60%	62%	62%	56%	64%	63%
Perc	73	33	54	49	44	48	33	36	41	27	19	17	20	90	44	27	65	49	18

Traits Observed: GL,BWT,200WT,600WT(x2),SC,Scan(EMA,Rib,Rump,IMF),DOC

Another Knowla Monty son from a productive "Selwood" daughter. Moderate Birth Weight, Large Scrotal and Positive Fat. 4.5 Star Docility Rating.

DOCILITY ST★R RATING



Scrotal Circumference: 42cm

KPI
161

Age: 22 months

Purchaser..... \$.....

Lot 17 BLACK ANGUS DUSTY MARTIN V42[#] Ident: SJQ24V42

Born: 01/05/2024 **Genetic Status:** AMFU,CAFU,DDFU,NHFU **Mating Type:** Natural **Registration Level:** HBR
G A R PROPHET^{SV} MATAURI REALITY 839[#]
CLUNES CROSSING DUSTY M13^{PV} STONEY POINT REALITY M918^{PV}
CLUNES CROSSING GLORIOUS G1^{SV} STONEY POINT DREAM F302^{PV}
SIRE: SJQR608 BLACK ANGUS DUSTY MARTIN R608^{PV} **DAM:** SYAQ388 STONEY POINT YANKEE QUEEN Q388^{PV}
G A R ANTICIPATION[#] KOUPALS B&B IDENTITY^{SV}
YOOTHAMURRA L81^{SV} STONEY POINT YANKEE QUEEN N904^{PV}
LAWSON'S DINKY DI E1121^{SV} STONEY POINT YANKEE QUEEN G257^{SV}

TACE	Mid December 2025 TransTasman Angus Cattle Evaluation																		
	CEDir	CEDtrs	GL	BW	200	400	600	MCW	MBC	MCH	Milk	SS	CWT	EMA	Rib	P8	RBY	IMF	DOC
EBV	+1.2	+3.3	-7.8	+4.6	+59	+99	+121	+93	+0.22	+8.6	+16	+1.0	+67	+7.5	-1.8	-1.6	+0.2	+2.2	+21
Acc	59%	52%	72%	74%	74%	72%	74%	71%	49%	54%	65%	74%	64%	63%	64%	65%	56%	68%	67%
Perc	64	51	9	65	20	33	48	64	68	42	57	86	54	37	85	72	59	54	45

Traits Observed: BWT,200WT,400WT,600WT,SC,Scan(EMA,Rib,Rump,IMF),DOC

Dusty Martin V42 is the first R608 son in this sale. V42's dam was purchased for \$14,000 as a mated heifer at the Stoney Point dispersal. V42 ranks in the Top 10% of the Angus breed for Short Gestation and is suitable for heifer joining. Top 20-34% for 200 Growth, 400 Growth and Feed Efficiency. 4.5 Star Docility Rating.

DOCILITY ST★R RATING



Scrotal Circumference: 39cm

KPI
140

Age: 21.5 months

Purchaser..... \$.....

20% 50%

**Lot 18 BLACK ANGUS BLOCKBUSTER V25[#]****Ident: SJQ24V25****Born:** 12/04/2024**Genetic Status:** AMFU,CAFU,DDFU,NHFU**Mating Type:** AI**Registration Level:** HBRMATAURI REALITY 839[#]MILWILLAH REALITY K12^{PV}MILWILLAH BARUNAH H8^{SV}MATAURI REALITY 839[#]GLENCH-JK MAKAHU M602^{SV}GLENCH-JK ANN K615^{SV}**SIRE: NENM367 KAROO MAIN EVENT M367^{SV}****DAM: SJQR20 BLACK ANGUS JENNIFER R20[#]**ARDROSSAN EQUATOR A241^{PV}KAROO DORIS G34[#]KAROO DORIS Y137^{SV}BOORAGUL WT458N K11^{SV}BLACK ANGUS JENNIFER P289[#]BLACK ANGUS JENNIFER L211[#]

TACE	Mid December 2025 TransTasman Angus Cattle Evaluation																		
	CEDir	CEDtrs	GL	BW	200	400	600	MCW	MBC	MCH	Milk	SS	CWT	EMA	Rib	P8	RBY	IMF	DOC
EBV	+2.8	+2.3	-5.4	+4.2	+48	+91	+124	+110	+0.36	+9.2	+19	+2.7	+65	+4.7	+0.3	+0.6	+0.2	+2.3	+20
Acc	58%	50%	83%	73%	70%	69%	70%	67%	42%	45%	64%	66%	61%	60%	62%	62%	56%	63%	65%
Perc	50	61	35	56	68	57	42	37	28	31	33	30	61	71	41	35	59	51	50

Traits Observed: GL,BWT,200WT,400WT,600WT,SC,Scan(EMA,Rib,Rump,IMF)

Blockbuster V25 is suitable for heifer joining and offers Positive Fat. His sire, Karoo Main Event is highly proven to be breed elite for Foot Scores, Positive Fat and Calving Ease. Main Event has been used by AI for 4 x consecutive seasons at GBA. His oldest daughters have come through the dry seasons in good shape and will be exceptional breeders into the future.

DOCILITY ST★R RATING**Scrotal Circumference:** 41cm**KPI**
149**Age:** 22 months**Purchaser**..... \$.....**Lot 19 BLACK ANGUS DUSTY MARTIN V101[#]****Ident: SJQ24V101****Born:** 09/06/2024**Genetic Status:** AMFU,CAFU,DDFU,NHFU**Mating Type:** Natural**Registration Level:** APRG A R PROPHET^{SV}CLUNES CROSSING DUSTY M13^{PV}CLUNES CROSSING GLORIOUS G1^{SV}VISIONTOPLINE ROYAL STOCKMAN[#]VISION UNANIMOUS 1418^{PV}VISION EDELLA 665[#]**SIRE: SJQR608 BLACK ANGUS DUSTY MARTIN R608^{PV}****DAM: SJQQ25 BLACK ANGUS WILCOOLA Q25[#]**G A R ANTICIPATION[#]YOOHAMURRA L81^{SV}LAWSON'S DINKY DI E1121^{SV}JAROBEE F119^{SV}BLACK ANGUS WILCOOLA K229[#]BLACK ANGUS WILCOOLA E87[#]

TACE	Mid December 2025 TransTasman Angus Cattle Evaluation																		
	CEDir	CEDtrs	GL	BW	200	400	600	MCW	MBC	MCH	Milk	SS	CWT	EMA	Rib	P8	RBY	IMF	DOC
EBV	-1.3	+2.3	-7.6	+6.2	+64	+106	+127	+104	+0.15	+8.1	+9	+2.6	+72	+7.2	-1.7	-2.7	+0.7	+1.5	+13
Acc	54%	47%	68%	73%	69%	70%	73%	67%	47%	46%	60%	72%	60%	58%	60%	60%	54%	62%	61%
Perc	80	61	11	90	9	17	36	46	84	51	95	33	39	40	83	86	30	71	79

Traits Observed: BWT,200WT,400WT,600WT,SC,Scan(EMA,Rib,Rump,IMF)

Mid June drop. Dusty Martin V101 ranks in the Top 8-23% of the Angus breed for Short Gestation, 200 Growth, 400 Growth, Days to Calving and Feed Efficiency. His sire, Black Angus Dusty Martin R608 is proving to be a great producer of productive females.

DOCILITY ST★R RATING**Scrotal Circumference:** 41cm**KPI**
145**Age:** 20.5 months**Purchaser**..... \$.....**Lot 20 BLACK ANGUS ROCKSTAR V52[#]****Ident: SJQ24V52****Born:** 15/05/2024**Genetic Status:** AMFU,CAFU,DDFU,NHFU**Mating Type:** Natural**Registration Level:** HBRG A R PROPHET^{SV}BALDRIDGE BEAST MODE B074^{PV}BALDRIDGE ISABEL Y69[#]MATAURI REALITY 839[#]GLENCH-JK MAKAHU M602^{SV}GLENCH-JK ANN K615^{SV}**SIRE: SJQR70 BLACK ANGUS BEAST MODE R70^{SV}****DAM: SJQR63 BLACK ANGUS WHISTLING BIRD R63[#]**BLACK ANGUS BRAMBUIE F197^{SV}BLACK ANGUS EMPRESS J257[#]BLACK ANGUS EMPRESS F171[#]BLACK ANGUS UNLIMITED D11^{SV}BLACK ANGUS WHISTLING BIRD G49[#]BLACK ANGUS WHISTLING BIRD E41[#]

TACE	Mid December 2025 TransTasman Angus Cattle Evaluation																		
	CEDir	CEDtrs	GL	BW	200	400	600	MCW	MBC	MCH	Milk	SS	CWT	EMA	Rib	P8	RBY	IMF	DOC
EBV	-1.4	-1.6	-2.8	+5.7	+56	+90	+112	+107	+0.27	+7.4	+13	+2.7	+62	+4.3	-1.7	-3.3	+0.7	+1.4	+33
Acc	56%	49%	67%	73%	69%	70%	73%	67%	45%	46%	59%	72%	59%	57%	59%	59%	53%	61%	61%
Perc	80	88	76	84	32	61	68	42	53	66	80	30	69	75	83	91	30	73	11

Traits Observed: BWT,200WT,400WT,600WT,SC,Scan(EMA,Rib,Rump,IMF),DOC

Black Angus Beast Mode R70 "Rockstar" sons are rock solid for Feet, Docility and Type. Rockstar V52 earns his 4.5 Star Docility Rating. He ranks in the Top 7% of the Angus breed for Feed Efficiency. Top 11% for Docility.

DOCILITY ST★R RATING**Scrotal Circumference:** 40cm**KPI**
126**Age:** 21 months**Purchaser**..... \$.....

20% 50%



GLATZ BLACK ANGUS



VICTORIA

With 20 years of sales in SA and Victoria, Glatz bulls are:

- high performing,
- structurally sound, and
- docile.
- generationally bred to be
- robust, muscular and
- profit-driven.
- ideal for self replacing
- herds.
- guaranteed for 3 Years.

→ **VIC BEEF WEEK**
WEDNESDAY FEBRUARY 4 2026
BETWEEN 9.00AM - 4.00PM

→ **VIC BULL SALE**
WEDNESDAY FEBRUARY 18 2026
AT 1.00PM (AEST)

ON PROPERTY - COROONA
299 CAROONA LANE, BRANXHOLME VIC

CONTACT BEN & SAMANTHA GLATZ

Mobile: 0407 712 455 **Email:** glatzblackangus@gmail.com

glatzblackangus.com





Lot 21 BLACK ANGUS MOE V349# Ident: SJQ24V349

Born: 25/04/2024 **Genetic Status:** AMFU,CAFU,DDF,NHFU **Mating Type:** AI **Registration Level:** HBR
 TE MANIA CALAMUS C46^{SV} DUNOON GABBA G548^{PV}
 TE MANIA F0734^{SV} STONEY POINT LANCELOT L07^{SV}
 TE MANIA DANDLOO D700# STONEY POINT UNDULY G233#
SIRE: GTNM6 CHILTERN PARK MOE M6^{PV} **DAM: SJQ6 BLACK ANGUS JANE Q6#**
 HIDDEN VALLEY TIMEOUT A45^{SV} BLACK ANGUS EQUATOR A241 H11^{SV}
 STRATHEWEN TIMEOUT JADE F15^{PV} BLACK ANGUS JANE N163#
 STRATHEWEN 1407 JADE C05^{PV} BLACK ANGUS JANE K91#

TACE	Mid December 2025 TransTasman Angus Cattle Evaluation																		
	CEDir	CEDtrs	GL	BW	200	400	600	MCW	MBC	MCH	Milk	SS	CWT	EMA	Rib	P8	RBY	IMF	DOC
EBV	+4.1	+1.6	-1.7	+3.7	+57	+100	+136	+91	+0.20	+8.3	+27	+2.9	+87	+7.2	-0.5	+0.8	+0.2	+2.4	+29
Acc	62%	56%	83%	74%	71%	70%	75%	69%	52%	54%	65%	75%	64%	63%	65%	65%	59%	66%	65%
Perc	38	68	87	44	28	30	20	67	73	47	3	24	9	40	60	32	59	49	20

Traits Observed: GL,BWT,200WT,600WT(x2),SC,Scan(EMA,Rib,Rump,IMF),DOC

#2 ranked KPI bull in the sale. The dam of Moe V349 produced a \$24,000 son selling to Nicolai Farms in 2023. She also produced a \$15,000 son selling to Stu Childs in 2025. Moe V349 is a heifer joining option that ranks within the Top 50% of the Angus breed for 16 x individual traits. 4.5 Star Docility Rating.

DOCILITY ST★R RATING



Scrotal Circumference: 42cm

KPI
202

Age: 22 months

Purchaser..... \$.....

Lot 22 BLACK ANGUS NATIONWIDE V310# Ident: SJQ24V310

Born: 18/04/2024 **Genetic Status:** AMFU,CAFU,DDFU,NHFU **Mating Type:** AI **Registration Level:** HBR
 G A R INGENUITY# WATTLETOP SITZ 458N E111^{SV}
 H P C A INTENSITY# BOORAGUL WT458N K11^{SV}
 G A R PREDESTINED 287L# BOORAGUL GLAZE G140#
SIRE: NORN432 RENNYLEA NATIONWIDE N432^{PV} **DAM: SJQN149 BLACK ANGUS WHISTLING BIRD N149#**
 TE MANIA BERKLEY B1^{PV} EF COMPLEMENT 8088^{PV}
 RENNYLEA H367^{SV} BLACK ANGUS WHISTLING BIRD L11#
 RENNYLEA F228# BLACK ANGUS WHISTLING BIRD J43#

TACE	Mid December 2025 TransTasman Angus Cattle Evaluation																		
	CEDir	CEDtrs	GL	BW	200	400	600	MCW	MBC	MCH	Milk	SS	CWT	EMA	Rib	P8	RBY	IMF	DOC
EBV	+4.3	+6.3	-6.1	+2.7	+56	+99	+120	+106	+0.37	+8.3	+18	+1.8	+79	+6.3	-0.8	-1.5	+0.6	+1.6	+27
Acc	58%	51%	82%	74%	70%	69%	74%	67%	47%	49%	64%	73%	61%	60%	62%	62%	56%	63%	63%
Perc	36	20	25	24	31	33	50	44	25	47	44	63	22	51	67	70	35	69	26

Traits Observed: GL,BWT,200WT,600WT(x2),SC,Scan(EMA,Rib,Rump,IMF),DOC

Nationwide V310's dam produced a \$40,000 son in 2023. The Whistling Bird females have been exceptional at GBA. V310 is an elite heifer joining sire. He ranks within the Top 51% of the Angus breed for a whopping 19 x individual traits. 4.5 Star Docility Rating.

DOCILITY ST★R RATING



Scrotal Circumference: 41cm

KPI
174

Age: 22 months

Purchaser..... \$.....

Lot 23 BLACK ANGUS NATIONWIDE V266# Ident: SJQ24V266

Born: 07/04/2024 **Genetic Status:** AMFU,CAFU,DDFU,NHFU **Mating Type:** AI **Registration Level:** APR
 G A R INGENUITY# ARDROSSAN EQUATOR A241^{PV}
 H P C A INTENSITY# BLACK ANGUS EQUATOR A241 H11^{SV}
 G A R PREDESTINED 287L# BLACK ANGUS X56 WILCOOLA D101^{SV}
SIRE: NORN432 RENNYLEA NATIONWIDE N432^{PV} **DAM: SJQL59 BLACK ANGUS ENTERPRISE L59#**
 TE MANIA BERKLEY B1^{PV} BLACK ANGUS BRAMBUIE F197^{SV}
 RENNYLEA H367^{SV} BLACK ANGUS ENTERPRISE J203#
 RENNYLEA F228# BLACK ANGUS ENTERPRISE G167#

TACE	Mid December 2025 TransTasman Angus Cattle Evaluation																		
	CEDir	CEDtrs	GL	BW	200	400	600	MCW	MBC	MCH	Milk	SS	CWT	EMA	Rib	P8	RBY	IMF	DOC
EBV	+1.2	+4.9	-5.6	+4.7	+60	+102	+127	+118	+0.35	+8.7	+17	+1.1	+82	+6.4	-0.1	+0.0	+0.6	+0.8	+24
Acc	59%	52%	83%	75%	71%	70%	75%	68%	45%	47%	65%	74%	62%	61%	62%	62%	57%	64%	64%
Perc	64	34	32	67	17	26	36	26	30	39	48	84	17	50	51	45	35	86	34

Traits Observed: GL,BWT,200WT,600WT(x2),SC,Scan(EMA,Rib,Rump,IMF),DOC

Nationwide V266 ranks within the Top 50% of the Angus breed for 18 individual traits. His full brother sold to Tim Legoe for \$14,000 in 2025.

DOCILITY ST★R RATING



Scrotal Circumference: 39cm

KPI
160

Age: 22.5 months

Purchaser..... \$.....

20% 50%

**Lot 24 BLACK ANGUS RANGELAND V258[#]****Ident: SJQ24V258****Born:** 06/04/2024 **Genetic Status:** AMFU,CAFU,DDFU,NHFU
BASIN RAINMAKER 2704[#]
BASIN RAINMAKER 4404^{PV}
BASIN JOY 1036[#]**Mating Type:** AI **Registration Level:** HBR
MILWILLAH ELEVATOR H76^{PV}
PINORA LEVI L73[#]
PINORA LILA G68[#]**SIRE: USA19590500 ELLINGSON RANGELAND^{PV}****DAM: SJQQ172 BLACK ANGUS WHISTLING BIRD Q172[#]**CTS REMEDY 1T01[#]
EA EMBLYNETTE 7009[#]
EA EMBLYNETTE 5241[#]BLACK ANGUS NEWSLINE B37^{SV}
BLACK ANGUS WHISTLING BIRD E41[#]
BLACK ANGUS WHISTLING BIRD A3[#]

TACE	Mid December 2025 TransTasman Angus Cattle Evaluation																		
	CEDir	CEDtrs	GL	BW	200	400	600	MCW	MBC	MCH	Milk	SS	CWT	EMA	Rib	P8	RBY	IMF	DOC
EBV	-3.4	+2.0	-3.3	+7.0	+60	+101	+130	+127	+0.28	+7.9	+14	+2.0	+78	+7.1	-1.5	-3.3	+1.7	-0.1	+25
Acc	56%	44%	68%	73%	70%	69%	73%	67%	39%	43%	61%	72%	60%	58%	60%	59%	54%	60%	64%
Perc	88	64	69	96	17	27	30	16	50	54	74	55	24	42	80	91	3	96	33

Traits Observed: BWT,200WT,600WT(x2),SC,Scan(EMA,Rib,Rump,IMF),DOC

Rangeland V258 is a twin - his twin brother sells at Lot 59. You have not yet seen the best of this fellow. Another performance sire endorsing the Whistling Bird cow family. V258 ranks in the Top 3% of the Angus breed for Retail Beef Yield. Top 7-33% for 200 Growth, 400 Growth, 600 Growth, Mature Body Condition, Docility, Carcase Weight and Feed Efficiency. 4.5 Star Docility Rating.

DOCILITY ST★R RATING

Scrotal Circumference: 40.5cm

KPI
149

Age: 22.5 months

Purchaser..... \$.....**Lot 25 BLACK ANGUS BLOCKBUSTER V242[#]****Ident: SJQ24V242****Born:** 04/04/2024 **Genetic Status:** AMFU,CAFU,DDFU,NHFU
MATAURI REALITY 839[#]
MILWILLAH REALITY K12^{PV}
MILWILLAH BARUNAH H8^{SV}**Mating Type:** AI **Registration Level:** APR
MATAURI REALITY 839[#]
GLENDOCH-JK MAKAHU M602^{SV}
GLENDOCH-JK ANN K615^{SV}**SIRE: NENM367 KAROO MAIN EVENT M367^{SV}****DAM: SJQ22T54 BLACK ANGUS ENTERPRISE T54[#]**ARDROSSAN EQUATOR A241^{PV}
KAROO DORIS G34[#]
KAROO DORIS Y137^{SV}LD CAPITALIST 316^{PV}
BLACK ANGUS ENTERPRISE P53[#]
BLACK ANGUS ENTERPRISE L125[#]

TACE	Mid December 2025 TransTasman Angus Cattle Evaluation																		
	CEDir	CEDtrs	GL	BW	200	400	600	MCW	MBC	MCH	Milk	SS	CWT	EMA	Rib	P8	RBY	IMF	DOC
EBV	+1.2	+3.3	-4.2	+4.2	+47	+90	+117	+108	+0.39	+8.9	+18	+2.5	+63	+4.3	+0.0	+0.4	+0.0	+3.0	+18
Acc	59%	51%	83%	74%	70%	70%	73%	67%	42%	46%	63%	73%	61%	60%	62%	62%	56%	63%	64%
Perc	64	51	54	56	71	59	58	40	21	35	41	37	66	75	49	38	70	35	60

Traits Observed: GL,BWT,200WT(x2),400WT,600WT,SC,Scan(EMA,Rib,Rump,IMF),DOC

Blockbuster V252 is from a first calving 2yo heifer. A heifer joining option with balanced data including Positive Fat. His sire, Karoo Main Event is a proven sire who breed elite for Foot Structure, Positive Fat and Calving Ease.

DOCILITY ST★R RATING

Scrotal Circumference: 38.5cm

KPI
126

Age: 22.5 months

Purchaser..... \$.....**Lot 26 BLACK ANGUS ACCELERATE V332[#]****Ident: SJQ24V332****Born:** 21/04/2024 **Genetic Status:** AMFU,CAFU,DDFU,NHFU
KOUPL ADVANCE 28[#]
ELLINGSON ACCELERATE 5264^{PV}
EA EMBLYNETTE 3361[#]**Mating Type:** Natural **Registration Level:** HBR
EF COMMANDO 1366^{PV}
BALDRIDGE 38 SPECIAL^{PV}
BALDRIDGE ISABEL Y69[#]**SIRE: WKG21S28 GANDY ACCELERATE S28^{SV}****DAM: SJQ22T10 BLACK ANGUS PRIMROSE T10[#]**MAR INNOVATION 251^{PV}
DIAMOND ONE INNOVATION P34[#]
DIAMOND TREE RESERVE L147[#]PRIME JUGGERNAUT J15^{SV}
STONE POINT PRIMROSE N52^{SV}
STONE POINT PRIMROSE K253^{SV}

TACE	Mid December 2025 TransTasman Angus Cattle Evaluation																		
	CEDir	CEDtrs	GL	BW	200	400	600	MCW	MBC	MCH	Milk	SS	CWT	EMA	Rib	P8	RBY	IMF	DOC
EBV	+3.5	+6.2	-6.7	+5.0	+57	+102	+135	+124	+0.21	+7.7	+18	+1.6	+80	+2.0	+0.8	+0.3	+0.0	+0.9	+17
Acc	55%	46%	67%	72%	68%	68%	71%	65%	41%	45%	59%	71%	58%	57%	58%	59%	51%	61%	60%
Perc	43	21	18	73	25	25	21	19	71	58	41	70	19	92	31	40	70	84	63

Traits Observed: BWT,200WT(x2),400WT,600WT,SC,Scan(EMA,Rib,Rump,IMF),DOC

The first of the Gandy Accelerate sons to sell. Accelerate progeny stand out for their overall type and extra body length in addition to curve bending birth to growth. V332 is from a first calving 2yo heifer and is an elite heifer joining prospect. His grand dam produced an 'A' grader son in this sale at Lot 12. Accelerate V332 ranks inside the Top 25% of the Angus breed for Calving Ease Daughters, Gestation Length, 200 Growth, 400 Growth, 600 Growth, Days to Calving and Carcase Weight. Positive Fat.

DOCILITY ST★R RATING

Scrotal Circumference: 36cm

KPI
158

Age: 22 months

Purchaser..... \$.....

20% 50%

**Lot 27 BLACK ANGUS WATTLE STREET V29^{SV}****Ident: SJQ24V29****Born:** 17/04/2024**Genetic Status:** AMFU,CAFU,DDFU,NHFU**Mating Type:** AI**Registration Level:** HBREF COMPLEMENT 8088^{PV}PA POWER TOOL 9108^{SV}BLACK ANGUS COMPLEMENT L51^{SV}KO 9108 KRONE K122^{SV}BLACK ANGUS EXPO J119[#]KO MOONGARRA F129^{PV}**SIRE: SJQQ127 BLACK ANGUS WATTLE STREET Q127^{SV}****DAM: SYAQ015 STONEY POINT EMBLYNETTE Q015[#]**WITHERSWOOD PERFORMER E49^{PV}ELLINGSON IDENTITY 9104^{SV}BLACK ANGUS MST K53[#]ANVIL EMBLYNETTE M089[#]BLACK ANGUS CLEOPATRA D25[#]ANVIL EMBLYNETTE E179^{SV}

TACE	Mid December 2025 TransTasman Angus Cattle Evaluation																		
	CEDir	CEDtrs	GL	BW	200	400	600	MCW	MBC	MCH	Milk	SS	CWT	EMA	Rib	P8	RBY	IMF	DOC
EBV	-6.0	+3.8	+0.8	+6.3	+54	+97	+130	+99	+0.23	+10.2	+16	+3.0	+85	+1.6	-0.6	+1.8	+0.2	+0.9	+29
Acc	65%	55%	83%	82%	83%	81%	81%	78%	69%	76%	74%	78%	70%	70%	70%	71%	61%	74%	76%
Perc	95	46	98	91	38	39	30	54	65	16	56	22	12	93	63	18	59	84	19

Traits Observed: GL,BWT,200WT(x2),400WT,DOC,Genomics

DOCILITY ST★R RATING**KPI**
143

Another impressive Wattle Street from a productive Krone daughter. Wattle Street sons impress our commercial clients for being trouble free and producers of heavy weaners. Wattle Street V29 ranks in the Top 3% of the Angus breed for Foot Scores. Top 9% for Days to Calving. Positive Fat.

Scrotal Circumference: 39cm**Age:** 22 months**Purchaser**..... \$.....**Lot 28 BLACK ANGUS TOM STEWART V89[#]****Ident: SJQ24V89****Born:** 01/06/2024**Genetic Status:** AMFU,CAFU,DDFU,NHFU**Mating Type:** Natural**Registration Level:** HBRV A R DISCOVERY 2240^{PV}KM BROKEN BOW 002^{PV}LANDFALL NEW GROUND N90^{PV}VARILEK GEDDES 7068^{PV}LANDFALL ELSA L88^{PV}VARILEK GOLDIE 5051 506[#]**SIRE: SJQ22T407 BLACK ANGUS TOM STEWART T407^{PV}****DAM: SJQ21S16 BLACK ANGUS WHISTLING BIRD S16[#]**STONEY POINT POWER P114^{SV}KAROO KNOCKOUT K176^{SV}STONEY POINT YANKEE QUEEN R546^{PV}BLACK ANGUS WHISTLING BIRD Q33[#]STONEY POINT YANKEE QUEEN P263^{SV}BLACK ANGUS WHISTLING BIRD M5[#]

TACE	Mid December 2025 TransTasman Angus Cattle Evaluation																		
	CEDir	CEDtrs	GL	BW	200	400	600	MCW	MBC	MCH	Milk	SS	CWT	EMA	Rib	P8	RBY	IMF	DOC
EBV	+1.4	+2.2	-7.2	+2.9	+50	+94	+108	+81	+0.36	+7.2	+16	+1.9	+61	+13.2	+1.3	+1.9	+1.2	+0.8	+35
Acc	56%	49%	67%	73%	68%	69%	72%	67%	47%	47%	59%	71%	59%	57%	58%	59%	52%	61%	61%
Perc	62	62	14	27	60	48	75	81	28	69	61	59	71	3	22	17	10	86	8

Traits Observed: BWT,200WT,400WT,600WT,SC,Scan(EMA,Rib,Rump,IMF),DOC

DOCILITY ST★R RATING

★★★★★

KPI
181

The first young son of Black Angus Tom Stewart T407 to sell (June Drop) - get on board with the Tom Stewart sons, you will not be disappointed. His progeny express tremendous muscle whilst being particularly sound and docile. Tom Stewart V89 is from a second calving dam and is suitable for heifer joining. He ranks in the Top 3% of the Angus breed for EMA. Top 8% for Docility. Top 14-28% for Gestation Length, Low Birth Weight, Mature Body Condition, Positive Rib Fat and Positive Rump Fat. 5 Star Docility Rating.

Scrotal Circumference: 39cm**Age:** 20.5 months**Purchaser**..... \$.....**Lot 29 BLACK ANGUS RANGELAND V268^{SV}****Ident: SJQ24V268****Born:** 07/04/2024**Genetic Status:** AMFU,CAFU,DDF,NHFU**Mating Type:** AI**Registration Level:** HBRBASIN RAINMAKER 2704[#]K C F BENNETT PERFORMER[#]BASIN RAINMAKER 4404^{PV}WITHERSWOOD PERFORMER E49^{PV}BASIN JOY 1036[#]WITHERSWOOD FLOWER C36^{SV}**SIRE: USA19590500 ELLINGSON RANGELAND^{PV}****DAM: SJQK53 BLACK ANGUS MST K53[#]**CTS REMEDY 1T01[#]ARDROSSAN ADMIRAL A2^{PV}EA EMBLYNETTE 7009[#]BLACK ANGUS CLEOPATRA D25[#]EA EMBLYNETTE 5241[#]BLACK ANGUS CLEOPATRA A1[#]

TACE	Mid December 2025 TransTasman Angus Cattle Evaluation																		
	CEDir	CEDtrs	GL	BW	200	400	600	MCW	MBC	MCH	Milk	SS	CWT	EMA	Rib	P8	RBY	IMF	DOC
EBV	-1.6	-3.3	-3.6	+7.2	+55	+92	+122	+96	+0.13	+7.5	+22	+2.8	+84	+8.8	-1.2	-2.2	+1.5	+1.6	+25
Acc	67%	56%	84%	82%	83%	82%	82%	79%	62%	72%	75%	80%	71%	71%	70%	71%	62%	74%	77%
Perc	81	93	64	97	33	53	46	60	87	63	18	27	13	24	75	80	5	69	31

Traits Observed: GL,BWT,200WT(x2),600WT,DOC,Genomics

DOCILITY ST★R RATING

★★★★

KPI
144

A Rangeland son from one of GBA's greatest females - the dam of Black Angus Wattle Street Q127. Rangeland V268 has the structure and pedigree to last forever.. He ranks in the Top 1% for Foot Scores. Top 5% for Retail Beef Yield. EMA @ 8.8 Actual Birth Weight - 39.5kg.

Scrotal Circumference: 37.5cm**Age:** 22.5 months**Purchaser**..... \$.....

20% 50%



Lot 30 BLACK ANGUS RANGELAND V218[#]

Ident: SJQ24V218

Born: 31/03/2024

Genetic Status: AMFU,CAFU,DDFU,NHFU

Mating Type: AI

Registration Level: HBR

BASIN RAINMAKER 2704[#]

BLACK ANGUS COMPLEMENT L51^{SV}

BASIN RAINMAKER 4404^{PV}

BLACK ANGUS WATTLE STREET Q127^{SV}

BASIN JOY 1036[#]

BLACK ANGUS MST K53[#]

SIRE: USA19590500 ELLINGSON RANGELAND^{PV}

DAM: SJQ22T127 BLACK ANGUS MELISSA T127[#]

CTS REMEDY 1T01[#]

WILLOW FIELDS HANS H37^{PV}

EA EMBLYNETTE 7009[#]

BLACK ANGUS MELISSA P27[#]

EA EMBLYNETTE 5241[#]

BLACK ANGUS MELISSA M9[#]

TACE	Mid December 2025 TransTasman Angus Cattle Evaluation																		
	CEDir	CEDtrs	GL	BW	200	400	600	MCW	MBC	MCH	Milk	SS	CWT	EMA	Rib	P8	RBY	IMF	DOC
EBV	+3.8	+3.1	-5.3	+5.2	+62	+102	+137	+121	+0.19	+5.9	+18	+3.0	+83	+7.0	-1.5	-3.5	+1.4	+0.3	+30
Acc	56%	45%	82%	74%	69%	70%	73%	67%	38%	41%	60%	72%	60%	59%	60%	60%	54%	62%	63%
Perc	41	53	36	77	13	26	18	23	76	86	41	22	14	43	80	92	6	92	17

Traits Observed: GL,BWT,200WT(x2),400WT,600WT,SC,Scan(EMA,Rib,Rump,IMF),DOC

DOCILITY ST★R RATING



Scrotal Circumference: 41cm



194

Age: 22.5 months

Rangeland V218 is from a first calving 2yo heifer and is suitable for heifer joining. He will catch your eye for his power and dimension. He ranks within the Top 50% of the Angus breed for 14 x individual traits. 4.5 Star Docility Rating.

Purchaser..... \$.....

Lot 31 BLACK ANGUS DUSTY MARTIN V39[#]

Ident: SJQ24V39

Born: 30/04/2024

Genetic Status: AMFU,CAFU,DDFU,NHFU

Mating Type: Natural

Registration Level: HBR

G A R PROPHET^{SV}

KM BROKEN BOW 002^{PV}

CLUNES CROSSING DUSTY M13^{PV}

VARILEK GEDDES 7068^{PV}

CLUNES CROSSING GLORIOUS G1^{SV}

VARILEK GOLDIE 5051 506[#]

SIRE: SJQR608 BLACK ANGUS DUSTY MARTIN R608^{PV}

DAM: SJQ21S47 BLACK ANGUS ADELAIDE S47[#]

G A R ANTICIPATION[#]

BOORAGUL WT458N K11^{SV}

YOOHAMURRA L81^{SV}

BLACK ANGUS ADELAIDE N137[#]

LAWSON'S DINKY DI E1121^{SV}

BLACK ANGUS ADELAIDE L37[#]

TACE	Mid December 2025 TransTasman Angus Cattle Evaluation																		
	CEDir	CEDtrs	GL	BW	200	400	600	MCW	MBC	MCH	Milk	SS	CWT	EMA	Rib	P8	RBY	IMF	DOC
EBV	+1.1	+3.2	-6.6	+4.0	+57	+96	+117	+85	+0.17	+6.6	+14	+2.0	+67	+7.9	-1.4	-2.0	+0.5	+1.5	+18
Acc	55%	47%	69%	73%	69%	67%	68%	67%	49%	48%	59%	63%	59%	59%	61%	61%	54%	62%	62%
Perc	65	52	19	51	27	41	57	76	80	78	71	55	53	33	79	78	41	71	62

Traits Observed: BWT,200WT,400WT(x2),600WT,SC,Scan(EMA,Rib,Rump,IMF),DOC

DOCILITY ST★R RATING



Scrotal Circumference: 37.5cm



137

Age: 22 months

Dusty Martin V39 is suitable for heifer joining. Plenty of dimension as we expect from his sire in Dusty Martin R608. V39 ranks in the Top 16% of the Angus breed for Feed Efficiency. Top 19% for Short Gestation Length. 4.5 Star Docility Rating.

Purchaser..... \$.....

Lot 32 BLACK ANGUS ACCELERATE V368^{SV}

Ident: SJQ24V368

Born: 09/05/2024

Genetic Status: AMFU,CAFU,DDFU,NHFU

Mating Type: Natural

Registration Level: HBR

KOUPAL ADVANCE 28[#]

PAPA EQUATOR 2928[#]

ELLINGSON ACCELERATE 5264^{PV}

ARDROSSAN EQUATOR A241^{PV}

EA EMBLYNETTE 3361[#]

ARDROSSAN PRINCESS W38^{PV}

SIRE: WKG21S28 GANDY ACCELERATE S28^{SV}

DAM: SJQK161 BLACK ANGUS X56 WILCOOLA K161[#]

MAR INNOVATION 251^{PV}

SUMMITCREST HI FLYER 3B18[#]

DIAMOND ONE INNOVATION P34[#]

ROSSANDER WILCOOLA X56^{PV}

DIAMOND TREE RESERVE L147[#]

MERRIDALE WILCOOLA Q129+95[#]

TACE	Mid December 2025 TransTasman Angus Cattle Evaluation																		
	CEDir	CEDtrs	GL	BW	200	400	600	MCW	MBC	MCH	Milk	SS	CWT	EMA	Rib	P8	RBY	IMF	DOC
EBV	+6.2	+5.9	-8.4	+4.8	+63	+110	+138	+127	+0.11	+10.5	+14	+3.6	+85	-2.1	-4.0	-6.4	+0.9	-1.3	+13
Acc	65%	56%	82%	82%	83%	81%	81%	78%	62%	72%	74%	79%	70%	69%	69%	70%	61%	74%	75%
Perc	19	23	6	69	10	12	17	17	90	13	74	11	12	99	99	99	20	99	78

Traits Observed: BWT,SC,Scan(EMA,Rib,Rump,IMF),Genomics

DOCILITY ST★R RATING



Scrotal Circumference: 44cm



169

Age: 21.5 months

A truly elite, high performance, Calving Ease sire in Accelerate V368. His maternal pedigree is royal. 21 natural calves from his dam and grand dam. His dam produced Lot 2 in 2025 selling to Springwood Station for \$16,000. V368 is an 'A' Grade sire prospect with a great balance of Calving Ease, Growth and Fertility. All boxes ticked for a self replacing cow herd. 44cm Scrotal.

Purchaser..... \$.....

20% 50%

**Lot 33 BLACK ANGUS WATTLE STREET V298[#]****Ident: SJQ24V298****Born:** 14/04/2024**Genetic Status:** AMFU,CAFU,DDFU,NHFU**Mating Type:** AI**Registration Level:** APREF COMPLEMENT 8088^{PV}BLACK ANGUS COMPLEMENT L51^{SV}BLACK ANGUS EXPO J119[#]TE MANIA EMPEROR E343^{PV}STORTH OAKS JACK J7^{SV}STORTH OAKS G183[#]**SIRE: SJQQ127 BLACK ANGUS WATTLE STREET Q127^{SV}****DAM: SJQP155 BLACK ANGUS CHAMPAGNE P155[#]**WITHERSWOOD PERFORMER E49^{PV}BLACK ANGUS MST K53[#]BLACK ANGUS CLEOPATRA D25[#]BLACK ANGUS BODYBUILDER E45^{SV}BLACK ANGUS CHAMPAGNE H185[#]BLACK ANGUS CHAMPAGNE V22[#]

TACE	Mid December 2025 TransTasman Angus Cattle Evaluation																		
	CEDir	CEDtrs	GL	BW	200	400	600	MCW	MBC	MCH	Milk	SS	CWT	EMA	Rib	P8	RBY	IMF	DOC
EBV	-8.8	-0.5	-0.9	+6.7	+62	+109	+141	+122	+0.31	+9.6	+16	+3.4	+85	+11.4	+0.0	+0.1	+0.9	+0.6	+29
Acc	56%	47%	83%	74%	70%	69%	74%	68%	47%	45%	61%	73%	60%	58%	60%	60%	54%	62%	63%
Perc	98	83	93	94	12	13	14	21	41	24	57	14	12	8	49	43	20	89	19

Traits Observed: GL,BWT,200WT,600WT(x2),SC,Scan(EMA,Rib,Rump,IMF),DOC

#4 ranked KPI bull in the sale. Wattle Street V382 - a performance sire for the serious self replacing cow herds. His dam produced a \$23,000 son selling to Nicolai Farms in 2023. Wattle Street V382 ranks in the Top 8-20% of the Angus breed for 200 Growth, 400 Growth, 600 Growth, Scrotal Size, Docility, Carcase Weight, EMA and Retail Beef Yield. 43.5cm Scrotal. 4.5 Star Docility Rating.

DOCILITY ST★R RATING**Scrotal Circumference:** 43.5cm**KPI**
198**Age:** 22 months**Purchaser**..... \$.....**Lot 34 BLACK ANGUS ALBO V382^{SV}****Ident: SJQ24V382****Born:** 18/05/2024**Genetic Status:** AMFU,CAFU,DDFU,NHFU**Mating Type:** Natural**Registration Level:** HBRRENNYLEA L508^{PV}DUNOON PRIME MINISTER P758^{SV}DUNOON JAPARA M1008[#]MILWILLAH ELEVATOR H76^{PV}PINORA LEVI L73[#]PINORA LILA G68[#]**SIRE: SDF21S74 BULL OAK WELL PRIME MINISTER S74^{PV}****DAM: SJQP323 BLACK ANGUS DREAM P323[#]**SYDGEN TRUST 6228[#]BULL OAK WELL MELODY K7^{SV}BULL OAK WELL MELODY H50^{SV}BLACK ANGUS BRAMBUIE F197^{SV}BLACK ANGUS DREAM K207[#]VERMONT DREAM D441[#]

TACE	Mid December 2025 TransTasman Angus Cattle Evaluation																		
	CEDir	CEDtrs	GL	BW	200	400	600	MCW	MBC	MCH	Milk	SS	CWT	EMA	Rib	P8	RBY	IMF	DOC
EBV	-1.6	-1.1	-5.6	+5.6	+54	+94	+120	+125	+0.32	+7.5	+13	+4.0	+52	+10.0	-2.1	-1.1	+1.8	+1.1	+35
Acc	63%	55%	82%	82%	83%	81%	81%	78%	65%	75%	75%	78%	70%	68%	69%	70%	59%	73%	76%
Perc	81	86	32	83	40	50	52	19	38	63	77	6	88	15	89	64	2	80	8

Traits Observed: BWT,200WT,600WT(x2),SC,Scan(EMA,Rib,Rump,IMF),DOC,Genomics

Albo V382 - son of Bull Oak Well Prime Minister. His dam and grand dam have produced 17 natural calves to date. Albo V382 can boast performance indicators at the big end of town. Top 2% of the Angus breed for Retail Beef Yield. Top 6% for Scrotal Size. Top 7% for Foot Scores. Top 8% for Docility. 4.5 Star Docility Rating.

DOCILITY ST★R RATING**Scrotal Circumference:** 41cm**KPI**
161**Age:** 21 months**Purchaser**..... \$.....**Lot 35 BLACK ANGUS MAVERICK V388[#]****Ident: SJQ24V388****Born:** 21/05/2024**Genetic Status:** AMFU,CAFU,DDFU,NHFU**Mating Type:** Natural**Registration Level:** HBRBOOROOMOOKA UNDERTAKEN Y145^{PV}RENNYLEA EDMUND E11^{PV}LAWSON'S HENRY VIII Y5^{SV}K C F BENNETT PERFORMER[#]WITHERSWOOD PERFORMER E49^{PV}WITHERSWOOD FLOWER C36^{SV}**SIRE: SYAM07 STONEY POINT MOMENTUM M07^{PV}****DAM: SJQN101 BLACK ANGUS WILCOOLA N101[#]**WMR TIMELESS 458[#]STONEY POINT YANKEE QUEEN K32^{PV}STONEY POINT YANKEE QUEEN F153^{PV}ARDROSSAN EQUATOR A241^{PV}BLACK ANGUS WILLCOOLA H115[#]BLACK ANGUS NE X56 WILCOOLA C23^{SV}

TACE	Mid December 2025 TransTasman Angus Cattle Evaluation																		
	CEDir	CEDtrs	GL	BW	200	400	600	MCW	MBC	MCH	Milk	SS	CWT	EMA	Rib	P8	RBY	IMF	DOC
EBV	-2.3	-7.7	-2.0	+6.1	+53	+91	+127	+95	+0.28	+6.9	+23	+2.3	+82	+4.5	+3.0	+3.7	+0.0	+1.6	+16
Acc	59%	52%	70%	74%	71%	70%	75%	68%	43%	46%	63%	74%	61%	60%	62%	62%	57%	64%	64%
Perc	84	99	85	89	42	58	36	61	50	74	14	44	16	73	5	5	70	69	68

Traits Observed: BWT,200WT,600WT(x2),SC,Scan(EMA,Rib,Rump,IMF),DOC

Top 5% of the Angus breed for Positive Fat. Maverick V388's dam N101, grand dam H115 and great grand dam C23 are greats of the GBA herd - 32 progeny between them to date. V388 ranks in the Top 14% of the Angus breed for Milk. Top 16% for Carcase Weight. 4.5 Star Docility Rating.

DOCILITY ST★R RATING**Scrotal Circumference:** 38cm**KPI**
127**Age:** 21 months**Purchaser**..... \$.....

20% 50%

**Lot 36 BLACK ANGUS ACCELERATE V396[#]****Ident: SJQ24V396****Born:** 28/05/2024**Genetic Status:** AMFU,CAFU,DDFU,NHFU**Mating Type:** Natural**Registration Level:** HBRKOU PAL ADVANCE 28[#]ELLINGSON ACCELERATE 5264^{PV}EA EMBLYNETTE 3361[#]WATTLETOP SITZ 458N E111^{SV}BOORAGUL WT458N K11^{SV}BOORAGUL GLAZE G140[#]**SIRE: WKG21S28 GANDY ACCELERATE S28^{SV}****DAM: SJQN157 BLACK ANGUS DREAM N157[#]**MAR INNOVATION 251^{PV}DIAMOND ONE INNOVATION P34[#]DIAMOND TREE RESERVE L147[#]EF COMPLEMENT 8088^{PV}BLACK ANGUS DREAM L47[#]BLACK ANGUS DREAM J79[#]

TACE	Mid December 2025 TransTasman Angus Cattle Evaluation																		
	CEDir	CEDtrs	GL	BW	200	400	600	MCW	MBC	MCH	Milk	SS	CWT	EMA	Rib	P8	RBY	IMF	DOC
EBV	+6.7	+7.0	-6.8	+2.7	+54	+100	+128	+109	+0.19	+7.8	+20	+2.8	+79	+3.2	-0.5	-0.9	+0.2	+1.8	+37
Acc	53%	44%	66%	73%	69%	67%	73%	66%	41%	44%	59%	72%	58%	55%	58%	57%	51%	59%	60%
Perc	16	14	17	24	38	32	34	39	76	56	30	27	22	85	60	61	59	64	6

Traits Observed: BWT,200WT,600WT(x2),SC,Scan(EMA,Rib,Rump,IMF),DOC

#3 ranked KPI bull in the sale. Accelerate V396 is a Late May drop. Elite heifer joining option tracing back to the legendary Black Angus Dream J79. He ranks in the Top 6% of the Angus breed for Docility. Inside the Top 38% for a long list of traits including Calving Ease Direct, Calving Ease Daughters, Gestation Length, Low Birth Weight, 200 Growth, 400 Growth, 600 Growth, Milk, Days to Calving, Scrotal Size, Carcase Weight and Angus Breeding Index. Boom!

DOCILITY ST★R RATING

Scrotal Circumference: 40.5cm

KPI
201

Age: 20.5 months

Purchaser..... \$.....

Lot 37 BLACK ANGUS MONTY V286^{PV}**Ident: SJQ24V286****Born:** 11/04/2024**Genetic Status:** AMFU,CAFU,DDFU,NHFU**Mating Type:** AI**Registration Level:** HBRTUWHARETOA REGENT D145^{PV}DUNOON HIGHPOINT H744^{SV}DUNOON ANGUISH D202[#]MUSGRAVE BIG SKY^{PV}CLUDEN NEWRY BIG SKY M87^{SV}CLUDEN NEWRY ALICE F92^{SV}**SIRE: BLAM186 KNOWLA MONTY M186^{PV}****DAM: THCP190 CLUDEN NEWRY P190^{PV}**WATTLETOP SITZ 458N E111^{SV}KNOWLA PANDA H119^{SV}KNOWLA PANDA A49[#]MATAURI REALITY 839[#]CLUDEN NEWRY ARAWATEA M9^{SV}CLUDEN NEWRY ARAWATEA K156[#]

TACE	Mid December 2025 TransTasman Angus Cattle Evaluation																		
	CEDir	CEDtrs	GL	BW	200	400	600	MCW	MBC	MCH	Milk	SS	CWT	EMA	Rib	P8	RBY	IMF	DOC
EBV	-8.1	+2.7	-2.5	+6.2	+55	+96	+126	+106	+0.13	+8.9	+16	+3.1	+84	+3.2	-1.4	-0.2	+0.2	+2.5	+15
Acc	65%	57%	83%	82%	83%	81%	82%	79%	70%	81%	76%	80%	71%	71%	70%	72%	62%	75%	77%
Perc	97	58	79	90	34	41	38	43	87	36	61	20	13	85	79	49	59	46	70

Traits Observed: GL,BWT,200WT,600WT(x2),SC,Scan(EMA,Rib,Rump,IMF),DOC,Genomics

The dam of Monty V286 is one of Ben's favourite cows purchased from Cluden Newry, Tas. V286 ranks in the Top 5% of the Angus breed for Foot Scores. Top 13% for Carcase Weight. Top 20% for Scrotal Size. 4.5 Star Docility Rating.

DOCILITY ST★R RATING

Scrotal Circumference: 42.5cm

KPI
114

Age: 22 months

Purchaser..... \$.....

Lot 38 BLACK ANGUS NATIONWIDE V293[#]**Ident: SJQ24V293****Born:** 12/04/2024**Genetic Status:** AMFU,CAFU,DDFU,NHFU**Mating Type:** AI**Registration Level:** HBRG A R INGENUITY[#]H P C A INTENSITY[#]G A R PREDESTINED 287L[#]WATTLETOP SITZ 458N E111^{SV}BOORAGUL WT458N K11^{SV}BOORAGUL GLAZE G140[#]**SIRE: NORN432 RENNYLEA NATIONWIDE N432^{PV}****DAM: SJQN205 BLACK ANGUS WHISTLING BIRD N205[#]**TE MANIA BERKLEY B1^{PV}RENNYLEA H367^{SV}RENNYLEA F228[#]BLACK ANGUS UNLIMITED D11^{SV}BLACK ANGUS WHISTLING BIRD G49[#]BLACK ANGUS WHISTLING BIRD E41[#]

TACE	Mid December 2025 TransTasman Angus Cattle Evaluation																		
	CEDir	CEDtrs	GL	BW	200	400	600	MCW	MBC	MCH	Milk	SS	CWT	EMA	Rib	P8	RBY	IMF	DOC
EBV	+4.1	+4.9	-8.7	+3.9	+58	+101	+124	+120	+0.36	+8.9	+14	+0.8	+78	+2.6	-1.9	-2.6	+0.0	+2.3	+24
Acc	59%	52%	83%	75%	71%	70%	75%	69%	46%	48%	65%	75%	62%	61%	63%	62%	57%	63%	64%
Perc	38	34	5	49	24	28	42	24	28	36	74	90	23	89	86	85	70	51	37

Traits Observed: GL,BWT,200WT,600WT(x2),SC,Scan(EMA,Rib,Rump,IMF),DOC

The dam of Nationwide V293 has an outstanding track record for producing top notch sale bulls. A \$26,000 son selling to Goolagong Angus Stud in 2023. A \$14,000 son selling to Penola Park in 2024. A \$13,000 son selling to Hill Waters Farms in 2025. Nationwide V293 is an 'A' Class heifer joining option.

DOCILITY ST★R RATING

Scrotal Circumference: 38cm

KPI
146

Age: 22 months

Purchaser..... \$.....

20% 50%



Lot 39 BLACK ANGUS MONTY V311[#]

Ident: SJQ24V311

Born: 18/04/2024

Genetic Status: AMFU,CAFU,DDFU,NHFU

Mating Type: AI

Registration Level: APR

TUWHARETOA REGENT D145^{PV}
DUNOON HIGHPOINT H744^{SV}
DUNOON ANGUISH D202[#]

STONEY POINT EQUATION X66[#]
GALWAY EQUATION E16^{SV}
GALWAY SALLY A48[#]

SIRE: BLAM186 KNOWLA MONTY M186^{PV}

DAM: SJQJ271 BLACK ANGUS SCOTCH J271[#]

WATTLETOP SITZ 458N E111^{SV}
KNOWLA PANDA H119^{SV}
KNOWLA PANDA A49[#]

BLACK ANGUS NEWSLINE B37^{SV}
BLACK ANGUS SCOTCH F145[#]
BLACK ANGUS SCOTCH B67[#]

TACE	Mid December 2025 TransTasman Angus Cattle Evaluation																		
	CEDir	CEDtrs	GL	BW	200	400	600	MCW	MBC	MCH	Milk	SS	CWT	EMA	Rib	P8	RBY	IMF	DOC
EBV	-6.3	-3.0	-3.0	+6.7	+62	+102	+144	+126	+0.27	+10.3	+18	+4.3	+89	+4.6	-2.4	-1.5	+0.6	+2.1	+13
Acc	54%	48%	68%	74%	70%	69%	73%	67%	46%	49%	65%	72%	61%	60%	62%	62%	56%	63%	64%
Perc	95	92	73	94	12	26	11	18	53	15	44	4	8	72	92	70	35	56	77

Traits Observed: BWT,200WT,600WT(x2),SC,Scan(EMA,Rib,Rump,IMF),DOC

The dam of Monty V311 produced 14 natural calves at GBA including a set of triplets that she raised herself. A long line of productive cows behind Monty V311. He ranks in the Top 4% of the Angus breed for Scrotal Size. Top 8% for Carcase Weight. Top 12-26% for 200 Growth, 400 Growth and 600 Growth. Fertility, Growth and Longevity - essential components for self replacing cow herds. 4.5 Star Docility Rating.

DOCILITY ST★R RATING



Scrotal Circumference: 43.5cm

KPI
135

Age: 22 months

Purchaser..... \$.....

Lot 40 BLACK ANGUS RANGELAND V248[#]

Ident: SJQ24V248

Born: 04/04/2024

Genetic Status: AMFU,CAFU,DDFU,NHFU

Mating Type: AI

Registration Level: HBR

BASIN RAINMAKER 2704[#]
BASIN RAINMAKER 4404^{PV}
BASIN JOY 1036[#]

LAWSON'S TANK X1235[#]
LAWSON'S TANK F1686^{SV}
LAWSON'S ROCKY W129 A809^{PV}

SIRE: USA19590500 ELLINGSON RANGELAND^{PV}

DAM: SYAK676 STONEY POINT PRINCESS K676[#]

CTS REMEDY 1T01[#]
EA EMBLYNETTE 7009[#]
EA EMBLYNETTE 5241[#]

ARDROSSAN CONNECTION X15^{SV}
VERMONT PRINCESS E182[#]
ARDROSSAN PRINCESS U94[#]

TACE	Mid December 2025 TransTasman Angus Cattle Evaluation																		
	CEDir	CEDtrs	GL	BW	200	400	600	MCW	MBC	MCH	Milk	SS	CWT	EMA	Rib	P8	RBY	IMF	DOC
EBV	+4.4	+4.2	-6.6	+3.8	+44	+81	+110	+105	+0.14	+7.0	+18	+1.4	+63	+5.5	+0.2	-1.2	+0.9	+1.1	+23
Acc	56%	44%	82%	74%	70%	69%	74%	69%	39%	43%	62%	73%	61%	58%	59%	59%	54%	60%	61%
Perc	35	41	19	47	82	84	72	46	86	72	41	76	65	61	44	66	20	80	37

Traits Observed: GL,BWT,200WT,600WT(x2),SC,Scan(EMA,Rib,Rump,IMF),DOC

Rangeland V248 is a heifer joining option originating from the Ardrossan Princess cow family. The Princess cow family has proven to be one of the influential names within the Angus breed. Rangeland V248's dam produced Lot 7 in 2025 selling to Mt Beevor for \$12,000. 4.5 Star Docility Rating.

DOCILITY ST★R RATING



Scrotal Circumference: 40cm

KPI
122

Age: 22.5 months

Purchaser..... \$.....

Lot 41 BLACK ANGUS WATTLE STREET V290[#]

Ident: SJQ24V290

Born: 12/04/2024

Genetic Status: AMFU,CAFU,DDFU,NHFU

Mating Type: AI

Registration Level: HBR

EF COMPLEMENT 8088^{PV}
BLACK ANGUS COMPLEMENT L51^{SV}
BLACK ANGUS EXPO J119[#]

HYLINE RIGHT TIME 338[#]
K C F BENNETT PERFORMER[#]
K C F MISS 589 L182[#]

SIRE: SJQQ127 BLACK ANGUS WATTLE STREET Q127^{SV}

DAM: SJQM5 BLACK ANGUS WHISTLING BIRD M5[#]

WITHERSWOOD PERFORMER E49^{PV}
BLACK ANGUS MST K53[#]
BLACK ANGUS CLEOPATRA D25[#]

ARDROSSAN EQUATOR A241^{PV}
BLACK ANGUS WHISTLING BIRD J43[#]
BLACK ANGUS WHISTLING BIRD C103[#]

TACE	Mid December 2025 TransTasman Angus Cattle Evaluation																		
	CEDir	CEDtrs	GL	BW	200	400	600	MCW	MBC	MCH	Milk	SS	CWT	EMA	Rib	P8	RBY	IMF	DOC
EBV	-8.6	-1.1	-1.8	+6.1	+57	+101	+137	+117	+0.26	+7.6	+19	+3.3	+85	+6.6	+1.2	+2.5	+0.3	+0.7	+26
Acc	59%	51%	84%	76%	72%	71%	75%	69%	50%	48%	64%	75%	62%	61%	63%	62%	57%	64%	65%
Perc	98	86	87	89	27	28	18	28	56	61	37	15	12	47	23	12	53	87	28

Traits Observed: GL,BWT,200WT,600WT(x2),SC,Scan(EMA,Rib,Rump,IMF),DOC

Another impressive Wattle Street son. His dam is due on her 9th natural calf in 2026. She produced the top price bull in 2020 selling to Mark and Leah Jacob for \$17,000. She also produced a \$16,000 son selling to Springwood Station in 2025. Both are highly regarded cattle breeding operations. Wattle Street V290 ranks in the Top 12% of the Angus breed for Positive Fat and Carcase Weight. 4.5 Star Docility Rating. 43cm Scrotal.

DOCILITY ST★R RATING



Scrotal Circumference: 43cm

KPI
178

Age: 22 months

Purchaser..... \$.....

20% 50%



Lot 42 BLACK ANGUS LUMBERJACK V377#

Ident: SJQ24V377

Born: 15/05/2024

Genetic Status: AMFU,CAFU,DDFU,NHFU

Mating Type: Natural

Registration Level: HBR

G A R PROPHET^{SV}

COONAMBLE Z3^{PV}

BALDRIDGE BEAST MODE B074^{PV}

COONAMBLE ELEVATOR E11^{PV}

BALDRIDGE ISABEL Y69[#]

BANGADANG B31^{SV}

SIRE: WKGQ48 DIAMOND ONE BEAST MODE Q48^{SV}

DAM: SJQM117 BLACK ANGUS ROSEBUD M117[#]

AYRVALE BARTEL E7^{PV}

MORDALLUP NET WORTH C170^{SV}

DIAMOND TREE BARTEL L60[#]

BLACK ANGUS ROSEBUD F25[#]

DIAMOND TREE HOOVER DAM J88[#]

ROSSANDER ROSEBUD A306[#]

TACE	Mid December 2025 TransTasman Angus Cattle Evaluation																		
	CEDir	CEDtrs	GL	BW	200	400	600	MCW	MBC	MCH	Milk	SS	CWT	EMA	Rib	P8	RBY	IMF	DOC
EBV	-1.8	+3.8	-2.4	+4.2	+58	+100	+126	+120	+0.32	+8.7	+17	+0.1	+74	+7.0	-2.1	-2.3	+1.1	+1.9	+23
Acc	58%	50%	67%	74%	70%	69%	74%	68%	46%	47%	61%	74%	61%	59%	60%	61%	55%	62%	62%
Perc	82	46	80	56	22	31	38	24	38	40	54	97	35	43	89	81	13	61	41

Traits Observed: BWT,200WT,600WT(x2),SC,Scan(EMA,Rib,Rump,IMF),DOC

First of the Lumberjack sons for 2026. Lumberjack V377's dam has produced 8 calves including an outstanding \$14,000 son selling to Lachie Mumford in 2025. Her previous son sold to the Goodman Family in 2024. V377 is ranked inside the Top 50% of the Angus breed for 11 individual traits. 4.5 Star Docility Rating.

DOCILITY ST★R RATING



Scrotal Circumference: 36cm

KPI
133

Age: 21 months

Purchaser..... \$.....

Lot 43 BLACK ANGUS RANGELAND V289#

Ident: SJQ24V289

Born: 11/04/2024

Genetic Status: AMFU,CAFU,DDFU,NHFU

Mating Type: AI

Registration Level: HBR

BASIN RAINMAKER 2704[#]

TE MANIA EMPEROR E343^{PV}

BASIN RAINMAKER 4404^{PV}

MURDEDUKE KICKING K428^{PV}

BASIN JOY 1036[#]

MURDEDUKE E175^{PV}

SIRE: USA19590500 ELLINGSON RANGELAND^{PV}

DAM: SYAP417 STONEY POINT PANDA P417^{SV}

CTS REMEDY 1T01[#]

ELLINGSON IDENTITY 9104^{SV}

EA EMBLYNETTE 7009[#]

MURDEDUKE PANDA J106^{PV}

EA EMBLYNETTE 5241[#]

MURDEDUKE E121^{SV}

TACE	Mid December 2025 TransTasman Angus Cattle Evaluation																		
	CEDir	CEDtrs	GL	BW	200	400	600	MCW	MBC	MCH	Milk	SS	CWT	EMA	Rib	P8	RBY	IMF	DOC
EBV	+6.3	+8.0	-3.8	+3.0	+55	+96	+126	+118	+0.14	+8.2	+19	+1.9	+75	+4.8	-1.2	-5.0	+1.6	-0.2	+26
Acc	62%	51%	83%	76%	75%	73%	76%	72%	44%	50%	67%	76%	65%	65%	65%	66%	59%	69%	70%
Perc	19	8	61	29	35	41	37	27	86	50	34	59	32	70	75	98	4	97	29

Traits Observed: GL,BWT,200WT,600WT(x2),SC,Scan(EMA,Rib,Rump,IMF),DOC

Rangeland V289 is a high performing heifer joining prospect. His dam has also produced some lovely young females at GBA. V289 ranks in the Top 4% of the Angus breed for Retail Beef Yield. Top 8% for Calving Ease Daughters. Top 12-19% for Calving Ease Direct and Feed Efficiency. 4.5 Star Docility Rating.

DOCILITY ST★R RATING



Scrotal Circumference: 42cm

KPI
171

Age: 22 months

Purchaser..... \$.....

Lot 44 BLACK ANGUS BLOCKBUSTER V226^{SV}

Ident: SJQ24V226

Born: 01/04/2024

Genetic Status: AMFU,CAFU,DDFU,NHFU

Mating Type: AI

Registration Level: HBR

MATAURI REALITY 839[#]

KM BROKEN BOW 002^{PV}

MILWILLAH REALITY K12^{PV}

VARILEK GEDDES 7068^{PV}

MILWILLAH BARUNAH H8^{SV}

VARILEK GOLDIE 5051 506[#]

SIRE: NENM367 KAROO MAIN EVENT M367^{SV}

DAM: SJQ22T9 BLACK ANGUS DREAM T9[#]

ARDROSSAN EQUATOR A241^{PV}

STORTH OAKS JACK J7^{SV}

KAROO DORIS G34[#]

BLACK ANGUS DREAM R41[#]

KAROO DORIS Y137^{SV}

BLACK ANGUS DREAM J79[#]

TACE	Mid December 2025 TransTasman Angus Cattle Evaluation																		
	CEDir	CEDtrs	GL	BW	200	400	600	MCW	MBC	MCH	Milk	SS	CWT	EMA	Rib	P8	RBY	IMF	DOC
EBV	+2.1	+2.9	-7.6	+4.7	+54	+102	+134	+119	+0.34	+9.1	+19	+2.4	+71	+4.2	+1.2	+2.4	-0.5	+2.6	+21
Acc	59%	49%	83%	73%	70%	68%	69%	67%	42%	44%	63%	66%	61%	60%	61%	61%	56%	63%	64%
Perc	56	56	11	67	39	25	24	25	33	32	38	40	41	76	23	13	89	44	47

Traits Observed: GL,BWT,200WT,400WT,600WT,SC,Scan(EMA,Rib,Rump,IMF)

Blockbuster V226 is an elite heifer joining prospect from a first calving 2yo heifer. He is from maternal distinction. Dream R41 is a 3/4 sister to the dam of an Australian Record priced yearling bull. Dream J79 is a legend here at GBA. Blockbuster V226 ranks in the Top 50% of the Angus breed for 15 individual traits. Positive Fat.

DOCILITY ST★R RATING



Scrotal Circumference: 41cm

KPI
176

Age: 22.5 months

Purchaser..... \$.....

20% 50%



Lot 45 BLACK ANGUS LUMBERJACK V372[#]

Ident: SJQ24V372

Born: 11/05/2024

Genetic Status: AMFU,CAFU,DDFU,NHFU

Mating Type: Natural

Registration Level: HBR

G A R PROPHET^{SV}

MOHNEN LONG HAUL 502^{SV}

BALDRIDGE BEAST MODE B074^{PV}

STONEY POINT LOOKER L46^{SV}

BALDRIDGE ISABEL Y69[#]

STONEY POINT ROMANTIC G42[#]

SIRE: WKGQ48 DIAMOND ONE BEAST MODE Q48^{SV}

DAM: SYAN323 STONEY POINT BLACKBIRD N323^{SV}

AYRVALE BARTEL E7^{PV}

DUNOON MIDLAND A017^{PV}

DIAMOND TREE BARTEL L60[#]

VERMONT BLACKBIRD E038[#]

DIAMOND TREE HOOVER DAM J88[#]

VERMONT BLACKBIRD C104[#]

TACE	Mid December 2025 TransTasman Angus Cattle Evaluation																		
	CEDir	CEDtrs	GL	BW	200	400	600	MCW	MBC	MCH	Milk	SS	CWT	EMA	Rib	P8	RBY	IMF	DOC
EBV	-0.2	+0.7	-3.5	+5.4	+66	+110	+142	+128	+0.23	+8.3	+20	+3.2	+80	+5.7	-3.1	-4.4	+0.9	+1.7	+8
Acc	60%	51%	71%	75%	74%	71%	75%	70%	49%	56%	65%	75%	63%	62%	63%	64%	56%	67%	67%
Perc	74	75	66	80	5	12	13	16	65	47	29	17	20	59	96	20	66	66	91

Traits Observed: BWT,200WT,600WT(x2),SC,Scan(EMA,Rib,Rump,IMF),DOC

High performance son of the WA bred Lumberjack Q48. V372 ranks in the Top 5% of the Angus breed for Early Growth. Top 11-20% for 400 Growth, 600 Growth, Scrotal Size, Carcase Weight, Retail Beef Yield and Feed Efficiency. Take him home and add in a new budget line for additional profit.

DOCILITY ST★R RATING



Scrotal Circumference: 42cm

KPI
149

Age: 21 months

Purchaser..... \$.....

Lot 46 BLACK ANGUS RANGELAND V326[#]

Ident: SJQ24V326

Born: 21/04/2024

Genetic Status: AMFU,CAFU,DDFU,NHFU

Mating Type: AI

Registration Level: HBR

BASIN RAINMAKER 2704[#]

MATAURI REALITY 839[#]

BASIN RAINMAKER 4404^{PV}

KAROO KNOCKOUT K176^{SV}

BASIN JOY 1036[#]

KAROO JEDDA H213[#]

SIRE: USA19590500 ELLINGSON RANGELAND^{PV}

DAM: SJQP97 BLACK ANGUS WILCOOLA P97[#]

CTS REMEDY 1T01[#]

COONAMBLE ELEVATOR E11^{PV}

EA EMBLYNETTE 7009[#]

BLACK ANGUS WILCOOLA L85[#]

EA EMBLYNETTE 5241[#]

BLACK ANGUS WILCOOLA H215[#]

TACE	Mid December 2025 TransTasman Angus Cattle Evaluation																		
	CEDir	CEDtrs	GL	BW	200	400	600	MCW	MBC	MCH	Milk	SS	CWT	EMA	Rib	P8	RBY	IMF	DOC
EBV	+1.5	+3.8	-3.9	+4.2	+47	+88	+107	+105	+0.31	+6.6	+15	+1.9	+58	+6.7	+0.3	-0.9	+1.1	+1.3	+28
Acc	59%	48%	83%	75%	72%	70%	75%	69%	40%	44%	63%	75%	63%	61%	62%	62%	56%	64%	65%
Perc	61	46	59	56	70	67	77	45	41	78	63	59	78	46	41	61	13	76	22

Traits Observed: GL,BWT,200WT,600WT(x2),SC,Scan(EMA,Rib,Rump,IMF),DOC

The Wilcoola cow family has served GBA well over the decades. Rangeland V326 has 3 of the best in his pedigree. P97, L85 and H215. V326 is a 4.5 Star Docility Rated fellow suitable for heifer joining.

DOCILITY ST★R RATING



Scrotal Circumference: 40cm

KPI
137

Age: 22 months

Purchaser..... \$.....

Lot 47 BLACK ANGUS RANGELAND V324[#]

Ident: SJQ24V324

Born: 20/04/2024

Genetic Status: AMFU,CAFU,DDFU,NHFU

Mating Type: AI

Registration Level: HBR

BASIN RAINMAKER 2704[#]

MATAURI REALITY 839[#]

BASIN RAINMAKER 4404^{PV}

CLUNIE RANGE LEGEND L348^{PV}

BASIN JOY 1036[#]

ABERDEEN ESTATE LAURA J81^{PV}

SIRE: USA19590500 ELLINGSON RANGELAND^{PV}

DAM: THCP65 CLUDEN NEWRY P65[#]

CTS REMEDY 1T01[#]

ARDROSSAN ADMIRAL A2^{PV}

EA EMBLYNETTE 7009[#]

CLUDEN NEWRY EGYPT D134[#]

EA EMBLYNETTE 5241[#]

CLUDEN NEWRY EGYPT W005[#]

TACE	Mid December 2025 TransTasman Angus Cattle Evaluation																		
	CEDir	CEDtrs	GL	BW	200	400	600	MCW	MBC	MCH	Milk	SS	CWT	EMA	Rib	P8	RBY	IMF	DOC
EBV	-0.3	+0.4	-6.8	+6.6	+56	+95	+117	+127	+0.29	+6.8	+11	+1.7	+69	+4.9	-1.8	-5.8	+1.2	+1.6	+32
Acc	60%	50%	83%	75%	72%	71%	75%	70%	48%	55%	63%	75%	63%	62%	63%	63%	57%	65%	66%
Perc	74	77	17	93	30	44	57	17	47	75	89	66	48	68	85	99	10	69	13

Traits Observed: GL,BWT,200WT,600WT(x2),SC,Scan(EMA,Rib,Rump,IMF),DOC

*****5 Star Docility Rating. A full brother to Rangeland V324 sold to Nicolai Farms in 2025 for \$18,000. The Nicolai Farms first run of 2025 drop weaner steers sold at the top of the recent Naracoorte Xmas Calf Sale. V324 ranks in the Top 10% of the Angus breed for Retail Beef Yield. Top 13% for Docility. Top 50% for 10 individual traits.

DOCILITY ST★R RATING



Scrotal Circumference: 38.5cm

KPI
131

Age: 22 months

Purchaser..... \$.....

20% 50%



Lot 48 BLACK ANGUS ALBO V407^{SV} Ident: SJQ24V407

Born: 20/06/2024 **Genetic Status:** AMFU,CAFU,DDFU,NHFU **Mating Type:** Natural **Registration Level:** HBR
 RENNYLEA L508^{PV}
 DUNOON PRIME MINISTER P758^{SV}
 DUNOON JAPARA M1008[#]
SIRE: SDF21S74 BULL OAK WELL PRIME MINISTER S74^{PV} **DAM:** SJQP291 BLACK ANGUS ADELAIDE P291[#]
 SYDGEN TRUST 6228[#]
 BULL OAK WELL MELODY K7^{SV}
 BULL OAK WELL MELODY H50^{SV}
 GILMANDYKE JERRAWANGALA J0340^{SV}
 BLACK ANGUS ADELAIDE M287[#]
 BLACK ANGUS ADELAIDE H27[#]

TACE	Mid December 2025 TransTasman Angus Cattle Evaluation																		
	CEDir	CEDtrs	GL	BW	200	400	600	MCW	MBC	MCH	Milk	SS	CWT	EMA	Rib	P8	RBY	IMF	DOC
EBV	+3.7	+1.1	-6.8	+3.4	+53	+93	+117	+103	+0.30	+7.6	+19	+3.6	+63	+2.3	-0.3	-0.1	+0.1	+2.6	+27
Acc	53%	46%	63%	72%	68%	66%	70%	64%	42%	46%	59%	69%	57%	55%	58%	58%	51%	60%	60%
Perc	42	72	17	38	43	52	58	49	44	62	32	11	67	90	56	47	65	44	26

Traits Observed: BWT,200WT,600WT(x2),SC,Scan(EMA,Rib,Rump,IMF),DOC

DOCILITY ST★R RATING



Scrotal Circumference: 42cm

KPI
160

Age: 20 months

Late June drop - suitable for heifer joining. Albo V407 ranks in the Top 11-27% of the Angus breed for Gestation Length, Days to Calving, Scrotal Size, Docility and Feed Efficiency. 4.5 Star Docility Rating.

Purchaser..... \$.....

Lot 49 BLACK ANGUS ACCELERATE V404[#] Ident: SJQ24V404

Born: 10/06/2024 **Genetic Status:** AMFU,CAFU,DDFU,NHFU **Mating Type:** Natural **Registration Level:** HBR
 KOUPAL ADVANCE 28[#]
 ELLINGSON ACCELERATE 5264^{PV}
 EA EMBLYNETTE 3361[#]
SIRE: WKG21S28 GANDY ACCELERATE S28^{SV} **DAM:** SJQ22T14 BLACK ANGUS EXPO T14[#]
 MAR INNOVATION 251^{PV}
 DIAMOND ONE INNOVATION P34[#]
 DIAMOND TREE RESERVE L147[#]
 MATAURI REALITY 839[#]
 GLENOCH-JK MAKAHU M602^{SV}
 GLENOCH-JK ANN K615^{SV}
 BRONMAR BAR MARTEL M1^{SV}
 BLACK ANGUS EXPO R151[#]
 BLACK ANGUS EXPO P307[#]

TACE	Mid December 2025 TransTasman Angus Cattle Evaluation																		
	CEDir	CEDtrs	GL	BW	200	400	600	MCW	MBC	MCH	Milk	SS	CWT	EMA	Rib	P8	RBY	IMF	DOC
EBV	+3.4	+5.1	-5.6	+5.4	+59	+103	+136	+129	+0.24	+8.3	+19	+3.8	+77	+5.2	-0.6	-1.8	+0.9	+0.6	+27
Acc	53%	44%	67%	69%	67%	64%	67%	63%	39%	43%	57%	65%	56%	55%	57%	57%	50%	60%	59%
Perc	44	32	32	80	18	24	20	15	62	47	38	8	26	65	63	75	20	89	25

Traits Observed: CE,BWT,200WT,400WT,600WT,SC,Scan(EMA,Rib,Rump,IMF)

DOCILITY ST★R RATING



Scrotal Circumference: 43.5cm

KPI
192

Age: 20 months

*****5 Star Docility Rating. Accelerate V404 scored straight 5's on all Docility recordings. V404 ranks in the Top 50% of the Angus breed for 16 individual traits. An elite heifer joining prospect. 43.5cm Scrotal.

Purchaser..... \$.....

Lot 50 BLACK ANGUS RANGELAND V308[#] Ident: SJQ24V308

Born: 18/04/2024 **Genetic Status:** AMFU,CAFU,DDFU,NHFU **Mating Type:** AI **Registration Level:** HBR
 BASIN RAINMAKER 2704[#]
 BASIN RAINMAKER 4404^{PV}
 BASIN JOY 1036[#]
SIRE: USA19590500 ELLINGSON RANGELAND^{PV} **DAM:** THCP208 CLUDEN NEWRY P208^{SV}
 CTS REMEDY 1T01[#]
 EA EMBLYNETTE 7009[#]
 EA EMBLYNETTE 5241[#]
 CARABAR DOCKLANDS D62^{PV}
 CLUDEN NEWRY DOCKLANDS M36^{SV}
 CLUDEN NEWRY EGYPT H91[#]
 SYDGEN BLACK PEARL 2006^{PV}
 CLUDEN NEWRY ARAWATEA M24[#]
 CLUDEN NEWRY ARAWZTEA K89[#]

TACE	Mid December 2025 TransTasman Angus Cattle Evaluation																		
	CEDir	CEDtrs	GL	BW	200	400	600	MCW	MBC	MCH	Milk	SS	CWT	EMA	Rib	P8	RBY	IMF	DOC
EBV	+3.7	+5.1	-7.4	+4.5	+53	+86	+110	+97	+0.14	+7.7	+15	+1.1	+66	+4.2	-0.7	-3.7	+1.0	+1.0	+13
Acc	62%	52%	84%	76%	75%	73%	76%	72%	47%	54%	67%	76%	65%	65%	65%	65%	58%	69%	70%
Perc	42	32	12	63	42	72	73	58	86	59	65	84	58	76	65	93	16	82	80

Traits Observed: GL,BWT,200WT,600WT(x2),SC,Scan(EMA,Rib,Rump,IMF),DOC

DOCILITY ST★R RATING



Scrotal Circumference: 37cm

KPI
92

Age: 22 months

Another impressive Rangeland son suitable for heifer joining. Rangeland V308 ranks in the Top 11% of the Angus breed for Feed Efficiency. Top 12% for Gestation Length. Top 16% for Retail Beef Yield. Calving Ease Direct at Plus 3.7

Purchaser..... \$.....

20% 50%



Lot 51 BLACK ANGUS JONAH LOMU V336^{SV} Ident: SJQ24V336

Born: 22/04/2024 **Genetic Status:** AMFU,CAFU,DDFU,NHFU,RGF **Mating Type:** Natural **Registration Level:** HBR
MATAURI REALITY 839[#] COONAMBLE Z3^{PV}
MILWILLAH REALITY K12^{PV} COONAMBLE ELEVATOR E11^{PV}
MILWILLAH BARUNAH H8^{SV} BANGADANG B31^{SV}
SIRE: NENM367 KAROO MAIN EVENT M367^{SV} **DAM: SJQL85 BLACK ANGUS WILCOOLA L85[#]**
ARDROSSAN EQUATOR A241^{PV} BLACK ANGUS BODYBUILDER E45^{SV}
KAROO DORIS G34[#] BLACK ANGUS WILCOOLA H215[#]
KAROO DORIS Y137^{SV} ROSSANDER WILCOOLA X56^{PV}

TACE	Mid December 2025 TransTasman Angus Cattle Evaluation																		
	CEDir	CEDtrs	GL	BW	200	400	600	MCW	MBC	MCH	Milk	SS	CWT	EMA	Rib	P8	RBY	IMF	DOC
EBV	-3.7	-3.1	+0.0	+4.1	+46	+100	+128	+93	+0.40	+7.6	+21	+2.9	+67	+8.7	+0.3	+2.0	+0.2	+3.2	+43
Acc	68%	59%	84%	83%	84%	82%	83%	80%	65%	74%	78%	80%	72%	71%	71%	72%	64%	75%	78%
Perc	89	93	97	54	77	31	34	65	19	60	24	24	54	25	41	16	59	31	2

Traits Observed: BWT,200WT,600WT(x2),SC,Scan(EMA,Rib,Rump,IMF),DOC,Genomics

DOCILITY ST★R RATING



Scrotal Circumference: 40cm

KPI
191

Age: 22 months

*****5 Star Docility Rating. Blockbuster V336 is backed by three of our top Wilcoola females - L85, H215 and X56. He ranks in the Top 2% of the Angus breed for Docility. Top 50% for 15 individual traits. Positive Fat. EMA at 8.7

Purchaser..... \$.....

Lot 52 BLACK ANGUS YANKEE V409[#] Ident: SJQ24V409

Born: 24/06/2024 **Genetic Status:** AMFU,CAFU,DDFU,NHFU **Mating Type:** Natural **Registration Level:** APR
SITZ UPWARD 307R^{SV} MILWILLAH ELEVATOR H76^{PV}
STONEY POINT LOVIS L178^{SV} PINORA LEVI L73[#]
COORONG SKYE H233^{SV} PINORA LILA G68[#]
SIRE: MAN21S301 MANDAYEN BLACK ANGUS S301^{PV} **DAM: SJQQ106 BLACK ANGUS ENTERPRISE Q106[#]**
MATAURI REALITY 839[#] VERMONT NEUTRON X306^{PV}
STONEY POINT YANKEE QUEEN M173^{PV} BLACK ANGUS ENTERPRISE G127[#]
STONEY POINT YANKEE QUEEN K197^{PV} BLACK ANGUS ENTERPRISE C111[#]

TACE	Mid December 2025 TransTasman Angus Cattle Evaluation																		
	CEDir	CEDtrs	GL	BW	200	400	600	MCW	MBC	MCH	Milk	SS	CWT	EMA	Rib	P8	RBY	IMF	DOC
EBV	-6.8	+1.9	-2.3	+7.0	+57	+105	+136	+144	+0.48	+10.3	+14	+3.9	+73	+5.2	-1.2	-1.4	+1.1	+0.5	+15
Acc	54%	45%	62%	74%	69%	67%	71%	65%	39%	45%	59%	70%	58%	55%	57%	57%	50%	58%	60%
Perc	96	65	82	96	25	19	19	6	8	14	73	7	37	65	75	69	13	90	70

Traits Observed: BWT,200WT,600WT(x2),SC,Scan(EMA,Rib,Rump,IMF),DOC

DOCILITY ST★R RATING



Scrotal Circumference: 42cm

KPI
147

Age: 20 months

Late June drop - one of the youngest in the sale. Yankee V409's sire was our first calf from the \$46,000 Stoney Point Yankee Queen M173. Yankee V409 ranks in the Top 7% of the Angus breed for Scrotal Size. Top 8% for Mature Body Condition. Top 13% for Retail Beef Yield. Top 19% for 400 Growth and 600 Growth.

Purchaser..... \$.....

Lot 53 BLACK ANGUS TOM STEWART V114[#] Ident: SJQ24V114

Born: 06/07/2024 **Genetic Status:** AMFU,CAFU,DDFU,NHFU **Mating Type:** Natural **Registration Level:** APR
V A R DISCOVERY 2240^{PV} STORTH OAKS JACK J7^{SV}
LANDFALL NEW GROUND N90^{PV} BLACK ANGUS KIWI JACK Q54^{SV}
LANDFALL ELSA L88^{PV} BLACK ANGUS EMPRESS K29[#]
SIRE: SJQ22T407 BLACK ANGUS TOM STEWART T407^{PV} **DAM: SJQ22T215 BLACK ANGUS AMANDA T215[#]**
STONEY POINT POWER P114^{SV} BLACK ANGUS NEWSLINE B37^{SV}
STONEY POINT YANKEE QUEEN R546^{PV} BLACK ANGUS AMANDA F11[#]
STONEY POINT YANKEE QUEEN P263^{SV} BLACK ANGUS AMANDA C105[#]

TACE	Mid December 2025 TransTasman Angus Cattle Evaluation																		
	CEDir	CEDtrs	GL	BW	200	400	600	MCW	MBC	MCH	Milk	SS	CWT	EMA	Rib	P8	RBY	IMF	DOC
EBV	+0.6	+1.1	-4.6	+4.0	+49	+92	+107	+90	+0.40	+8.3	+11	+2.4	+56	+11.3	-0.8	-1.3	+1.4	+1.1	+40
Acc	53%	46%	63%	67%	67%	64%	66%	65%	46%	45%	57%	60%	56%	55%	57%	57%	51%	59%	59%
Perc	68	72	48	51	61	56	78	69	19	47	88	40	81	8	67	67	6	80	3

Traits Observed: BWT,200WT,600WT,DOC

DOCILITY ST★R RATING



Scrotal Circumference: 40cm

KPI
161

Age: 19.5 months

Youngest bull in the sale - July drop. From a first calving 2yo heifer. Tom Stewart V114 is ranked in the Top 3% of the Angus breed for Docility. Top 6% for Retail Beef Yield. Top 8% for EMA. Top 19% for Mature Body Condition. 4.5 Star Docility Rating.

Purchaser..... \$.....

20% 50%



Lot 54 BLACK ANGUS WATTLE STREET V318# Ident: SJQ24V318

Born: 19/04/2024 **Genetic Status:** AMFU,CAFU,DDFU,NHFU **Mating Type:** AI **Registration Level:** HBR
 EF COMPLEMENT 8088^{PV} TE MANIA EMPEROR E343^{PV}
 BLACK ANGUS COMPLEMENT L51^{SV} STORTH OAKS JACK J7^{SV}
 BLACK ANGUS EXPO J119# STORTH OAKS G183#
SIRE: SJQQ127 BLACK ANGUS WATTLE STREET Q127^{SV} **DAM: SJQP163 BLACK ANGUS PANDORA P163#**
 WITHERSWOOD PERFORMER E49^{PV} ARDROSSAN ADMIRAL C57^{SV}
 BLACK ANGUS MST K53# BLACK ANGUS PANDORA L135#
 BLACK ANGUS CLEOPATRA D25# BLACK ANGUS PANDORA F87#

TACE	Mid December 2025 TransTasman Angus Cattle Evaluation																		
	CEDir	CEDtrs	GL	BW	200	400	600	MCW	MBC	MCH	Milk	SS	CWT	EMA	Rib	P8	RBY	IMF	DOC
EBV	-6.0	-0.5	-3.7	+6.6	+58	+103	+137	+124	+0.29	+9.7	+16	+3.0	+81	+8.8	-0.9	-1.5	+0.7	+0.9	+33
Acc	56%	47%	83%	74%	69%	67%	72%	66%	47%	45%	61%	63%	60%	59%	61%	61%	55%	63%	63%
Perc	95	83	62	93	22	23	18	19	47	23	60	22	19	24	69	70	30	84	11

Traits Observed: GL,BWT,200WT(x2),600WT,DOC

DOCILITY ST★R RATING



Scrotal Circumference: 39cm

KPI
181

Age: 22 months

Last of the powerful Wattle Street sons in this sale. V318 ranks in the Top 11% of the Angus breed for Docility. Top 19-24% for 200 Growth, 400 Growth, 600 Growth, Scrotal Size, Carcase Weight and EMA.

Purchaser..... \$.....

Lot 55 BLACK ANGUS RANGELAND V262# Ident: SJQ24V262

Born: 07/04/2024 **Genetic Status:** AMFU,CAFU,DDFU,NHFU **Mating Type:** AI **Registration Level:** HBR
 BASIN RAINMAKER 2704# KM BROKEN BOW 002^{PV}
 BASIN RAINMAKER 4404^{PV} VARILEK GEDDES 7068^{PV}
 BASIN JOY 1036# VARILEK GOLDIE 5051 506#
SIRE: USA19590500 ELLINGSON RANGELAND^{PV} **DAM: SJQ22T31 BLACK ANGUS EMBLYNETTE T31#**
 CTS REMEDY 1T01# KO 9108 KRONE K122^{SV}
 EA EMBLYNETTE 7009# STONEY POINT EMBLYNETTE Q015#
 EA EMBLYNETTE 5241# ANVIL EMBLYNETTE M089#

TACE	Mid December 2025 TransTasman Angus Cattle Evaluation																		
	CEDir	CEDtrs	GL	BW	200	400	600	MCW	MBC	MCH	Milk	SS	CWT	EMA	Rib	P8	RBY	IMF	DOC
EBV	+4.5	+4.1	-3.7	+3.5	+53	+94	+118	+95	+0.16	+6.0	+20	+1.7	+72	+6.8	-0.2	-1.2	+1.0	+0.8	+19
Acc	58%	47%	83%	74%	70%	68%	72%	67%	39%	42%	61%	65%	60%	60%	61%	60%	55%	63%	64%
Perc	34	43	62	40	43	49	56	62	82	86	30	66	39	45	53	66	16	86	56

Traits Observed: GL,BWT,200WT(x2),600WT,DOC

DOCILITY ST★R RATING



Scrotal Circumference: 39cm

KPI
151

Age: 22.5 months

From a first calving 2yo heifer. Rangeland V262 is suitable for heifer joining. He ranks in the Top 16% of the Angus breed for Retail Beef Yield. Positive Calving Ease Direct. Related to Lot 27 in this sale. 4.5 Star Docility Rating.

Purchaser..... \$.....

Lot 56 BLACK ANGUS TOM STEWART V34# Ident: SJQ24V34

Born: 24/04/2024 **Genetic Status:** AMFU,CAFU,DDFU,NHFU **Mating Type:** Natural **Registration Level:** APR
 V A R DISCOVERY 2240^{PV} KM BROKEN BOW 002^{PV}
 LANDFALL NEW GROUND N90^{PV} VARILEK GEDDES 7068^{PV}
 LANDFALL ELSA L88^{PV} VARILEK GOLDIE 5051 506#
SIRE: SJQ22T407 BLACK ANGUS TOM STEWART T407^{PV} **DAM: SJQ22T105 BLACK ANGUS TRIPLE SCOTCH T105#**
 STONEY POINT POWER P114^{SV} GALWAY EQUATION E16^{SV}
 STONEY POINT YANKEE QUEEN R546^{PV} BLACK ANGUS SCOTCH J271#
 STONEY POINT YANKEE QUEEN P263^{SV} BLACK ANGUS SCOTCH F145#

TACE	Mid December 2025 TransTasman Angus Cattle Evaluation																		
	CEDir	CEDtrs	GL	BW	200	400	600	MCW	MBC	MCH	Milk	SS	CWT	EMA	Rib	P8	RBY	IMF	DOC
EBV	-1.6	-2.2	-5.6	+5.6	+58	+102	+133	+111	+0.37	+8.3	+16	+2.9	+75	+10.8	-1.1	-1.0	+1.3	+0.2	+25
Acc	55%	48%	64%	71%	67%	65%	69%	65%	47%	46%	59%	62%	57%	56%	58%	58%	51%	60%	61%
Perc	81	90	32	83	22	25	25	36	25	47	59	24	31	11	73	63	8	93	32

Traits Observed: CE,BWT,200WT,600WT

DOCILITY ST★R RATING



Scrotal Circumference: 34cm

KPI
178

Age: 22 months

High Growth and High Yielding son of Tom Stewart. From a first calving 2yo heifer. Tom Stewart V34 ranks in the Top 8% of the Angus breed for Retail Beef Yield. Top 11% for EMA. Top 22-25% for 200 Growth, 400 Growth and 600 Growth. Related to Lot 39 in this sale. 4.5 Star Docility Rating.

Purchaser..... \$.....

20% 50%

**Lot 57 BLACK ANGUS ROCKSTAR V83^{SV}****Ident: SJQ24V83****Born:** 30/05/2024**Genetic Status:** AMFU,CAFU,DDF,NHFU**Mating Type:** Natural**Registration Level:** HBRG A R PROPHET^{SV}BALDRIDGE BEAST MODE B074^{PV}BALDRIDGE ISABEL Y69[#]MILLAH MURRAH KLOONEY K42^{PV}MANDAYEN CLOONEY P555^{SV}FORRES ROYAL-LINE B28^{PV}**SIRE: SJQR70 BLACK ANGUS BEAST MODE R70^{SV}****DAM: SJQ21S118 BLACK ANGUS EMPRESS S118[#]**BLACK ANGUS BRAMBUIE F197^{SV}BLACK ANGUS COMPLEMENT L51^{SV}BLACK ANGUS EMPRESS J257[#]BLACK ANGUS EMPRESS N333[#]BLACK ANGUS EMPRESS F171[#]BLACK ANGUS EMPRESS K223[#]

TACE	Mid December 2025 TransTasman Angus Cattle Evaluation																		
	CEDir	CEDtrs	GL	BW	200	400	600	MCW	MBC	MCH	Milk	SS	CWT	EMA	Rib	P8	RBY	IMF	DOC
EBV	+6.9	+4.9	-0.8	+2.8	+57	+95	+112	+113	+0.24	+8.8	+12	+3.6	+60	+6.6	-1.3	-3.4	+1.1	+0.8	+31
Acc	62%	53%	81%	81%	82%	80%	81%	78%	65%	74%	72%	77%	68%	68%	68%	69%	59%	72%	75%
Perc	14	34	94	26	28	44	68	33	62	38	84	11	74	47	77	91	13	86	14

Traits Observed: BWT,200WT,400WT,DOC,Genomics

Rockstar V83 is one of the lowest Birth Weight bulls in this sale. Sons of Beast Mode R70 are rock solid on Feet and Docility. This fellow ranks in the Top 3% of the Angus breed for Foot Angle. Top 11-14% for Calving Ease Direct, Scrotal Size, Docility and Retail Beef Yield. Top 50% for 14 individual traits. 4.5 Star Docility Rating.

DOCILITY ST★R RATING**Scrotal Circumference:** 40cm**KPI**
190**Age:** 20.5 months**Purchaser**..... \$.....**Lot 58 BLACK ANGUS ACCELERATE V390[#]****Ident: SJQ24V390****Born:** 23/05/2024**Genetic Status:** AMFU,CAFU,DDFU,NHFU**Mating Type:** Natural**Registration Level:** APRKOU PAL ADVANCE 28[#]ELLINGSON ACCELERATE 5264^{PV}EA EMBLYNETTE 3361[#]CONNEALY CAPITALIST 028[#]LD CAPITALIST 316^{PV}LD DIXIE ERICA 2053[#]**SIRE: WKG21S28 GANDY ACCELERATE S28^{SV}****DAM: SJQP53 BLACK ANGUS ENTERPRISE P53[#]**MAR INNOVATION 251^{PV}BLACK ANGUS EQUATOR A241 H11^{SV}DIAMOND ONE INNOVATION P34[#]BLACK ANGUS ENTERPRISE L125[#]DIAMOND TREE RESERVE L147[#]BLACK ANGUS KELPIE G27[#]

TACE	Mid December 2025 TransTasman Angus Cattle Evaluation																		
	CEDir	CEDtrs	GL	BW	200	400	600	MCW	MBC	MCH	Milk	SS	CWT	EMA	Rib	P8	RBY	IMF	DOC
EBV	+4.0	+6.8	-5.3	+3.9	+51	+87	+110	+103	+0.18	+7.2	+17	+2.5	+68	+2.1	-1.3	-1.5	+0.3	+1.3	+17
Acc	56%	47%	68%	73%	69%	67%	73%	66%	40%	43%	59%	72%	59%	56%	58%	58%	52%	60%	60%
Perc	39	15	36	49	53	70	73	49	78	69	53	37	50	91	77	70	53	76	63

Traits Observed: BWT,200WT,600WT(x2),SC,Scan(EMA,Rib,Rump,IMF),DOC

Only one Accelerate son after this fellow. V390 is suitable for heifer joining. 23 calves from his dam, grand dam and great grand dam to date. He is typical of the Accelerate type - high growth, long bodied and correct structure. He ranks in the Top 15% of the Angus breed for Calving Ease Daughters. 4.5 Star Docility Rating.

DOCILITY ST★R RATING**Scrotal Circumference:** 41cm**KPI**
111**Age:** 21 months**Purchaser**..... \$.....**Lot 59 BLACK ANGUS RANGELAND V259[#]****Ident: SJQ24V259****Born:** 06/04/2024**Genetic Status:** AMFU,CAFU,DDFU,NHFU**Mating Type:** AI**Registration Level:** HBRBASIN RAINMAKER 2704[#]BASIN RAINMAKER 4404^{PV}BASIN JOY 1036[#]MILWILLAH ELEVATOR H76^{PV}PINORA LEVI L73[#]PINORA LILA G68[#]**SIRE: USA19590500 ELLINGSON RANGELAND^{PV}****DAM: SJQQ172 BLACK ANGUS WHISTLING BIRD Q172[#]**CTS REMEDY 1T01[#]BLACK ANGUS NEWSLINE B37^{SV}EA EMBLYNETTE 7009[#]BLACK ANGUS WHISTLING BIRD E41[#]EA EMBLYNETTE 5241[#]BLACK ANGUS WHISTLING BIRD A3[#]

TACE	Mid December 2025 TransTasman Angus Cattle Evaluation																		
	CEDir	CEDtrs	GL	BW	200	400	600	MCW	MBC	MCH	Milk	SS	CWT	EMA	Rib	P8	RBY	IMF	DOC
EBV	-3.4	+2.0	-3.2	+6.4	+56	+94	+117	+113	+0.28	+7.9	+14	+1.9	+70	+6.8	-1.5	-3.4	+1.6	+0.4	+21
Acc	56%	44%	68%	73%	70%	69%	73%	67%	39%	43%	61%	72%	60%	58%	60%	59%	54%	60%	64%
Perc	88	64	70	92	31	49	58	33	50	54	74	59	47	45	80	91	4	91	46

Traits Observed: BWT,200WT,600WT(x2),SC,Scan(EMA,Rib,Rump,IMF),DOC

Twin to Lot 24. Second last Rangeland son in this sale. Rangeland V259 ranks in the Top 4% of the Angus breed for Retail Beef Yield. 4.5 Star Docility Rating.

DOCILITY ST★R RATING**Scrotal Circumference:** 40.5cm**KPI**
117**Age:** 22.5 months**Purchaser**..... \$.....

20% 50%



Lot 60 BLACK ANGUS ACCELERATE V395[#]

Ident: SJQ24V395

Born: 27/05/2024

Genetic Status: AMFU,CAFU,DDFU,NHFU

Mating Type: Natural

Registration Level: APR

KOUPAL ADVANCE 28[#]
ELLINGSON ACCELERATE 5264^{PV}
EA EMBLYNETTE 3361[#]

ARDROSSAN ADMIRAL A2^{PV}
ARDROSSAN ADMIRAL C57^{SV}
ARDROSSAN PRINCESS W38^{PV}

SIRE: WKG21S28 GANDY ACCELERATE S28^{SV}

DAM: SJQM207 BLACK ANGUS JENNIFER M207[#]

MAR INNOVATION 251^{PV}
DIAMOND ONE INNOVATION P34[#]
DIAMOND TREE RESERVE L147[#]

GALWAY EQUATION E16^{SV}
BLACK ANGUS JENNIFER H237[#]
BLACK ANGUS JENNIFER E141[#]

TACE	Mid December 2025 TransTasman Angus Cattle Evaluation																		
	CEDir	CEDtrs	GL	BW	200	400	600	MCW	MBC	MCH	Milk	SS	CWT	EMA	Rib	P8	RBY	IMF	DOC
EBV	+3.3	+3.2	-5.2	+2.8	+44	+80	+95	+81	+0.16	+8.6	+17	+2.3	+58	+4.1	-0.1	+0.0	+0.7	+0.9	+16
Acc	52%	43%	63%	73%	69%	67%	72%	65%	36%	40%	58%	72%	58%	53%	56%	55%	49%	58%	60%
Perc	45	52	38	26	83	85	92	81	82	41	53	44	79	77	51	45	30	84	68

Traits Observed: BWT,200WT,600WT(x2),SC,Scan(EMA,Rib,Rump,IMF),DOC

DOCILITY ST★R RATING



Scrotal Circumference: 39.5cm

KPI
102

Age: 20.5 months

Late May drop. Ideal heifer joining option. One of the Lowest Birth Weight sires in the sale. The last Accelerate son in this sale. 25 natural calves from his dam, grand dam and great grand dam. 4.5 Star Docility Rating.

Purchaser..... \$.....

Lot 61 BLACK ANGUS LUMBERJACK V392[#]

Ident: SJQ24V392

Born: 24/05/2024

Genetic Status: AMFU,CAFU,DDF,NHFU

Mating Type: Natural

Registration Level: HBR

G A R PROPHET^{SV}
BALDRIDGE BEAST MODE B074^{PV}
BALDRIDGE ISABEL Y69[#]

ARDROSSAN EQUATOR A241^{PV}
BLACK ANGUS EQUATOR A241 H11^{SV}
BLACK ANGUS X56 WILCOOLA D101^{SV}

SIRE: WKGQ48 DIAMOND ONE BEAST MODE Q48^{SV}

DAM: SJQN53 BLACK ANGUS IRIS N53[#]

AYRVALE BARTEL E7^{PV}
DIAMOND TREE BARTEL L60[#]
DIAMOND TREE HOOVER DAM J88[#]

LCC NEW STANDARD^{SV}
BLACK ANGUS NS IRIS K57[#]
BLACK ANGUS IRIS H159[#]

TACE	Mid December 2025 TransTasman Angus Cattle Evaluation																		
	CEDir	CEDtrs	GL	BW	200	400	600	MCW	MBC	MCH	Milk	SS	CWT	EMA	Rib	P8	RBY	IMF	DOC
EBV	-3.9	+3.0	-2.6	+4.3	+60	+95	+118	+95	+0.24	+7.7	+18	+2.0	+70	+5.8	-2.0	-2.3	+0.5	+3.3	+23
Acc	57%	49%	67%	74%	70%	69%	74%	67%	43%	46%	60%	73%	60%	58%	60%	60%	54%	62%	62%
Perc	90	55	78	58	15	45	55	62	62	59	42	55	46	58	87	81	41	29	40

Traits Observed: BWT,200WT,600WT(x2),SC,Scan(EMA,Rib,Rump,IMF),DOC

DOCILITY ST★R RATING



Scrotal Circumference: 38.5cm

KPI
123

Age: 20.5 months

Late May drop son of Beast Mode Q48. His dam, grand dam and great grand dam have produced 19 natural calves to date. Lumberjack V392 ranks in the Top 15% of the Angus breed for 200 Growth. Top 30% for IMF and ABL. 4.5 Star Docility Rating.

Purchaser..... \$.....

Lot 62 BLACK ANGUS ROCKSTAR V50[#]

Ident: SJQ24V50

Born: 13/05/2024

Genetic Status: AMFU,CAFU,DDFU,NHFU

Mating Type: Natural

Registration Level: HBR

G A R PROPHET^{SV}
BALDRIDGE BEAST MODE B074^{PV}
BALDRIDGE ISABEL Y69[#]

KM BROKEN BOW 002^{PV}
VARILEK GEDDES 7068^{PV}
VARILEK GOLDIE 5051 506[#]

SIRE: SJQR70 BLACK ANGUS BEAST MODE R70^{SV}

DAM: SJQ21S15 BLACK ANGUS CLEO S15[#]

BLACK ANGUS BRAMBUIE F197^{SV}
BLACK ANGUS EMPRESS J257[#]
BLACK ANGUS EMPRESS F171[#]

WITHERSWOOD PERFORMER E49^{PV}
BLACK ANGUS CLEO K65[#]
BLACK ANGUS CLEO H147[#]

TACE	Mid December 2025 TransTasman Angus Cattle Evaluation																		
	CEDir	CEDtrs	GL	BW	200	400	600	MCW	MBC	MCH	Milk	SS	CWT	EMA	Rib	P8	RBY	IMF	DOC
EBV	+1.4	-1.0	-4.6	+4.6	+59	+101	+126	+103	+0.21	+6.1	+15	+2.8	+74	+6.9	-0.4	-0.8	+0.5	+1.2	+26
Acc	56%	48%	67%	72%	68%	67%	67%	66%	46%	45%	59%	63%	58%	58%	60%	60%	54%	61%	61%
Perc	62	85	48	65	19	27	37	48	71	84	66	27	34	44	58	59	41	78	27

Traits Observed: BWT,200WT,400WT,DOC

DOCILITY ST★R RATING



Scrotal Circumference: 38cm

KPI
180

Age: 21 months

Mid May drop. Rockstar V50 hails from the highly regarded Cleo cow family. He also ranks in the Top 14-37% of the Angus breed for 200 Growth, 400 Growth, 600 Growth, Scrotal Size, Docility, Carcase Weight and Feed Efficiency.

Purchaser..... \$.....

20% 50%



Lot 63 BLACK ANGUS TOM STEWART V93[#]

Ident: SJQ24V93

Born: 02/06/2024

Genetic Status: AMFU,CAFU,DDFU,NHFU

Mating Type: Natural

Registration Level: HBR

V A R DISCOVERY 2240^{PV}
LANDFALL NEW GROUND N90^{PV}
LANDFALL ELSA L88^{PV}

MILLAH MURRAH KLOONEY K42^{PV}
MANDAYEN CLOONEY P555^{SV}
FORRES ROYAL-LINE B28^{PV}

SIRE: SJQ22T407 BLACK ANGUS TOM STEWART T407^{PV}

DAM: SJQ21S123 BLACK ANGUS KAYE S123[#]

STONE POINT POWER P114^{SV}
STONE POINT YANKEE QUEEN R546^{PV}
STONE POINT YANKEE QUEEN P263^{SV}

BLACK ANGUS COMPLEMENT L51^{SV}
BLACK ANGUS KAYE Q131[#]
BLACK ANGUS KAYE N247[#]

TACE	Mid December 2025 TransTasman Angus Cattle Evaluation																		
	CEDir	CEDtrs	GL	BW	200	400	600	MCW	MBC	MCH	Milk	SS	CWT	EMA	Rib	P8	RBY	IMF	DOC
EBV	+1.9	+3.3	-6.2	+3.7	+52	+94	+116	+103	+0.45	+9.4	+16	+2.2	+67	+9.6	+0.5	-0.1	+1.3	+0.6	+31
Acc	53%	46%	64%	71%	67%	66%	65%	65%	46%	46%	57%	61%	56%	56%	57%	58%	50%	60%	59%
Perc	58	51	24	44	48	48	60	49	11	28	60	48	53	18	37	47	8	89	14

Traits Observed: BWT,200WT,400WT,DOC

*****5 Star Docility Rating. June drop suitable for heifer joining. Tom Stewart V93 ranks in the Top 50% of the Angus breed for 17 individual traits. Top 8% for Retail Beef Yield. Top 11% for Mature Body Condition. Top 14% for Docility. Top 18% for EMA.

DOCILITY ST★R RATING



Scrotal Circumference: 39.5cm

KPI
176

Age: 20.5 months

Purchaser..... \$.....

Lot 64 BLACK ANGUS RANGELAND V233[#]

Ident: SJQ24V233

Born: 02/04/2024

Genetic Status: AMFU,CAFU,DDFU,NHFU

Mating Type: AI

Registration Level: APR

BASIN RAINMAKER 2704[#]
BASIN RAINMAKER 4404^{PV}
BASIN JOY 1036[#]

MILLAH MURRAH KLOONEY K42^{PV}
MANDAYEN CLOONEY P555^{SV}
FORRES ROYAL-LINE B28^{PV}

SIRE: USA19590500 ELLINGSON RANGELAND^{PV}

DAM: SJQ22T170 BLACK ANGUS ENTERPRISE T170[#]

CTS REMEDY 1T01[#]
EA EMBLYNETTE 7009[#]
EA EMBLYNETTE 5241[#]

BLACK ANGUS BRAMBUIE F197^{SV}
BLACK ANGUS ENTERPRISE J203[#]
BLACK ANGUS ENTERPRISE G167[#]

TACE	Mid December 2025 TransTasman Angus Cattle Evaluation																		
	CEDir	CEDtrs	GL	BW	200	400	600	MCW	MBC	MCH	Milk	SS	CWT	EMA	Rib	P8	RBY	IMF	DOC
EBV	+3.1	+4.4	-4.4	+4.9	+54	+88	+109	+95	+0.20	+7.3	+16	+1.7	+67	+6.3	+1.0	-0.8	+1.1	+0.5	+28
Acc	56%	45%	82%	74%	69%	67%	72%	67%	38%	41%	61%	65%	59%	59%	61%	60%	54%	62%	63%
Perc	47	39	51	71	40	65	75	62	73	66	58	66	55	51	27	59	13	90	23

Traits Observed: GL,BWT,200WT(x2),600WT,DOC

V233 is from a first calving 2yo heifer and is an ideal heifer joining prospect. Last of the impressive Rangeland sons to sell in this sale. Positive Fat.

DOCILITY ST★R RATING



Scrotal Circumference: 35.5cm

KPI
143

Age: 22.5 months

Purchaser..... \$.....

Lot 65 BLACK ANGUS HARRY TAYLOR V18[#]

Ident: SJQ24V18

Born: 10/04/2024

Genetic Status: AMFU,CAFU,DDFU,NHFU

Mating Type: AI

Registration Level: HBR

KM BROKEN BOW 002^{PV}
VARILEK GEDDES 7068^{PV}
VARILEK GOLDIE 5051 506[#]

BLACK ANGUS COMPLEMENT L51^{SV}
BLACK ANGUS WATTLE STREET Q127^{SV}
BLACK ANGUS MST K53[#]

SIRE: SJQR605 BLACK ANGUS GEDDES R605^{PV}

DAM: SJQ22T202 BLACK ANGUS WAMALTA T202[#]

LAWSONS INCREDIBLE H803^{PV}
LAWSONS INCREDIBLE L882^E
LAWSONS REGENT J1425^{SV}

KENNY'S CREEK EQUATOR J222^{SV}
BLACK ANGUS WAMALTA M73[#]
BLACK ANGUS WAMALTA J267[#]

TACE	Mid December 2025 TransTasman Angus Cattle Evaluation																		
	CEDir	CEDtrs	GL	BW	200	400	600	MCW	MBC	MCH	Milk	SS	CWT	EMA	Rib	P8	RBY	IMF	DOC
EBV	-1.3	+0.2	-2.4	+4.7	+57	+101	+135	+118	+0.11	+8.5	+24	+2.2	+83	+3.0	-2.1	-1.3	+0.2	+1.6	+18
Acc	53%	44%	82%	72%	68%	65%	70%	66%	46%	44%	58%	62%	57%	57%	59%	59%	52%	61%	59%
Perc	80	79	80	67	28	27	22	26	90	44	9	48	14	86	89	67	59	69	62

Traits Observed: GL,CE,BWT,200WT(x2),600WT,DOC

Harry Taylor V18 is a high growth individual from a 2yo Wattle Street daughter. His sire topped our 2022 sale at \$38,000. He ranks in the Top 9% of the Angus breed for Milk. Top 14% Carcase Weight and Feed Efficiency. Top 22-28% for 200 Growth, 400 Growth and 600 Growth.

DOCILITY ST★R RATING



Scrotal Circumference: 36.5cm

KPI
132

Age: 22.5 months

Purchaser..... \$.....

20% 50%



Lot 66 BLACK ANGUS TOM STEWART V111# Ident: SJQ24V111

Born: 01/07/2024 **Genetic Status:** AMFU,CAFU,DDFU,NHFU **Mating Type:** Natural **Registration Level:** APR
 V A R DISCOVERY 2240^{PV} KM BROKEN BOW 002^{PV}
 LANDFALL NEW GROUND N90^{PV} VARILEK GEDDES 7068^{PV}
 LANDFALL ELSA L88^{PV} VARILEK GOLDIE 5051 506[#]

SIRE: SJQ22T407 BLACK ANGUS TOM STEWART T407^{PV} **DAM: SJQ22T104 BLACK ANGUS TRIPLE SCOTCH T104[#]**
 STONEY POINT POWER P114^{SV} GALWAY EQUATION E16^{SV}
 STONEY POINT YANKEE QUEEN R546^{PV} BLACK ANGUS SCOTCH J271[#]
 STONEY POINT YANKEE QUEEN P263^{SV} BLACK ANGUS SCOTCH F145[#]

TACE	Mid December 2025 TransTasman Angus Cattle Evaluation																		
	CEDir	CEDtrs	GL	BW	200	400	600	MCW	MBC	MCH	Milk	SS	CWT	EMA	Rib	P8	RBY	IMF	DOC
EBV	-1.3	-2.0	-5.7	+4.7	+52	+92	+115	+92	+0.34	+8.2	+15	+2.6	+64	+10.5	-0.6	-0.3	+1.2	+0.3	+25
Acc	55%	48%	64%	67%	68%	65%	67%	66%	47%	46%	59%	62%	57%	56%	58%	58%	51%	60%	61%
Perc	80	89	31	67	49	54	61	66	33	49	65	33	61	12	63	50	10	92	32

Traits Observed: BWT,200WT,600WT

DOCILITY ST★R RATING



Scrotal Circumference: 36.5cm

KPI
148

Age: 19.5 months

Purchaser..... \$.....

Lot 67 BLACK ANGUS TOM STEWART V107# Ident: SJQ24V107

Born: 26/06/2024 **Genetic Status:** AMFU,CA1%,DDFU,NHFU **Mating Type:** Natural **Registration Level:** APR
 V A R DISCOVERY 2240^{PV} STORTH OAKS JACK J7^{SV}
 LANDFALL NEW GROUND N90^{PV} BLACK ANGUS JONAH LOMU P229^{SV}
 LANDFALL ELSA L88^{PV} BLACK ANGUS DREAM L47[#]

SIRE: SJQ22T407 BLACK ANGUS TOM STEWART T407^{PV} **DAM: SJQ21S119 BLACK ANGUS KELPIE S119[#]**
 STONEY POINT POWER P114^{SV} MORDALLUP NET WORTH C170^{SV}
 STONEY POINT YANKEE QUEEN R546^{PV} BLACK ANGUS KELPIE G27[#]
 STONEY POINT YANKEE QUEEN P263^{SV} FUTURE ANGUS X48[#]

TACE	Mid December 2025 TransTasman Angus Cattle Evaluation																		
	CEDir	CEDtrs	GL	BW	200	400	600	MCW	MBC	MCH	Milk	SS	CWT	EMA	Rib	P8	RBY	IMF	DOC
EBV	+1.5	+2.6	-5.5	+4.1	+51	+91	+114	+96	+0.46	+8.6	+15	+2.6	+63	+10.5	-1.7	-2.7	+1.4	+1.3	+29
Acc	54%	47%	64%	66%	67%	65%	66%	66%	47%	46%	58%	61%	57%	56%	58%	58%	52%	60%	60%
Perc	61	59	34	54	55	56	64	60	10	41	68	33	67	12	83	86	6	76	19

Traits Observed: BWT,200WT,400WT,DOC

DOCILITY ST★R RATING



Scrotal Circumference: 37cm

KPI
156

Age: 19.5 months

Purchaser..... \$.....

"We sincerely thank our loyal clients, agents, friends and community for their continued support of Glatz Black Angus."

Ben & Samantha Glatz



Black Angus Rangeland U226 – top price of \$18,000 in Feb 2024, selling to Nicolai Farms.



Understanding Estimated Breeding Values (EBVs)

Estimated Breeding Values (EBVs) are predictions of an animal's genetic merit, based on available performance data on the individual and its relatives. EBVs are expressed in the units of measurement for each particular trait. They are shown as +ive or -ive differences from the breed base. As the breed base is set to a historical benchmark, the average EBVs of animals in each year drop has changed over time as a result of genetic change within the breed. The current breed averages are shown below. These averages provide a useful benchmark for comparing EBVs for animals.

MID-DECEMBER 2025 ANGUS BREEDPLAN


	Calving Ease		Birth		Growth				Fertility					Carcase					
	CEDir	CEDtrs	GL	BW	200	400	600	MCW	MBC	MCH	Milk	SS	CWT	EMA	RIB	P8	RBV	IMF	DOC
Brd Avg	+2.2	+2.9	-4.5	+3.9	+52	+93	+120	+102	+0.28	+8.1	+17	+2.2	+68	+6.5	+0.0	-0.3	+0.4	+2.5	+21

*Breed average represents the average EBV of all 2023 drop Australian Angus and Angus-influenced seedstock animals analysed in the Mid December 2025 Transfarn Angus Cattle Evaluation.

Calving Ease/Birth	CEDir	%	Genetic differences in the ability of a sire's calves to be born unassisted from 2 year old heifers.												Higher EBVs indicate fewer calving difficulties in 2 year old heifers.				
	CEDtrs	%	Genetic differences in the ability of a sire's daughters to calve unassisted at 2 years of age.												Higher EBVs indicate fewer calving difficulties in 2 year old heifers.				
	GL	days	Genetic differences between animals in the length of time from the date of conception to the birth of the calf.												Lower EBVs indicate shorter gestation length.				
	BW	kg	Genetic differences between animals in calf weight at birth.												Lower EBVs indicate lighter birth weight.				
Growth	200 Day	kg	Genetic differences between animals in live weight at 200 days of age due to genetics for growth.												Higher EBVs indicate heavier live weight.				
	400 Day	kg	Genetic differences between animals in live weight at 400 days of age.												Higher EBVs indicate heavier live weight.				
	600 Day	kg	Genetic differences between animals in live weight at 600 days of age.												Higher EBVs indicate heavier live weight.				
Maternal	MCH	cm	Genetic differences between animals in the height of mature females.												Higher EBVs indicate taller mature females.				
	MBC	score	Genetic differences between animals in the body condition of mature females.												Higher EBVs indicate more body condition of mature females.				
	MCW	kg	Genetic differences between animals in live weight of cows at 5 years of age.												Higher EBVs indicate heavier mature weight.				
	Milk	kg	Genetic differences between animals in live weight at 200 days of age due to the maternal contribution of its dam.												Higher EBVs indicate heavier live weight.				
Fertility	DtC	days	Genetic differences between animals in the time from the start of the joining period (i.e. when the female is introduced to a bull) until subsequent calving.												Lower EBVs indicate shorter time to calving.				
	SS	cm	Genetic differences between animals in scrotal circumference at 400 days of age.												Higher EBVs indicate larger scrotal circumference.				
Carcase	CWT	kg	Genetic differences between animals in hot standard carcase weight at 750 days of age.												Higher EBVs indicate heavier carcase weight.				
	EMA	cm ²	Genetic differences between animals in eye muscle area at the 12/13th rib site in a 400 kg carcase.												Higher EBVs indicate larger eye muscle area.				
	Rib Fat	mm	Genetic differences between animals in fat depth at the 12/13th rib site in a 400 kg carcase.												Higher EBVs indicate more fat.				
	P8 Fat	mm	Genetic differences between animals in fat depth at the P8 rump site in a 400 kg carcase.												Higher EBVs indicate more fat.				
	RBV	%	Genetic differences between animals in boned out saleable meat from a 400 kg carcase.												Higher EBVs indicate higher yield.				
	IMF	%	Genetic differences between animals in intramuscular fat (marbling) at the 12/13th rib site in a 400 kg carcase.												Higher EBVs indicate more intramuscular fat.				
Feed/Temp.	NFI-F	kg/day	Genetic differences between animals in feed intake at a standard weight and rate of weight gain when animals are in a feedlot finishing phase.												Lower EBVs indicate more feed efficiency.				
	Doc	%	Genetic differences between animals in temperament.												Higher EBVs indicate better temperament.				
Structure	Claw Set	score	Genetic differences in claw set structure (shape and evenness of claws).												Lower EBVs indicate less curl of the claw set.				
	Foot Angle	score	Genetic differences in foot angle (strength of pastern, depth of heel).												Lower EBVs indicate more heel depth.				
	Leg Angle	score	Genetic differences in rear leg structure when viewed from the side (angle at front of the hock).												Lower EBVs indicate a less angular leg angle.				
Selection Index	\$A	\$	Genetic differences between animals in net profitability per cow joined in a typical commercial self replacing herd using Angus bulls. This selection index is not specific to a particular market end-point, but identifies animals that will improve overall net profitability in the majority of commercial, self replacing, grass and grain finishing beef production systems.												Higher selection indexes indicate greater profitability.				
	\$A-L	\$	The \$A-L index is similar to the \$A index but is modelled on a production system where feed is surplus to requirements for the majority of the year, or the cost of supplying additional feed when animal feed requirements increase is low. While the \$A aims to maintain mature cow weight, the \$A-L does not aim to limit the increase in mature cow weight as there is minimal cost incurred if the feed maintenance requirements of the female breeding herd increase as a result of selection decisions.												Higher selection indexes indicate greater profitability.				

EBV Quick Reference Glatz Black Angus Sale 2026



Animal Ident		Calving Ease/Birth				Growth				Fertility			Carcass			Temp.				
		CEDir	CEDirs	GL	BWT	200	400	600	MCW	MBC	MCH	Milk	SS	CWT	EMA	RIB	P8	RBY	IMF	Doc
1	SJQ24V386	+1.4	+0.0	-4.8	+5.4	+58	+98	+133	+101	+0.37	+8.0	+22	+2.9	+87	+9.2	+0.3	-0.1	+1.1	+0.8	+19
2	SJQ24V325	+2.6	+1.9	-5.4	+6.0	+65	+115	+155	+156	+0.41	+8.3	+15	+2.1	+90	+9.7	-2.0	-3.0	+1.5	-0.1	+19
3	SJQ24V305	+0.5	+2.2	-5.8	+5.0	+53	+101	+136	+126	+0.33	+9.4	+16	+2.9	+77	+2.0	-0.9	+0.7	+0.1	+1.6	+24
4	SJQ24V295	-8.5	-7.3	-1.6	+7.3	+53	+92	+119	+112	+0.25	+7.6	+12	+2.3	+74	+6.5	-1.0	+0.0	+1.6	-0.4	+32
5	SJQ24V70	+2.8	+1.7	-3.8	+4.6	+59	+105	+130	+101	+0.24	+7.4	+14	+3.1	+76	+5.8	-1.5	-2.8	+0.6	+1.5	+38
6	SJQ24V28	+4.3	+0.2	-5.1	+5.6	+51	+89	+115	+113	+0.33	+6.4	+18	+1.0	+63	+6.7	-1.4	-4.5	+1.9	-1.5	+9
7	SJQ24V23	+3.5	+5.5	-4.8	+4.4	+53	+93	+120	+117	+0.33	+7.2	+16	+3.2	+65	+4.7	+0.4	-0.7	+0.9	+0.9	+22
8	SJQ24V38	+3.3	+1.6	-3.9	+4.2	+62	+106	+138	+118	+0.29	+8.9	+16	+3.9	+79	+5.6	-1.3	-2.4	+0.6	+0.4	+39
9	SJQ24V263	+1.6	+4.2	-5.2	+4.5	+63	+111	+139	+118	+0.34	+8.3	+19	+1.0	+86	+9.1	+0.4	+0.3	+0.4	+1.9	+10
10	SJQ24V284	-2.6	+6.1	-4.4	+8.3	+67	+112	+145	+117	+0.08	+7.2	+22	+1.7	+90	+10.6	-1.8	-3.6	+1.6	-0.3	+7
11	SJQ24V278	-5.1	-0.1	-2.7	+5.3	+61	+104	+137	+119	+0.31	+9.1	+18	+3.7	+88	+5.9	+0.6	+1.7	+0.1	+1.0	+37
12	SJQ24V300	-9.9	+3.5	-1.3	+6.9	+64	+109	+146	+109	+0.29	+8.3	+21	+1.8	+104	+6.8	+1.8	+3.3	-0.2	+1.4	+33
13	SJQ24V277	+3.1	+4.2	-4.6	+3.2	+46	+83	+110	+83	+0.22	+9.0	+22	+2.7	+67	+4.9	+0.0	+1.3	+0.2	+3.4	+20
14	SJQ24V344	-3.2	+0.9	-2.3	+7.5	+64	+107	+143	+139	+0.25	+7.9	+14	+2.2	+83	+7.4	-1.5	-3.1	+1.6	-0.1	+22
15	SJQ24V273	-1.0	-0.1	-2.4	+5.2	+52	+94	+124	+130	+0.38	+9.9	+10	+1.6	+76	+4.9	-2.8	-4.6	+1.4	+2.9	+30
16	SJQ24V313	-0.1	+5.0	-4.2	+3.9	+53	+94	+128	+111	+0.31	+9.4	+22	+3.2	+80	+2.3	+0.2	+1.1	+0.1	+2.4	+29
17	SJQ24V42	+1.2	+3.3	-7.8	+4.6	+59	+99	+121	+93	+0.22	+8.6	+16	+1.0	+67	+7.5	-1.8	-1.6	+0.2	+2.2	+21
18	SJQ24V25	+2.8	+2.3	-5.4	+4.2	+48	+91	+124	+110	+0.36	+9.2	+19	+2.7	+65	+4.7	+0.3	+0.6	+0.2	+2.3	+20
19	SJQ24V101	-1.3	+2.3	-7.6	+6.2	+64	+106	+127	+104	+0.15	+8.1	+9	+2.6	+72	+7.2	-1.7	-2.7	+0.7	+1.5	+13
20	SJQ24V52	-1.4	-1.6	-2.8	+5.7	+56	+90	+112	+107	+0.27	+7.4	+13	+2.7	+62	+4.3	-1.7	-3.3	+0.7	+1.4	+33
21	SJQ24V349	+4.1	+1.6	-1.7	+3.7	+57	+100	+136	+91	+0.20	+8.3	+27	+2.9	+87	+7.2	-0.5	+0.8	+0.2	+2.4	+29
22	SJQ24V310	+4.3	+6.3	-6.1	+2.7	+56	+99	+120	+106	+0.37	+8.3	+18	+1.8	+79	+6.3	-0.8	-1.5	+0.6	+1.6	+27
23	SJQ24V266	+1.2	+4.9	-5.6	+4.7	+60	+102	+127	+118	+0.35	+8.7	+17	+1.1	+82	+6.4	-0.1	+0.0	+0.6	+0.8	+24
24	SJQ24V258	-3.4	+2.0	-3.3	+7.0	+60	+101	+130	+127	+0.28	+7.9	+14	+2.0	+78	+7.1	-1.5	-3.3	+1.7	-0.1	+25
25	SJQ24V242	+1.2	+3.3	-4.2	+4.2	+47	+90	+117	+108	+0.39	+8.9	+18	+2.5	+63	+4.3	+0.0	+0.4	+0.0	+3.0	+18
26	SJQ24V332	+3.5	+6.2	-6.7	+5.0	+57	+102	+135	+124	+0.21	+7.7	+18	+1.6	+80	+2.0	+0.8	+0.3	+0.0	+0.9	+17
27	SJQ24V29	-6.0	+3.8	+0.8	+6.3	+54	+97	+130	+99	+0.23	+10.2	+16	+3.0	+85	+1.6	-0.6	+1.8	+0.2	+0.9	+29
28	SJQ24V89	+1.4	+2.2	-7.2	+2.9	+50	+94	+108	+81	+0.36	+7.2	+16	+1.9	+61	+13.2	+1.3	+1.9	+1.2	+0.8	+35
29	SJQ24V268	-1.6	-3.3	-3.6	+7.2	+55	+92	+122	+96	+0.13	+7.5	+22	+2.8	+84	+8.8	-1.2	-2.2	+1.5	+1.6	+25
30	SJQ24V218	+3.8	+3.1	-5.3	+5.2	+62	+102	+137	+121	+0.19	+5.9	+18	+3.0	+83	+7.0	-1.5	-3.5	+1.4	+0.3	+30
31	SJQ24V39	+1.1	+3.2	-6.6	+4.0	+57	+96	+117	+85	+0.17	+6.6	+14	+2.0	+67	+7.9	-1.4	-2.0	+0.5	+1.5	+18
32	SJQ24V368	+6.2	+5.9	-8.4	+4.8	+63	+110	+138	+127	+0.11	+10.5	+14	+3.6	+85	-2.1	-4.0	-6.4	+0.9	-1.3	+13
33	SJQ24V298	-8.8	-0.5	-0.9	+6.7	+62	+109	+141	+122	+0.31	+9.6	+16	+3.4	+85	+11.4	+0.0	+0.1	+0.9	+0.6	+29
34	SJQ24V382	-1.6	-1.1	-5.6	+5.6	+54	+94	+120	+125	+0.32	+7.5	+13	+4.0	+52	+10.0	-2.1	-1.1	+1.8	+1.1	+35
35	SJQ24V388	-2.3	-7.7	-2.0	+6.1	+53	+91	+127	+95	+0.28	+6.9	+23	+2.3	+82	+4.5	+3.0	+3.7	+0.0	+1.6	+16
36	SJQ24V396	+6.7	+7.0	-6.8	+2.7	+54	+100	+128	+109	+0.19	+7.8	+20	+2.8	+79	+3.2	-0.5	-0.9	+0.2	+1.8	+37
37	SJQ24V286	-8.1	+2.7	-2.5	+6.2	+55	+96	+126	+106	+0.13	+8.9	+16	+3.1	+84	+3.2	-1.4	-0.2	+0.2	+2.5	+15
38	SJQ24V293	+4.1	+4.9	-8.7	+3.9	+58	+101	+124	+120	+0.36	+8.9	+14	+0.8	+78	+2.6	-1.9	-2.6	+0.0	+2.3	+24
39	SJQ24V311	-6.3	-3.0	-3.0	+6.7	+62	+102	+144	+126	+0.27	+10.3	+18	+4.3	+89	+4.6	-2.4	-1.5	+0.6	+2.1	+13
TACE 		CEDir	CEDirs	GL	BWT	200	400	600	MCW	MBC	MCH	Milk	SS	CWT	EMA	RIB	P8	RBY	IMF	Doc
		+2.2	+2.9	-4.5	+3.9	+52	+93	+120	+102	+0.28	+8.1	+17	+2.2	+68	+6.5	+0.0	-0.3	+0.4	+2.5	+21
		Translating Angus Cattle Evaluation																		

EBV Quick Reference Glatz Black Angus Sale 2026



Animal Ident		Calving Ease/Birth				Growth				Fertility				Carcass				Temp.			
		CEDir	CEDirs	GL	BWT	200	400	600	MCW	MBC	MCH	Milk	SS	CWT	EMA	RIB	P8			RBY	IMF
40	SJQ24V248	+4.4	+4.2	-6.6	+3.8	+44	+81	+110	+105	+0.14	+7.0	+18	+1.4	+63	+5.5	+0.2	-1.2	+0.9	+1.1	+23	122
41	SJQ24V290	-8.6	-1.1	-1.8	+6.1	+57	+101	+137	+117	+0.26	+7.6	+19	+3.3	+85	+6.6	+1.2	+2.5	+0.3	+0.7	+26	178
42	SJQ24V377	-1.8	+3.8	-2.4	+4.2	+58	+100	+126	+120	+0.32	+8.7	+17	+0.1	+74	+7.0	-2.1	-2.3	+1.1	+1.9	+23	133
43	SJQ24V289	+6.3	+8.0	-3.8	+3.0	+55	+96	+126	+118	+0.14	+8.2	+19	+1.9	+75	+4.8	-1.2	-5.0	+1.6	-0.2	+26	171
44	SJQ24V226	+2.1	+2.9	-7.6	+4.7	+54	+102	+134	+119	+0.34	+9.1	+19	+2.4	+71	+4.2	+1.2	+2.4	-0.5	+2.6	+21	176
45	SJQ24V372	-0.2	+0.7	-3.5	+5.4	+66	+110	+142	+128	+0.23	+8.3	+20	+3.2	+80	+5.7	-3.1	-4.4	+0.9	+1.7	+8	149
46	SJQ24V326	+1.5	+3.8	-3.9	+4.2	+47	+88	+107	+105	+0.31	+6.6	+15	+1.9	+58	+6.7	+0.3	-0.9	+1.1	+1.3	+28	137
47	SJQ24V324	-0.3	+0.4	-6.8	+6.6	+56	+95	+117	+127	+0.29	+6.8	+11	+1.7	+69	+4.9	-1.8	-5.8	+1.2	+1.6	+32	131
48	SJQ24V407	+3.7	+1.1	-6.8	+3.4	+53	+93	+117	+103	+0.30	+7.6	+19	+3.6	+63	+2.3	-0.3	-0.1	+0.1	+2.6	+27	160
49	SJQ24V404	+3.4	+5.1	-5.6	+5.4	+59	+103	+136	+129	+0.24	+8.3	+19	+3.8	+77	+5.2	-0.6	-1.8	+0.9	+0.6	+27	192
50	SJQ24V308	+3.7	+5.1	-7.4	+4.5	+53	+86	+110	+97	+0.14	+7.7	+15	+1.1	+66	+4.2	-0.7	-3.7	+1.0	+1.0	+13	92
51	SJQ24V336	-3.7	-3.1	+0.0	+4.1	+46	+100	+128	+93	+0.40	+7.6	+21	+2.9	+67	+8.7	+0.3	+2.0	+0.2	+3.2	+43	191
52	SJQ24V409	-6.8	+1.9	-2.3	+7.0	+57	+105	+136	+144	+0.48	+10.3	+14	+3.9	+73	+5.2	-1.2	-1.4	+1.1	+0.5	+15	147
53	SJQ24V114	+0.6	+1.1	-4.6	+4.0	+49	+92	+107	+90	+0.40	+8.3	+11	+2.4	+56	+11.3	-0.8	-1.3	+1.4	+1.1	+40	161
54	SJQ24V318	-6.0	-0.5	-3.7	+6.6	+58	+103	+137	+124	+0.29	+9.7	+16	+3.0	+81	+8.8	-0.9	-1.5	+0.7	+0.9	+33	181
55	SJQ24V262	+4.5	+4.1	-3.7	+3.5	+53	+94	+118	+95	+0.16	+6.0	+20	+1.7	+72	+6.8	-0.2	-1.2	+1.0	+0.8	+19	151
56	SJQ24V34	-1.6	-2.2	-5.6	+5.6	+58	+102	+133	+111	+0.37	+8.3	+16	+2.9	+75	+10.8	-1.1	-1.0	+1.3	+0.2	+25	178
57	SJQ24V83	+6.9	+4.9	-0.8	+2.8	+57	+95	+112	+113	+0.24	+8.8	+12	+3.6	+60	+6.6	-1.3	-3.4	+1.1	+0.8	+31	190
58	SJQ24V390	+4.0	+6.8	-5.3	+3.9	+51	+87	+110	+103	+0.18	+7.2	+17	+2.5	+68	+2.1	-1.3	-1.5	+0.3	+1.3	+17	111
59	SJQ24V259	-3.4	+2.0	-3.2	+6.4	+56	+94	+117	+113	+0.28	+7.9	+14	+1.9	+70	+6.8	-1.5	-3.4	+1.6	+0.4	+21	117
60	SJQ24V395	+3.3	+3.2	-5.2	+2.8	+44	+80	+95	+81	+0.16	+8.6	+17	+2.3	+58	+4.1	-0.1	+0.0	+0.7	+0.9	+16	102
61	SJQ24V392	-3.9	+3.0	-2.6	+4.3	+60	+95	+118	+95	+0.24	+7.7	+18	+2.0	+70	+5.8	-2.0	-2.3	+0.5	+3.3	+23	123
62	SJQ24V50	+1.4	-1.0	-4.6	+4.6	+59	+101	+126	+103	+0.21	+6.1	+15	+2.8	+74	+6.9	-0.4	-0.8	+0.5	+1.2	+26	180
63	SJQ24V93	+1.9	+3.3	-6.2	+3.7	+52	+94	+116	+103	+0.45	+9.4	+16	+2.2	+67	+9.6	+0.5	-0.1	+1.3	+0.6	+31	176
64	SJQ24V233	+3.1	+4.4	-4.4	+4.9	+54	+88	+109	+95	+0.20	+7.3	+16	+1.7	+67	+6.3	+1.0	-0.8	+1.1	+0.5	+28	143
65	SJQ24V18	-1.3	+0.2	-2.4	+4.7	+57	+101	+135	+118	+0.11	+8.5	+24	+2.2	+83	+3.0	-2.1	-1.3	+0.2	+1.6	+18	132
66	SJQ24V111	-1.3	-2.0	-5.7	+4.7	+52	+92	+115	+92	+0.34	+8.2	+15	+2.6	+64	+10.5	-0.6	-0.3	+1.2	+0.3	+25	148
67	SJQ24V107	+1.5	+2.6	-5.5	+4.1	+51	+91	+114	+96	+0.46	+8.6	+15	+2.6	+63	+10.5	-1.7	-2.7	+1.4	+1.3	+29	156



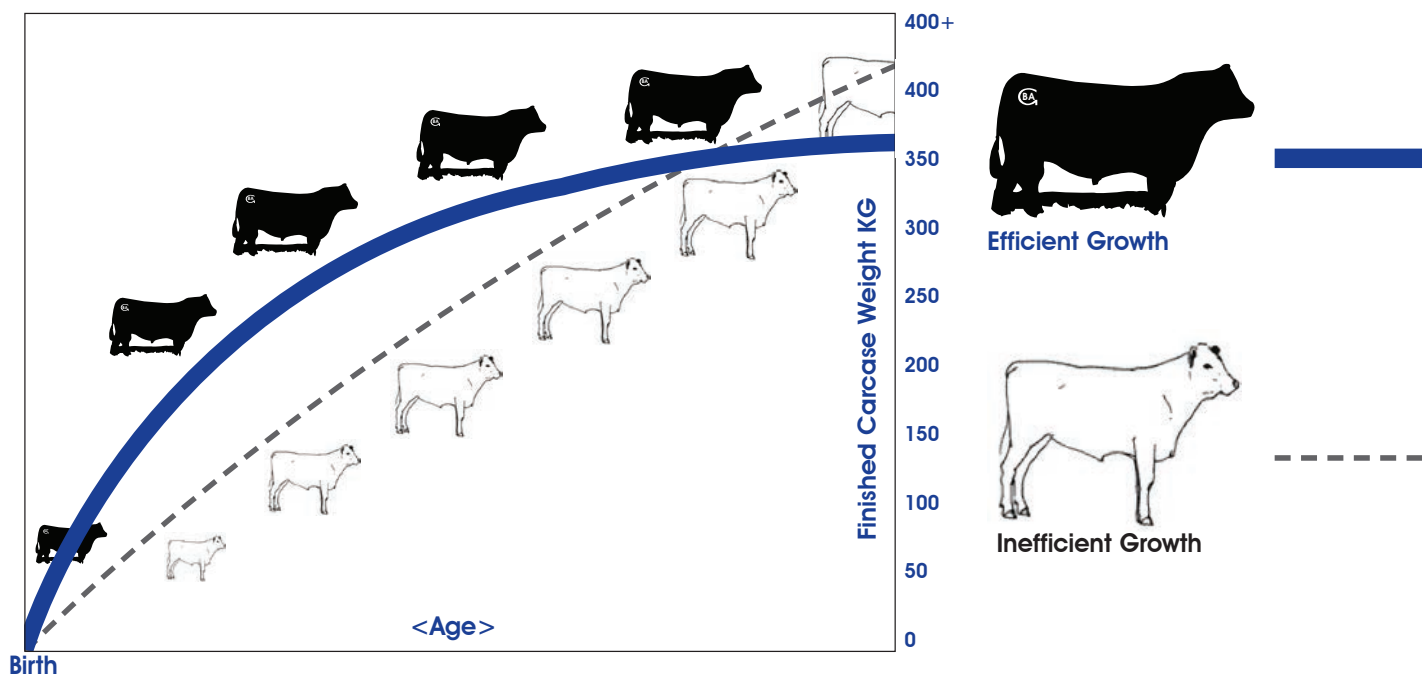
TransGen Angus Cattle Company

Top 20%

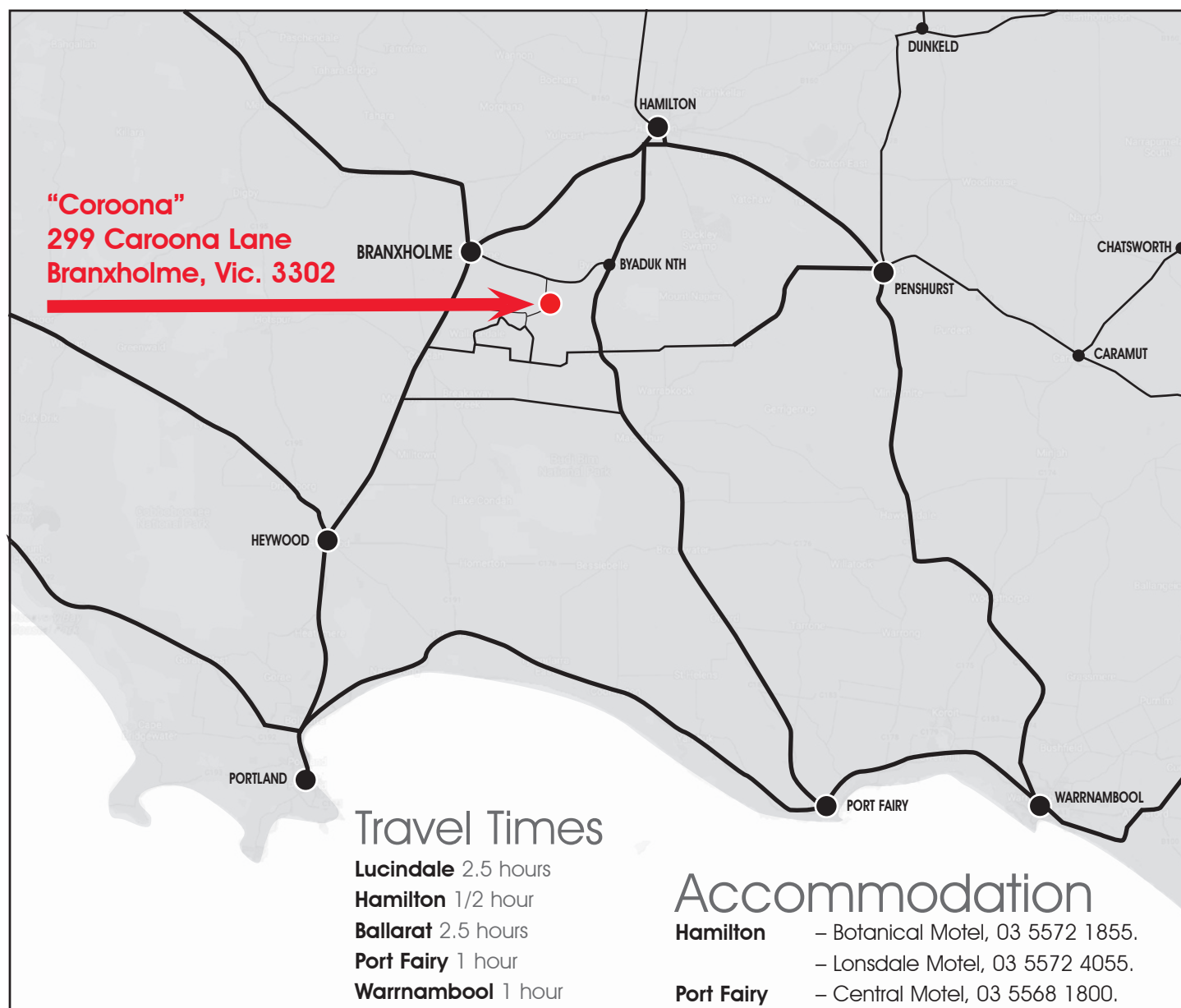
Top 50%



Glatz Black Angus



The most efficient form of growth — Dimension + Maturity Pattern + Function





Buyers Instruction Slip

PURCHASER DETAILS

Name: T/A:

Mailing Address: Postcode:

Email: UHF:

Telephone: Mobile:

PIC: Angus Herd ID: Signature:

DELIVERY INSTRUCTIONS

Lots Purchased:

Insurance: Y N Type of Cover:

Property Directions / Roadside Address:

.....

.....

Map No.: Map Reference:

Special Instructions:

.....

.....

ACCOUNT SETTLEMENT

The name and signature of your agent is required.

Agent:

Agent Telephone: Signature:



Black Angus **Wattle Street Q127**

"Black Angus Wattle Street Q127 is a Proper Beef Bull. Super Sound, Super Docile, Super Thick and Heavy. His first progeny averaged \$24,250 in the 2023 GBA sale. Wattle Street is breed elite for Docility, Foot Scores and Growth."

All in the one brand...

* Problem Free Bulls * Proven Performance * Proven Carcase Quality

